

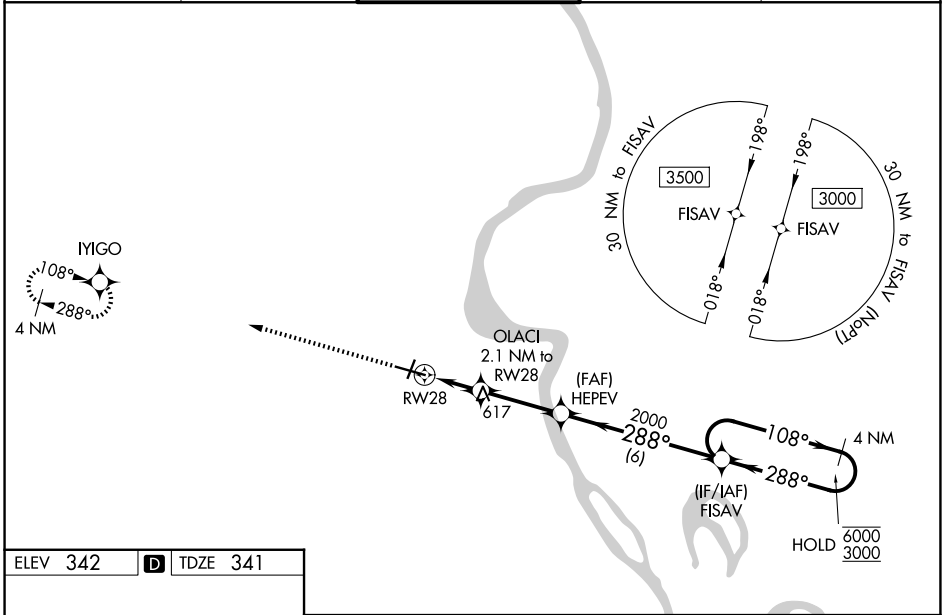
| | | |
|--|------------------------|---|
| WAAS CH 90199 W28A | APP CRS 288° | Rwy Ldg TDZE 341 Apt Elev 342 |
|--|------------------------|---|

RNAV (GPS) RWY 28

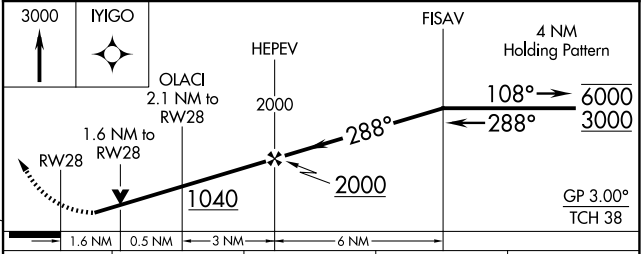
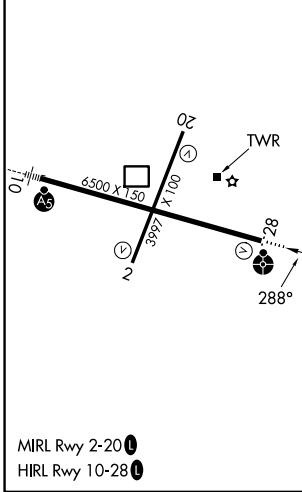
CAPE GIRARDEAU RGNL (CGI)

| | | |
|---|--|---|
| RNP APCH - GPS. | | MISSED APPROACH: Climb to 3000 direct IYIGO and hold, continue climb-in-hold to 3000. |
| For uncompensated Baro-VNAV systems, LNAV/VNAV NA below -14°C or above 54°C. Baro-VNAV and VDP NA when using CIR altimeter setting. Rwy 28 helicopter visibility reduction below 3/4 SM NA. Inop table does not apply to LNAV/VNAV all Cats and LNAV Cats A and B. For inop ALS, increase LPV Cat A and B visibility to 1 1/8 SM. When local altimeter setting not received, use CIR altimeter setting and increase LPV DA to 771 feet and all visibilities 1/8 SM. Increase LNAV/VNAV DA to 896 feet; increase all MDAs 60 feet and LNAV and Circling visibility Cat C/D 1/4 SM. | | |

| | | | | |
|-----------------------|--|---|-------------------------|-------------------------|
| ASOS 120.55 | MEMPHIS CENTER 133.65 292.15 | CAPE GIRARDEAU TOWER * 125.525 (CTAF) | GND CON 124.7 | UNICOM 122.95 |
|-----------------------|--|---|-------------------------|-------------------------|



| | | |
|----------|----------|----------|
| ELEV 342 | D | TDZE 341 |
|----------|----------|----------|



| CATEGORY | A | B | C | D |
|--------------|-----------------------|----------------------|-------------------------------|-------------------------------|
| LPV DA | 723-1 382 (400-1) | | | |
| LNAV/VNAV DA | 848-1 507 (600-1 3/8) | | | |
| LNAV MDA | 880-1 | 539 (600-1) | 880-1 3/8 | 539 (600-1 3/8) |
| CIRCLING | 880-1 538 (600-1) | 960-1 618 (700-1) | 1000-1 3/4 658 (700-1 3/4) | 1080-2 1/4 738 (800-2 1/4) |

NC-3, 11 JUN 2026 to 09 JUL 2026

NC-3, 11 JUN 2026 to 09 JUL 2026