

WAAS CH 72801 W12A	APP CRS 128°	Rwy Ldg TDZE Apt Elev	8399 873 873
--	------------------------	-----------------------------	---

RNAV (GPS) RWY 12

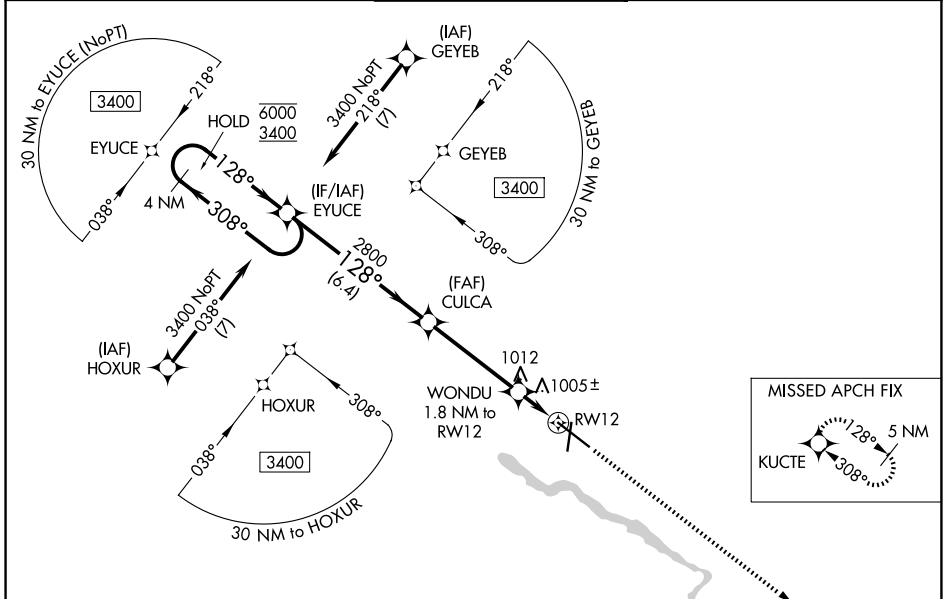
WATERLOO RGNL (A.L.O)

RNP APCH.

⚠ For uncompensated Baro-VNAV systems, LNAV/VNAV NA below -19°C or above 54°C. For inop ALS, increase LNAV/VNAV all Cats to RVR 5500.
RVR 1800 authorized with use of FD or AP or HUD to DA.

MALSR MISSED APPROACH: Climb to 3400 direct KUCTE and hold.

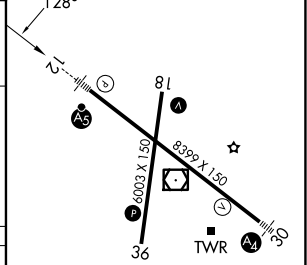
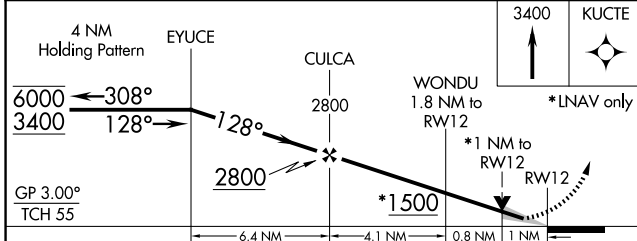
ATIS 120.65	DES MOINES APP CON ★ 118.9 251.15	WATERLOO TOWER ★ 125.075 (CTAF) 257.8	GND CON 121.9 269.1	UNICOM 122.95
-----------------------	---	---	-------------------------------	-------------------------



NC-3, 11 JUN 2026 to 09 JUL 2026

NC-3, 11 JUN 2026 to 09 JUL 2026

ELEV 873	D TDZE 873
----------	-------------------



CATEGORY	A	B	C	D
LPV DA#	1073/24 200 (200-½)			
LNAV/VNAV DA	1252/30 379 (400-¾)			
LNAV MDA	1260/24 387 (400-½)	1260/35 387 (400-¾)		
CIRCLING	1360-1 487 (500-1)	1400-1 527 (600-1)	1480-1¾ 607 (700-1¾)	1600-2¼ 727 (800-2¼)

HIRL Rwy 12-30
MIRL Rwy 18-36
REIL Rwy 18 and 36