

VOR/DME ALO 112.2 Chan 59	APP CRS 176°	Rwy Ldg TDZE Apt Elev	6003 871 873
---	------------------------	-----------------------------	---

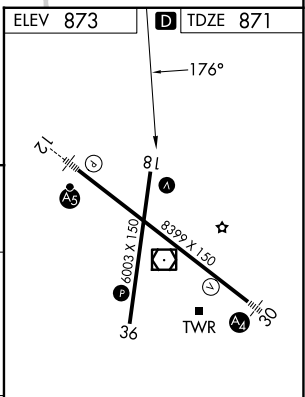
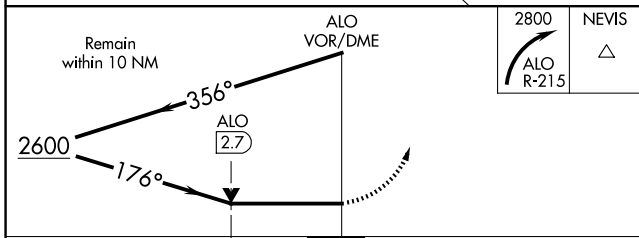
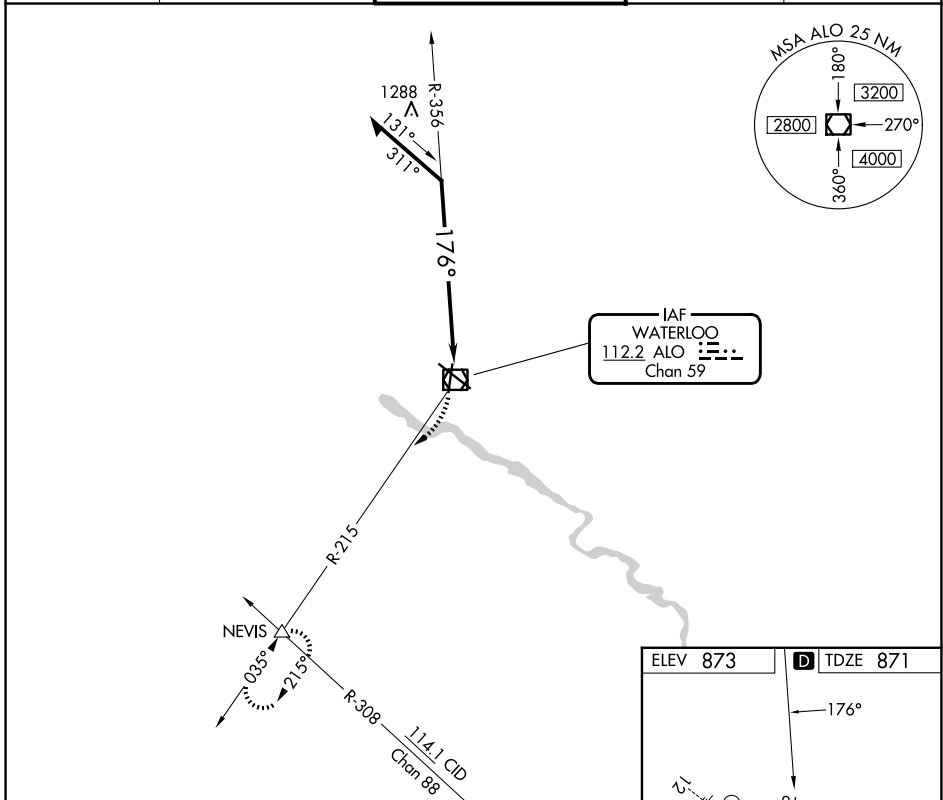
VOR RWY 18

WATERLOO RGNL (A.L.O)

⚠ Rwy 18 helicopter visibility reduction below $\frac{3}{4}$ SM NA.

⚠ MISSED APPROACH: Climbing right turn to 2800 on ALO VOR/DME R-215 to NEVIS INT and hold.

ATIS 120.65	DES MOINES APP CON * 118.9 251.15	WATERLOO TOWER * 125.075 (CTAF) 257.8	GND CON 121.9 269.1	UNICOM 122.95
-----------------------	---	---	-------------------------------	-------------------------



CATEGORY	A	B	C	D
S-18	1600-1 729 (800-1)		1600-2 729 (800-2)	
CIRCLING	1600-1 727 (800-1)		1600-2 727 (800-2)	1600-2 1/4 727 (800-2 1/4)

ELEV 873 TDZE 871

HIRL Rwy 12-30
MIRL Rwy 18-36
REIL Rwys 18 and 36

NC-3, 11 JUN 2026 to 09 JUL 2026

NC-3, 11 JUN 2026 to 09 JUL 2026