

EASTOVER, SOUTH CAROLINA

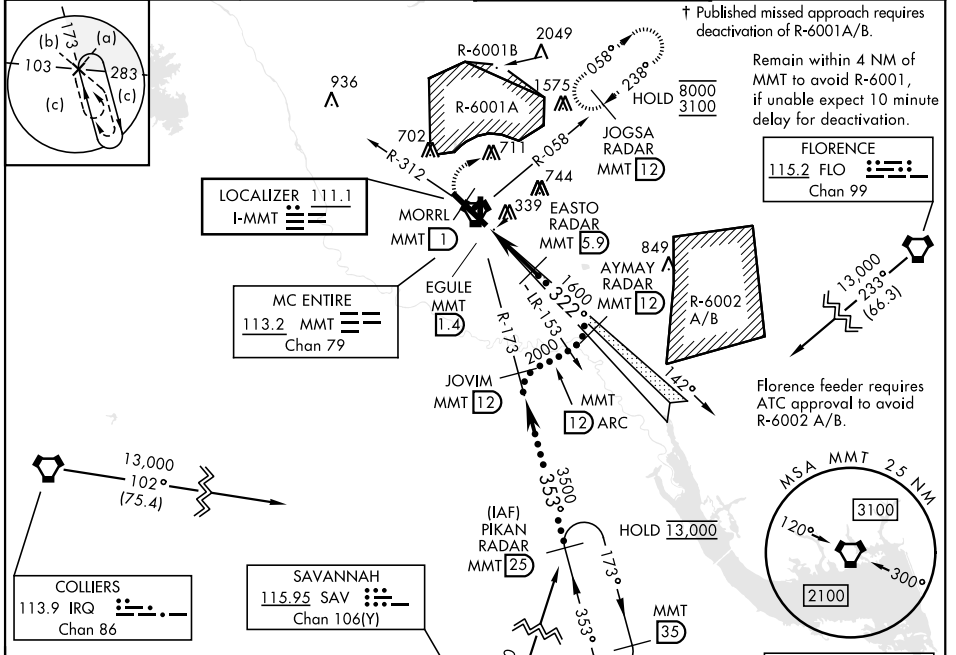
HI-ILS or LOC/DME RWY 32

LOC I-MMT 111.1	APCH CRS 322°	Rwy ldg TDZE Arprt Elev 9012 243 254	[USAF]	MC ENTIRE JNGB (KMMT)
---------------------------	-------------------------	--	--------	-----------------------

▼ *When ALS inop, increase CAT CDE RVR to 40, vis to 3/4 mile.
 **When ALS inop, increase CAT C RVR to 55, vis to 1 mile.

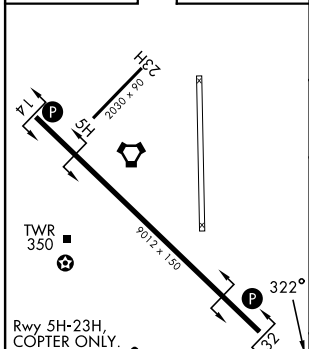
† MISSED APPROACH: Climb to 1100 direct MORRL/
 1 DME then climbing right turn to 3100 intercept
 MMT R-058 direct JOGSA/12 DME and hold.

ATIS ★ 327.05	SHAW APP CON 125.4 318.1	TOWER★ 132.4 (CTAF) 0 253.5	GND CON 127.625 226.675
-------------------------	------------------------------------	---------------------------------------	-----------------------------------



EMERG SAFE ALT 100 NM 3800

ELEV	254	TDZE	243
------	-----	------	-----



CATEGORY		C	D	E
S-ILS 32 *		443/24	200 (200-1/2)	
S-LOC 32 **		620/35	377 (400-5/8)	
CIRCLING		880-1 3/4 626 (700-1 3/4)	940-2 1/4 686 (700-2 1/4)	1020-2 3/4 766 (800-2 3/4)

EASTOVER, SOUTH CAROLINA 33° 55' N-80° 48' W MC ENTIRE JNGB (KMMT)

Amdt 4 25MAY17

HI-ILS or LOC/DME RWY 32

SE-2, 11 JUN 2026 to 09 JUL 2026

SE-2, 11 JUN 2026 to 09 JUL 2026