

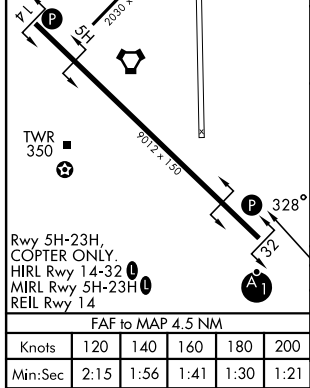
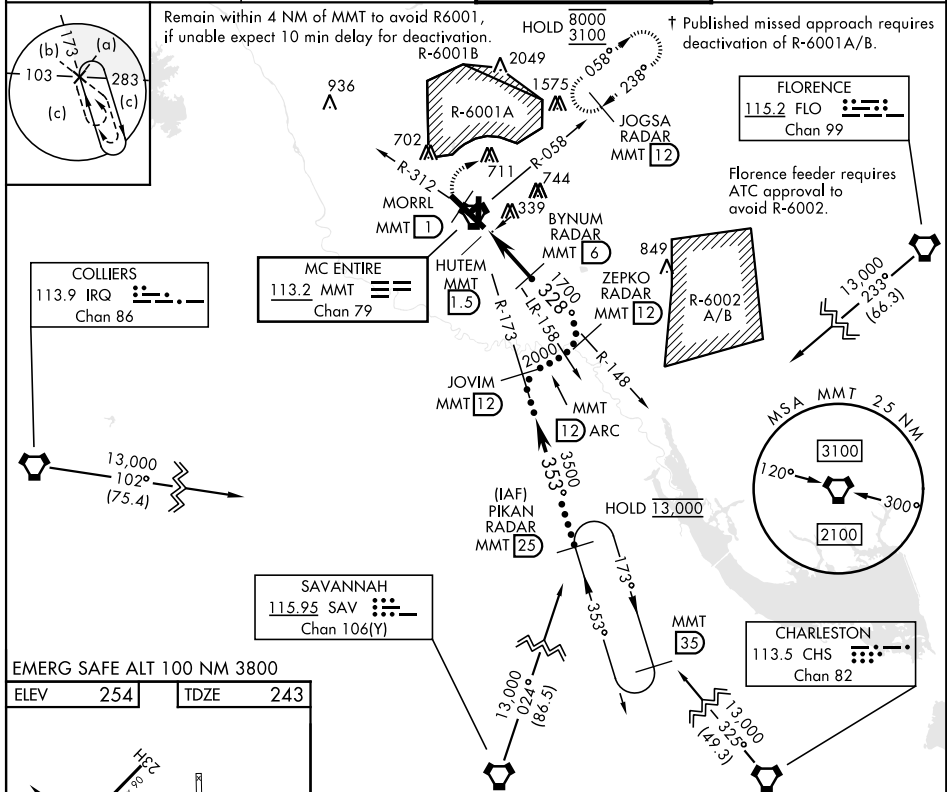
EASTOVER, SOUTH CAROLINA

HI-TACAN RWY 32

VORTAC MMT 113.2 Chan 79	APCH CRS 328°	Rwy ldg TDZE 243 Arprt Elev 254	[USAF]	MC ENTIRE JNGB (KMMT)
--	-------------------------	---	--------	-----------------------

† MISSED APPROACH: Climb to 1100 direct MORRL/1 DME then climbing right turn to 3100 intercept MMT R-058 direct JOGSA/12 DME and hold.

ATIS ★ 327.05	SHAW APP CON 125.4 318.1	TOWER ★ 132.4 (CTAF) 253.5	GND CON 127.625 226.675
-------------------------	------------------------------------	--------------------------------------	-----------------------------------



1100 MORRL MMT 1.5	3100 MMT R-058	JOGSA MMT 12	ZEPKO RADAR MMT 12
MMT VORTAC	HUTEM MMT 1.5	MMT 2.3	BYNUM RADAR MMT 6
CATEGORY		C	D
S-32 *		640/40	397 (400-¾)
CIRCLING		880-1¾ 626 (700-1¾)	1020-2¾ 766 (800-2¾)

EASTOVER, SOUTH CAROLINA 33°55'N-80°48'W MC ENTIRE JNGB (KMMT)

HI-TACAN RWY 32

SE-2, 11 JUN 2026 to 09 JUL 2026

SE-2, 11 JUN 2026 to 09 JUL 2026

