

EASTOVER, SOUTH CAROLINA

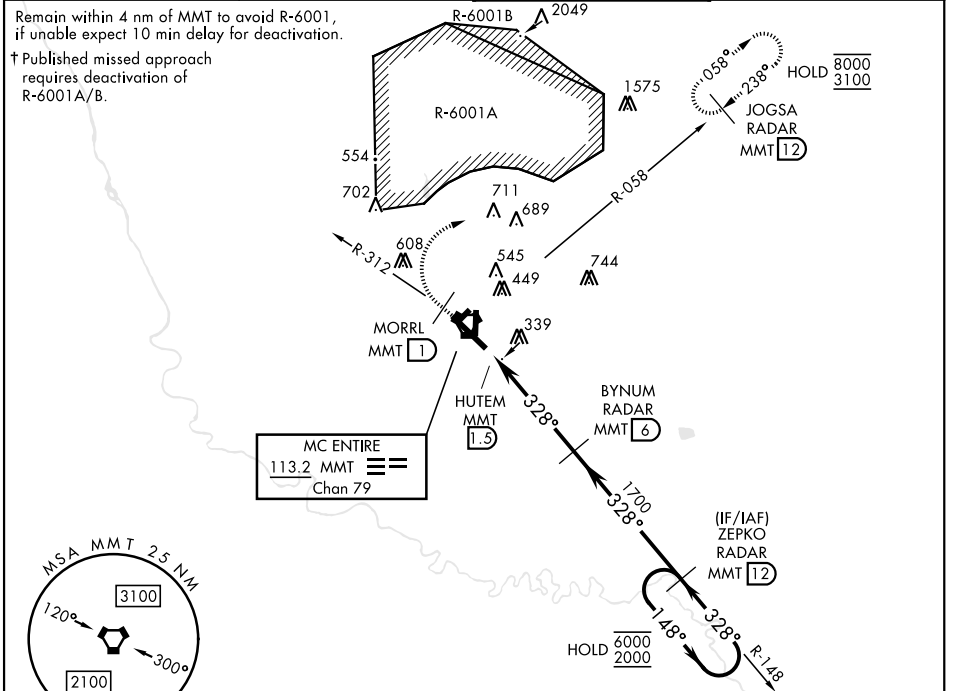
TACAN RWY 32

VORTAC MMT 113.2 Chan 79	APCH CRS 328°	Rwy Idg TDZE 243 Arpt Elev 254	[USAF]	MC ENTIRE JNGB (KMMT)
--	-------------------------	--	--------	-----------------------

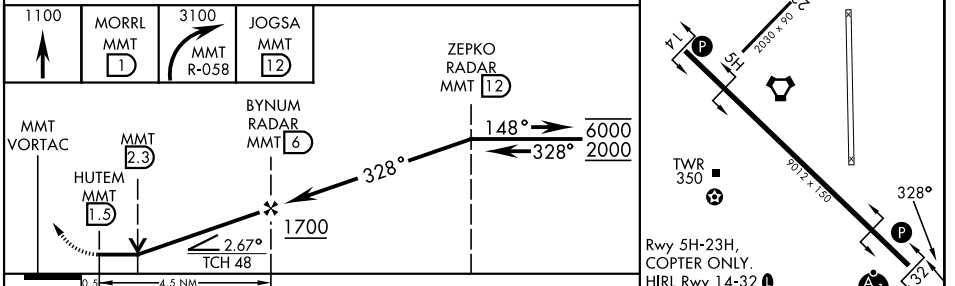
⚠ * When ALS inop, increase CAT AB RVR to 55, vis to 1 mile, CAT CDE RVR to 60, vis to 1½ miles.

⚠ MISSED APPROACH: Climb to 1100 direct MORRL/1 DME then climbing right turn to 3100 intercept MMT R-058 direct JOGSA/12 DME and hold.

ATIS ★ 327.05	SHAW APP CON 125.4 318.1	TOWER ★ 132.4 (CTAF) 253.5	GND CON 127.625 226.675
-------------------------	------------------------------------	--------------------------------------	-----------------------------------



ELEV 254	TDZE 243
----------	----------



CATEGORY	A	B	C	D	E
S-32 *	640/24 397 (400-½)		640/40 397 (400-¾)		
CIRCLING	740-1 486 (500-1)	840-1 586 (600-1)	880-1¼ 626 (700-1¾)	940-2¼ 686 (700-2¼)	1020-2¾ 766 (800-2¾)

FAF to MAP 4.5 NM					
Knots	60	90	120	150	180
Min:Sec	4:30	3:00	2:15	1:48	1:30

EASTOVER, SOUTH CAROLINA 33°55'N-80°48'W MC ENTIRE JNGB (KMMT)

Amtd 4 25MAY17

TACAN RWY 32

SE-2, 11 JUN 2026 to 09 JUL 2026

SE-2, 11 JUN 2026 to 09 JUL 2026