

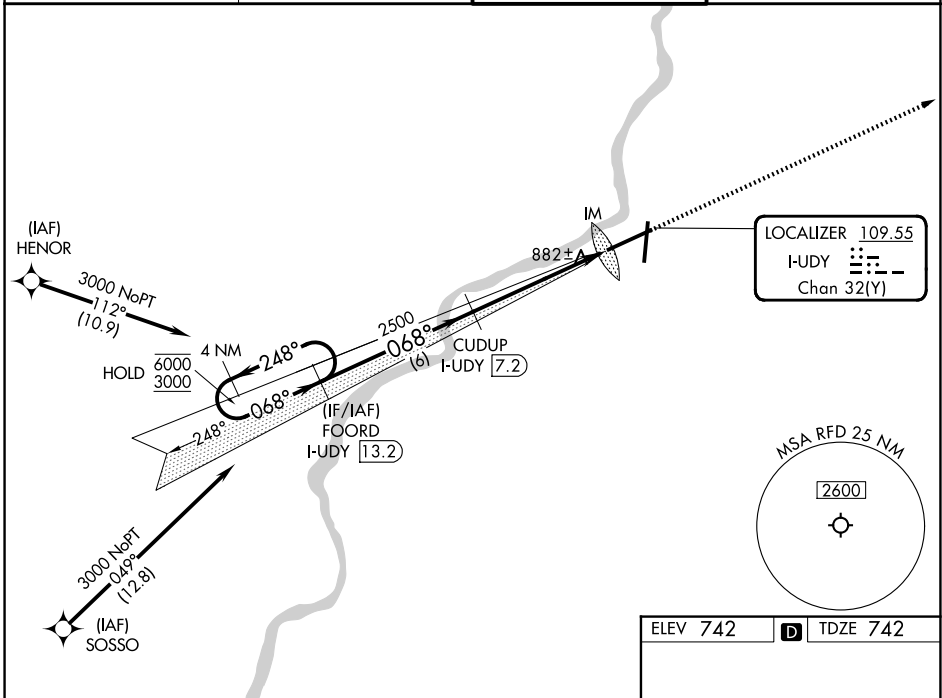
LOC/DME I-UDY 109.55 Chan 32 (Y)	APP CRS 068°	Rwy Ldg 10002 TDZE 742 Apt Elev 742
--	------------------------	--

ILS RWY 7 (CAT II & III)

CHICAGO/ROCKFORD INTL (RFD)

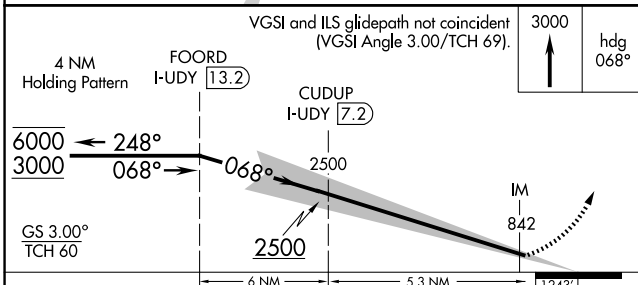
RNP APCH - GPS. From HENOR or SOSSO. RADAR required.	ALSF-2 	MISSED APPROACH: Climb to 3000 on heading 068°. Expect RADAR vectors. (RADAR required).
ASR CAT II: RVR 1000 authorized with specific OPSPEC, MSPEC, or LOA approval and use of autoland or HUD to touchdown.		

ATIS 127.6	ROCKFORD APP CON 121.0 327.0	ROCKFORD TOWER 118.1 290.375	GND CON 121.9 290.375
----------------------	--	--	---------------------------------

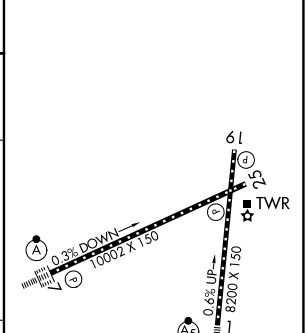


EC-3, 11 JUN 2026 to 09 JUL 2026

EC-3, 11 JUN 2026 to 09 JUL 2026



ELEV 742	D TDZE 742
----------	-------------------



CATEGORY	A	B	C	D
S-ILS 7	CAT II RA 114/12 100 DA 842			
S-ILS 7	CAT III RVR 06			

CATEGORY II & III ILS - SPECIAL AIRCREW & AIRCRAFT CERTIFICATION REQUIRED

REIL Rws 19 and 25
HIRL Rws 1-19 and 7-25
TDZ/CL Rws 1 and 7