

LOC/DME I-UDY 109.55 Chan 32 (Y)	APP CRS 068°	Rwy Ldg 10002 TDZE 742 Apt Elev 742
--	------------------------	--

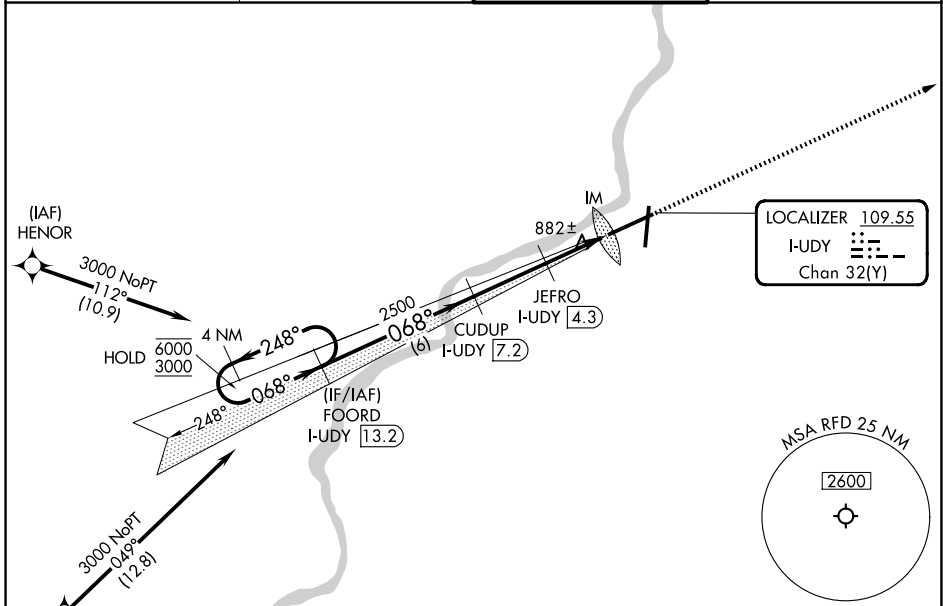
ILS or LOC RWY 7

CHICAGO/ROCKFORD INTL (RFD)

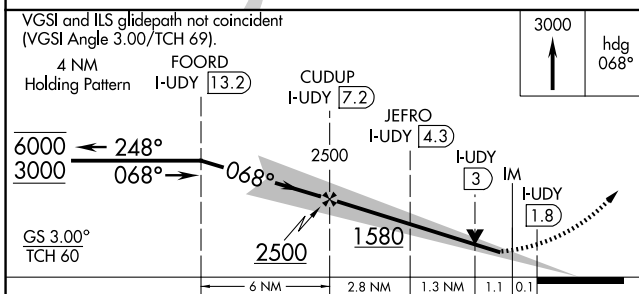
DME required for LOC only.
RNP APCH - GPS. From HENOR or SOSSO.
RADAR required.

ALSIF-2
MISSED APPROACH: Climb to 3000 on heading 068°. Expect RADAR vectors. (RADAR required).

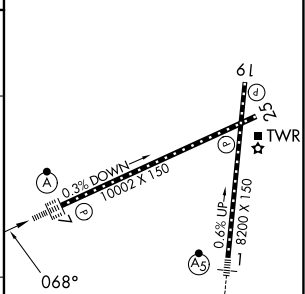
ATIS 127.6	ROCKFORD APP CON 121.0 327.0	ROCKFORD TOWER 118.1 290.375	GND CON 121.9 290.375
----------------------	--	--	---------------------------------



VGSI and ILS glidepath not coincident (VGSI Angle 3.00/TCH 69).
4 NM Holding Pattern FOORD I-UDY 13.2 CUDUP I-UDY 7.2 JEFRO I-UDY 4.3 IM I-UDY 1.8



ELEV 742	TDZE 742
----------	----------



CATEGORY	A	B	C	D
S-ILS 7	942/18		200 (200-½)	
S-LOC 7	1200/24	458 (500-½)	1200/45	458 (500-¾)
CIRCLING	1220-1 478 (500-1)	1280-1 538 (600-1)	1320-1½ 578 (600-1½)	1460-2¼ 718 (800-2¼)

REIL Rwy 19 and 25
HIRL Rwy 1-19 and 7-25
TDZ/CL Rwy 1 and 7

FAF to MAP 5.3 NM					
Knots	60	90	120	150	180
Min:Sec	5:18	3:32	2:39	2:07	1:46

EC-3, 11 JUN 2026 to 09 JUL 2026

EC-3, 11 JUN 2026 to 09 JUL 2026