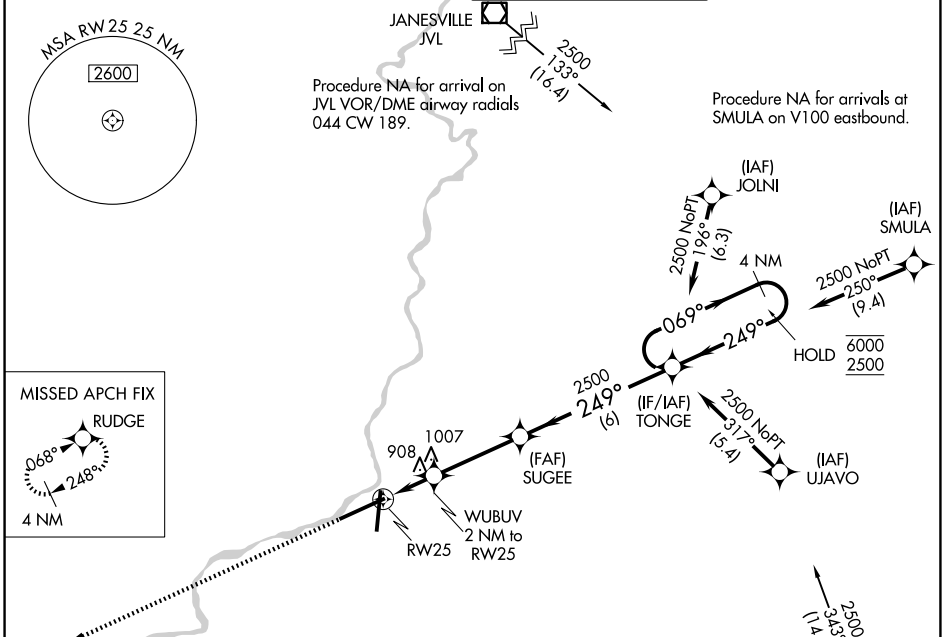


WAAS CH 40128 W25A	APP CRS 249°	Rwy Ldg 10002 TDZE 736 Apt Elev 742
--	------------------------	--

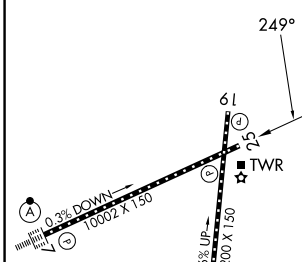
RNAV (GPS) RWY 25

CHICAGO/ROCKFORD INTL (RFD)

RNP APCH. Rwy 25 helicopter visibility reduction below 3/4 SM NA. For uncompensated Baro-VNAV systems, LNAV/VNAV NA below -25°C or above 39°C.		MISSED APPROACH: Climb to 2500 direct RUDGE and hold.	
ATIS 127.6	ROCKFORD APP CON 121.0 327.0	ROCKFORD TOWER 118.1 290.375	GND CON 121.9 290.375



ELEV 742	D	TDZE 736
-----------------	----------	-----------------



2500	RUDGE	VGSI and RNAV glidepath not coincident (VGSI Angle 3.00/TCH 75).	4 NM Holding Pattern
* LNAV only.	WUBUV 2 NM to RW25	SUGEE	TONGE
* 1.1 NM to RW25	* 1400	2500	2500
1.1 NM	0.9	3.4 NM	6 NM
GP 3.00°			TCH 50

CATEGORY	A	B	C	D
LPV DA		986/50	250 (300-1)	
LNAV/VNAV DA		1191-13/8	455 (500-13/8)	
LNAV MDA		1160/55	424 (500-1)	
CIRCLING	1220-1 478 (500-1)	1280-1 538 (600-1)	1320-1 1/2 578 (600-1 1/2)	1460-2 1/4 718 (800-2 1/4)

REIL Rws 19 and 25
HIRL Rws 1-19 and 7-25
TDZ/CL Rws 1 and 7

EC-3, 11 JUN 2026 to 09 JUL 2026

EC-3, 11 JUN 2026 to 09 JUL 2026