

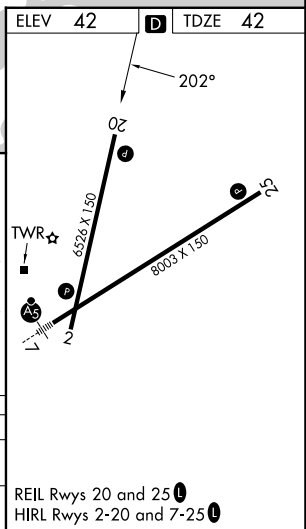
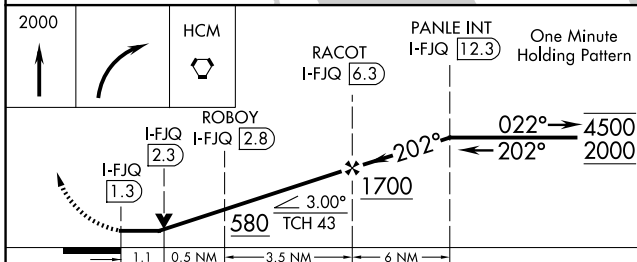
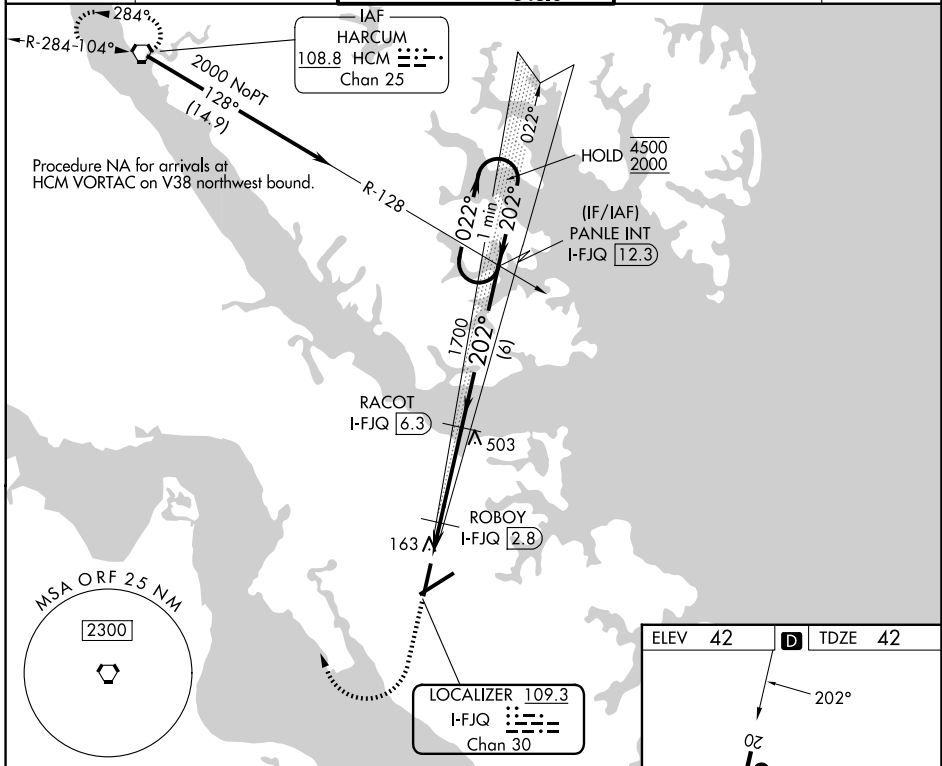
LOC/DME I-FJQ 109.3 Chan 30	APP CRS 202°	Rwy Ldg 6526 TDZE 42 Apt Elev 42
---	------------------------	---

LOC RWY 20

NEWPORT NEWS/WILLIAMSBURG INTL (PHF)

DME required.		<p>▼ Rwy 20 helicopter visibility reduction below 3/4 SM NA. VDP NA when using ORF altimeter setting. When local altimeter setting not received, use ORF altimeter setting and increase all MDAs 60 feet and S-LOC 20 visibility Cat C/D 1/4 SM, and Circling visibility Cat C/D 1/4 SM.</p>		<p>MISSED APPROACH: Climb to 2000 then right turn direct HCM VORTAC and hold.</p>	
---------------	--	--	--	---	--

ATIS 128.65	NORFOLK APP CON 125.7 335.625	NEWPORT NEWS TOWER ★ 118.7 (CTAF) 257.9 348.6	GND CON 121.9 348.6	UNICOM 122.95
-----------------------	---	---	-------------------------------	-------------------------



CATEGORY	A	B	C	D
S-LOC 20	420-1 378 (400-1)			
CIRCLING	520-1 478 (500-1)	540-1 498 (500-1)	760-2 718 (800-2)	780-2 1/4 738 (800-2 1/4)

NE-3, 11 JUN 2026 to 09 JUL 2026

NE-3, 11 JUN 2026 to 09 JUL 2026