

WAAS CH 61020 W02A	APP CRS 022°	Rwy Ldg TDZE Apt Elev	6526 38 42
--	------------------------	-----------------------------	---------------------------------------

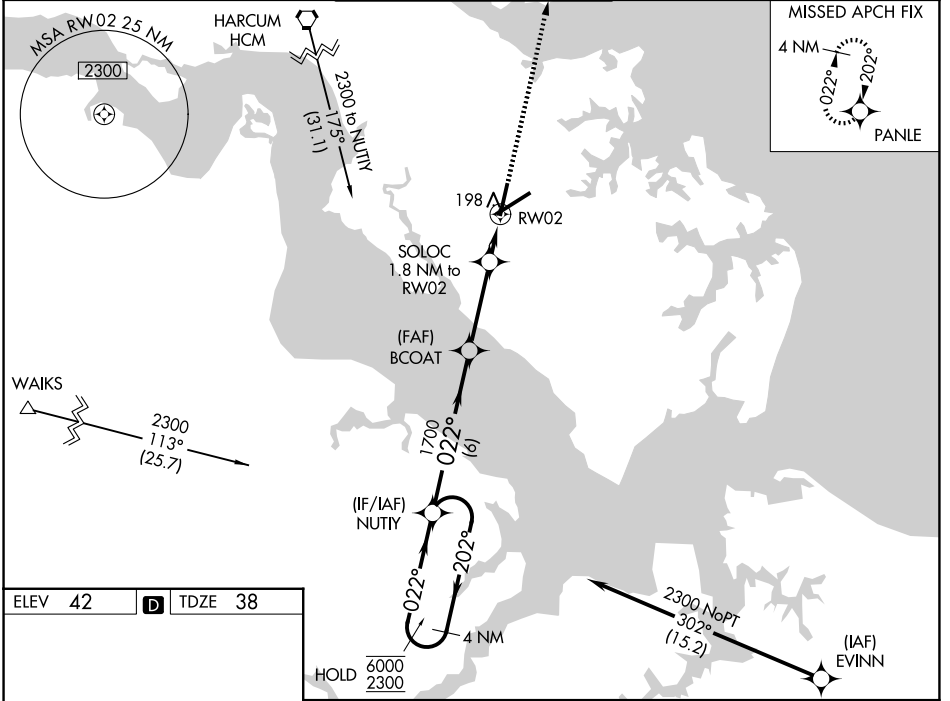
RNAV (GPS) RWY 2

NEWPORT NEWS/WILLIAMSBURG INTL (PHF)

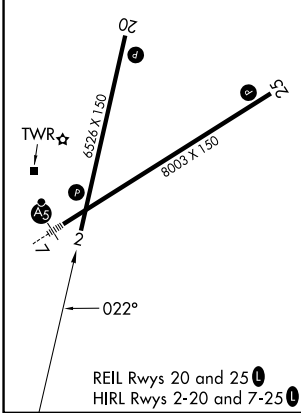
RNP APCH - GPS.		<p>⚠ For uncompensated Baro-VNAV systems, LNAV/VNAV NA below -7°C or above 54°C. Baro-VNAV and VDP NA when using ORF altimeter setting. When local altimeter setting not received, use ORF altimeter setting and increase LPV DA to 289 feet; increase LNAV/VNAV DA to 524 feet and all visibilities ½ SM. Increase all MDAs 60 feet and LNAV visibility Cat C/D ¼ SM, and Circling visibility Cat C/D ¼ SM.</p>	
-----------------	--	--	--

MISSED APPROACH: Climb to 2000 direct PANLE and hold.

ATIS 128.65	NORFOLK APP CON 125.7 335.625	NEWPORT NEWS TOWER* 118.7 (CTAF) 0 257.9 348.6	GND CON 121.9 348.6	UNICOM 122.95
-----------------------	---	--	-------------------------------	-------------------------



ELEV 42	D	TDZE 38
---------	----------	---------



CATEGORY	A	B	C	D
	LPV DA	241-1 203 (200-1)		
LNAV/DA	460-1¼		422 (500-1¼)	
LNAV MDA	460-1	422 (500-1)		460-1¼ 422 (500-1¼)
CIRCLING	520-1	540-1	760-2	780-2¼
	478 (500-1)	498 (500-1)	718 (800-2)	738 (800-2¼)

NE-3, 11 JUN 2026 to 09 JUL 2026

NE-3, 11 JUN 2026 to 09 JUL 2026