

WAAS CH 97420 W20A	APP CRS 202°	Rwy Ldg TDZE Apt Elev	6526 42 42
--	------------------------	-----------------------------	---------------------------------------

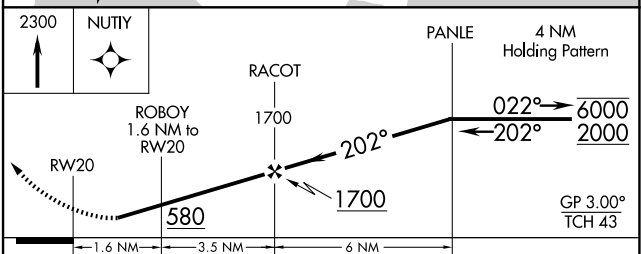
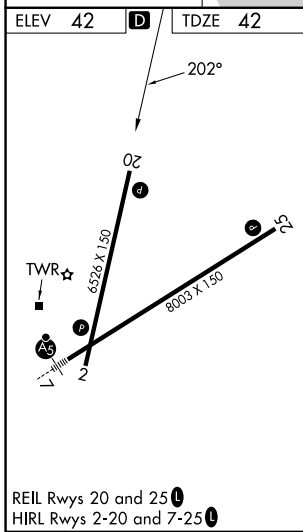
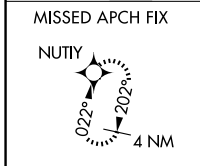
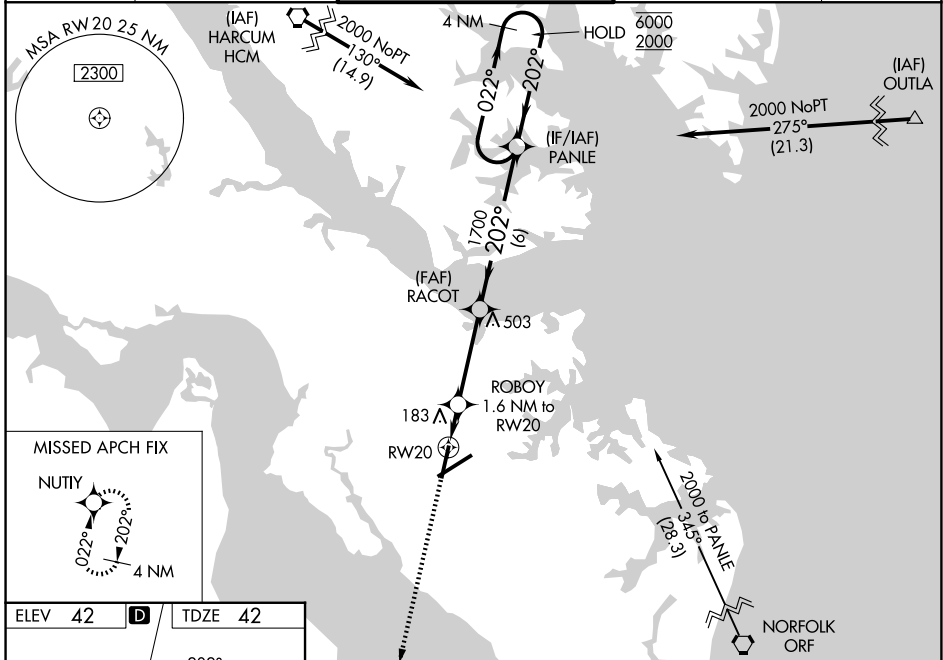
RNAV (GPS) RWY 20
NEWPORT NEWS/WILLIAMSBURG INTL (PHF)

RNP APCH - GPS

- ▼ For uncompensated Baro-VNAV systems, LNAV/VNAV NA below -7°C or above 54°C. Rwy 20 helicopter visibility reduction below 3/4 SM NA. Baro-VNAV NA when using ORF altimeter setting.
- ▲ When local altimeter setting not received, use ORF altimeter setting and increase LPV DA to 427 feet and all visibilities 1/2 SM. Increase LNAV/VNAV DA to 522 feet and all visibilities 1/2 SM. Increase all MDAs 60 feet and LNAV visibility Cat C/D 1/2 SM, and Circling visibility Cat C/D 1/2 SM.

MISSED APPROACH:
Climb to 2300 direct NUTTY and hold.

ATIS 128.65	NORFOLK APP CON 125.7 335.625	NEWPORT NEWS TOWER ★ 118.7 (CTAF) 257.9 348.6	GND CON 121.9 348.6	UNICOM 122.95
-----------------------	---	---	-------------------------------	-------------------------



CATEGORY	A	B	C	D
LPV DA		379-1	337 (400-1)	
LNAV/VNAV DA		440-1 1/8	398 (400-1 1/8)	
LNAV MDA	440-1	398 (400-1)	440-1 1/8	398 (400-1 1/8)
CIRCLING	520-1 478 (500-1)	540-1 498 (500-1)	760-2 718 (800-2)	780-2 1/4 738 (800-2 1/4)

NE-3, 11 JUN 2026 to 09 JUL 2026

NE-3, 11 JUN 2026 to 09 JUL 2026