

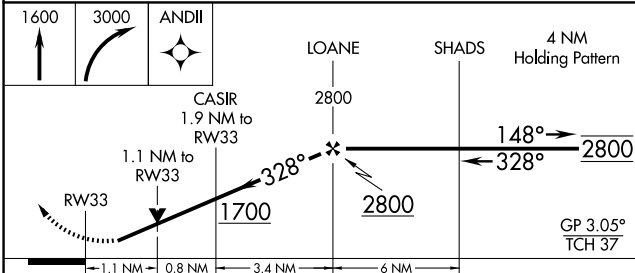
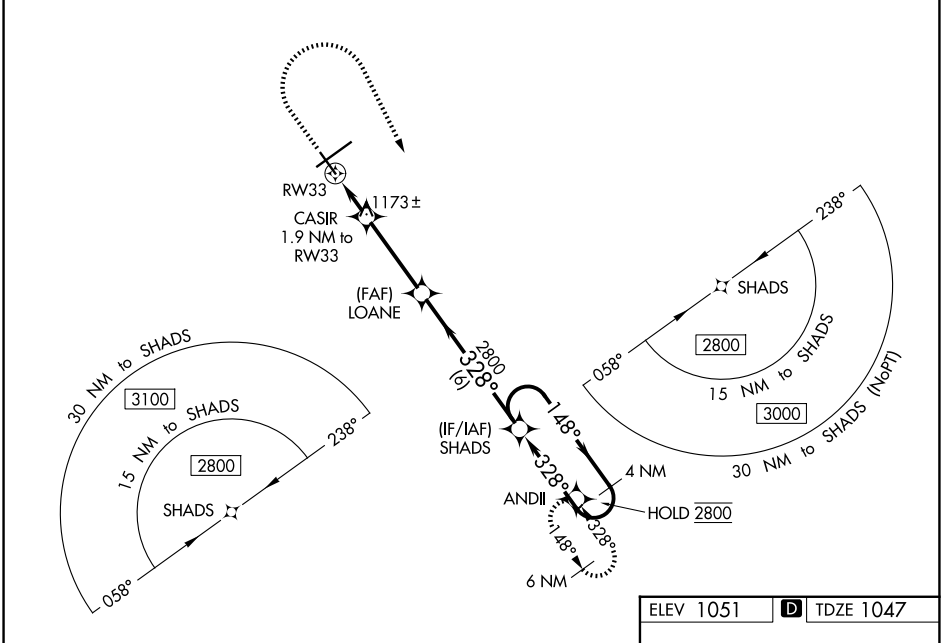
WAAS CH 77545 W33A	APP CRS 328°	Rwy Ldg TDZE Apt Elev	5498 1047 1051
--	------------------------	-----------------------------	---

RNAV (GPS) RWY 33

SPRINGFIELD/BECKLEY MUNI (SGH)

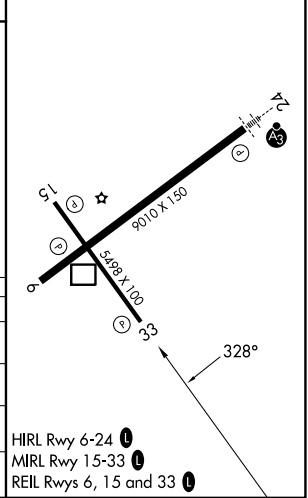
RNP APCH - GPS.	MISSED APPROACH: Climb to 1600 then climbing right turn to 3000 direct ANDII and hold.
<p>Rwy 33 helicopter visibility reduction below 3/4 SM NA. For uncompensated Baro-VNAV systems, LNAV/VNAV NA below -17°C or above 54°C.</p>	

AWOS-3PT 134.975	COLUMBUS APP CON 118.85 269.275	UNICOM 122.95 (CTAF) 0
----------------------------	---	----------------------------------



ELEV 1051 **D** TDZE 1047

CATEGORY	A	B	C	D
LPV DA		1349-7/8	302 (300-7/8)	
LNAV/VNAV DA		1350-7/8	303 (300-7/8)	
LNAV MDA	1440-1	393 (400-1)	1440-1 1/8	393 (400-1 1/8)
CIRCLING	1480-1 429 (500-1)	1580-1 529 (600-1)	1580-1 1/2 529 (600-1 1/2)	1620-2 569 (600-2)



- HIRL Rwy 6-24 0
- MIRL Rwy 15-33 0
- REIL Rws 6, 15 and 33 0

EC-2, 11 JUN 2026 to 09 JUL 2026

EC-2, 11 JUN 2026 to 09 JUL 2026