


MARIETTA, GEORGIA

RNAV (GPS) RWY 29

| | |
|-------------------------|---------------------------|
| APCH CRS 289° | Rwy Idg 10,002 |
| | TDZE 1014 |
| | Arprt Elev 1069 |

- (USAF)

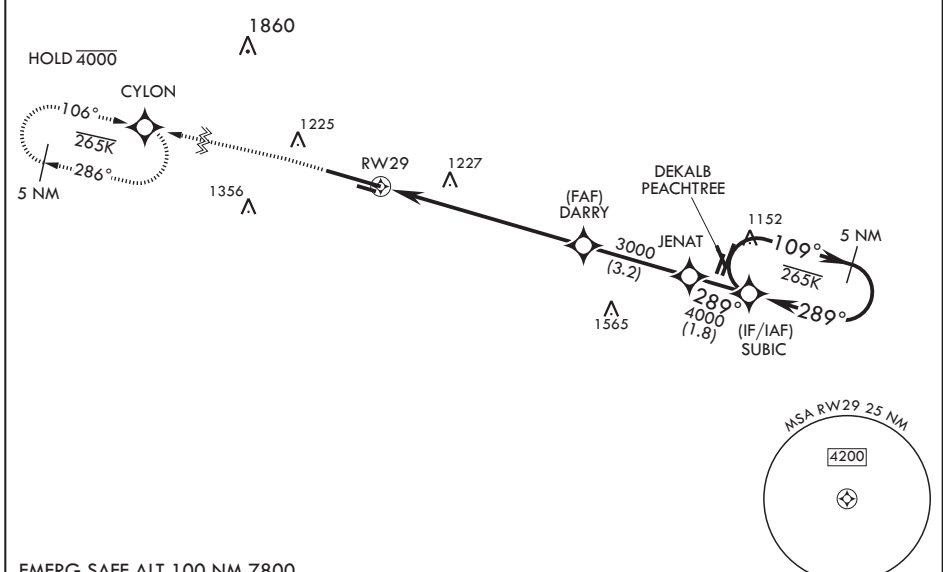
DOBBINS ARB (KMGE)

| | | |
|---|--|---|
| RNP APCH. DME/DME RNP- 0.3 NA | SALS  | MISSED APPROACH: Climb to 2000 then climbing left turn to 3000 direct CYLON and hold. |
| <p>▼ * When ALS inop, increase vis to 1 3/8 miles. ** When ALS inop, increase CAT AB RVR to 55 and vis to 1 mile, CAT CDE vis to 1 3/8 miles.</p> | | |




| | | | | |
|-----------------------|---|---------------------------------|-------------------------------|-----|
| ATIS* 269.5 | ATLANTA APP CON/DEP CON 121.0 268.7 | TOWER* 120.75 370.875 | GND CON 125.3 275.8 | ASR |
|-----------------------|---|---------------------------------|-------------------------------|-----|

*** Circling not authorized N of Rwy 11-29 for CAT DE. Circling to assault strip not authorized.

For uncompensated Baro-VNAV systems, LNAV/VNAV NA below -17°C or above 54°C.



EMERG SAFE ALT 100 NM 7800

| | | | | | |
|---|---|-----------------------|-----------------------|-------------------------|-------------------------|
| 2000 crs 289° 3000 CYLON  | 5 NM Holding Pattern ELEV 1069 TDZE 1014 | | | | |
| RWY29 1.5 NM to RWY29 6.1 NM 3000 DARRY 4000 JENAT 289° 109° 4000 SUBIC 289° GP 3.00° TCH 58 |  | | | | |
| CATEGORY | A | B | C | D | E |
| LNAV/VNAV DA* | 1480/60 | | 466 | (500-1¼) | |
| LNAV MDA** | 1520/40 | 506 (500-¾) | 1520-1¼ | 506 | (500-1¼) |
|  CIRCLING*** | 1580-1 511 (600-1) | 1620-1 551 (600-1) | 1760-2 691 (700-2) | 1760-2¼ 691 (700-2¼) | 1760-2½ 691 (700-2½) |
| HIRL all Rwys REIL Rwys 11, 29 | | | | | |

MARIETTA, GEORGIA

33°55'N - 84°31'W

DOBBINS ARB (KMGE)

Amdt 3 11JUL24

RNAV (GPS) RWY 29

SE-4, 11 JUN 2026 to 09 JUL 2026

SE-4, 11 JUN 2026 to 09 JUL 2026