


MARIETTA, GEORGIA

# TACAN RWY 11

TACAN Chan <b>77</b>	DOB	APCH CRS <b>106°</b>	Rwy Idg <b>10,002</b> TDZE <b>1069</b> Arprt Elev <b>1069</b>	[USAF]	DOBBINS ARB (KMGE)
-------------------------	-----	-------------------------	---	--------	--------------------

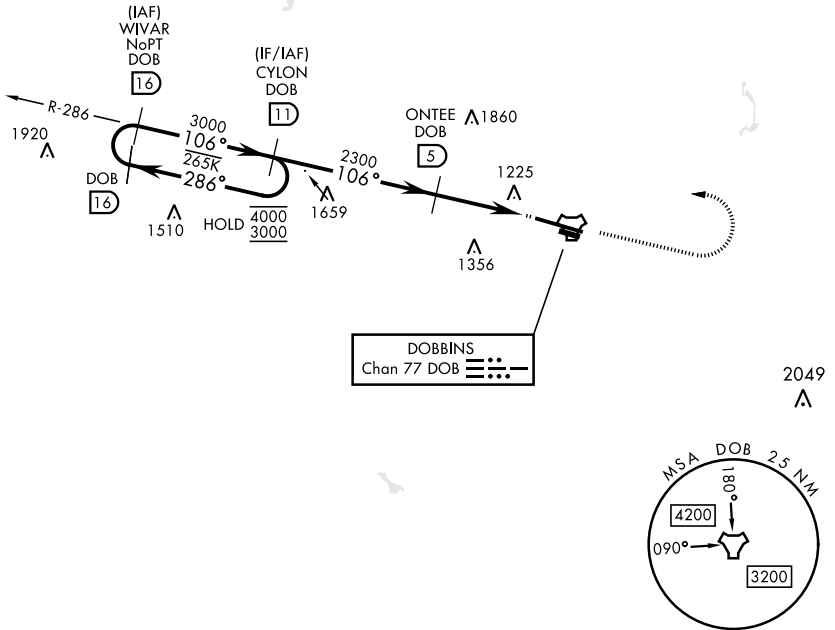
▼ \* When ALS inop, increase CAT AB RVR to 55 and vis to 1 mile, CAT CDE vis to 1½ miles.  
 \*\* Circling not authorized N of Rwy 11-29 for CAT DE aircraft. Circling to assault strip not authorized.

ALSF-1 

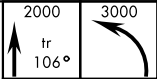

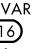

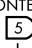

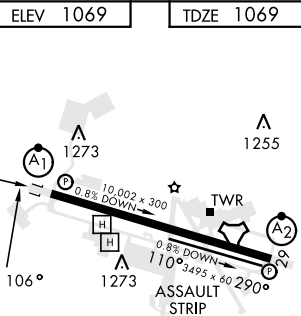
† MISSED APPROACH: Climb to 2000 on track 106°, then climbing left turn to 3000, intercept DOB TACAN R-286 to CYLON and hold.

ATIS ★ <b>269.5</b>	ATLANTA APP CON <b>121.0 268.7</b>	TOWER ★ <b>120.75 370.875</b>	GND CON <b>125.3 275.8</b>	ASR
------------------------	---------------------------------------	----------------------------------	-------------------------------	-----

† Missed approach requires use of RNAV or ATC RADAR monitoring.



EMERG SAFE ALT 100 NM 7800

			CYLON DOB 	ELEV 1069	TDZE 1069
	WIVAR 	CYLON 	ONTEE 	KAMSE 	TACAN
	3000	3000	2300	2.97° TCH 56	
			3.2 NM	0.5 NM	
CATEGORY	A	B	C	D	E
S-11*	1600/40	531 (600-¾)	1600/55	531 (600-1)	
 CIRCLING**	1600-1 531 (600-1)	1620-1 551 (600-1)	1760-2 691 (700-2)	1760-2¼ 691 (700-2¼)	1760-2½ 691 (700-2½)
					
	HIRL Rwy 11-29 REIL Rwy 11 and 29				

MARIETTA, GEORGIA

33°55'N-84°31'W

DOBBINS ARB (KMGE)

Amdt 8 11JUL24

# TACAN RWY 11

SE-4, 11 JUN 2026 to 09 JUL 2026

SE-4, 11 JUN 2026 to 09 JUL 2026