

LOC/DME I-ONT <b>109.7</b> Chan <b>34</b>	APP CRS <b>258°</b>	Rwy Ldg TDZE <b>932</b> Apt Elev <b>944</b>
---	------------------------	---

# ILS RWY 26R (CAT II & III)

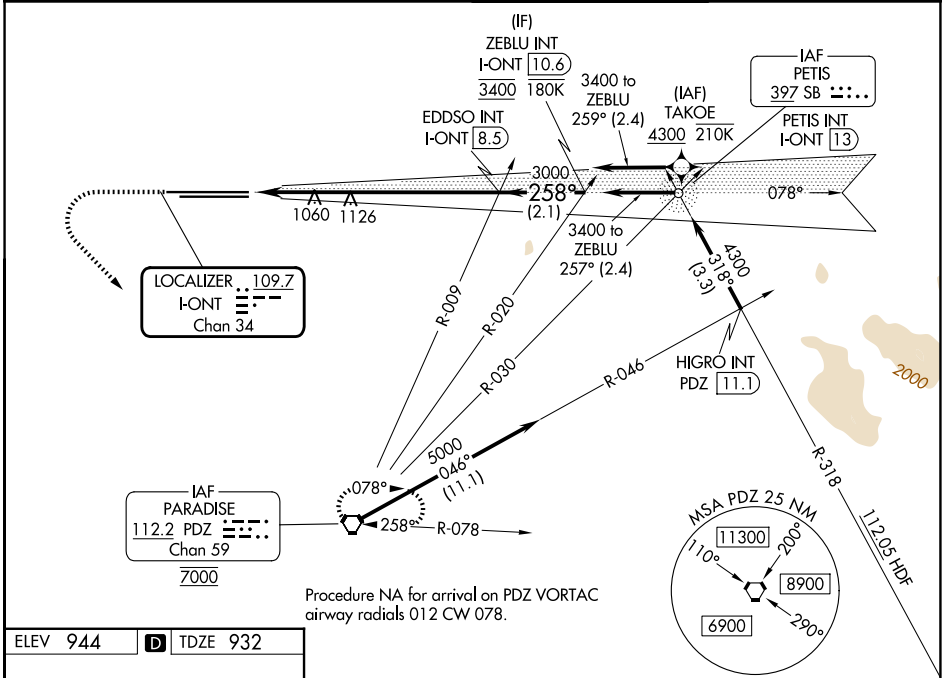
ONTARIO INTL (ONT)

RNP APCH - GPS. From TAKOE.

ALSF-2

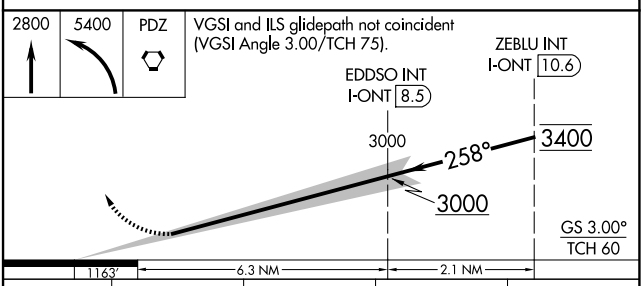
MISSED APPROACH: Climb to 2800 then climbing left turn to 5400 direct PDZ VORTAC and hold, continue climb-in-hold to 5400.

D-ATIS <b>124.25</b>	SOCAL APP CON <b>127.0 318.2</b>	ONTARIO TOWER <b>120.6 360.775</b>	GND CON <b>121.9 257.8</b>
-------------------------	-------------------------------------	---------------------------------------	-------------------------------



Procedure NA for arrival on PDZ VORTAC  
airway radials 012 CW 078.

ELEV <b>944</b>	<b>D</b>	TDZE <b>932</b>
-----------------	----------	-----------------



CATEGORY	A	B	C	D
S-ILS 26R	CAT II RA 100/12 100 DA 1032			
S-ILS 26R	CAT III RVR 03			

## CATEGORY II & III ILS - SPECIAL AIRCREW & AIRCRAFT CERTIFICATION REQUIRED

TDZL/RCLS Rwy 8L, 26L and 26R  
HIRL Rwy 8L-26R and 8R-26L

SW-3, 11 JUN 2026 to 09 JUL 2026

SW-3, 11 JUN 2026 to 09 JUL 2026