

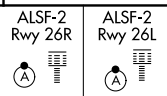
LOC/DME I-ONT <b>109.7</b> Chan <b>34</b>	APP CRS <b>258°</b>	Rwy Ldg 26R <b>12197</b> 26L <b>10200</b> TDZE <b>932</b> 926 Apt Elev <b>944</b> 944
---	------------------------	---

# ILS or LOC RWY 26R

ONTARIO INTL (ONT)

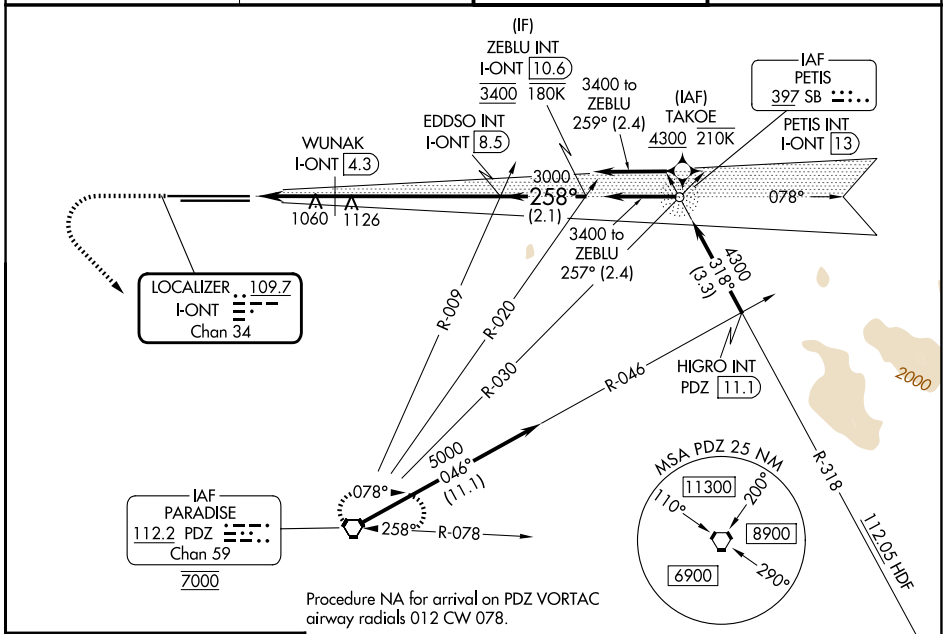
RNP APCH - GPS. From TAKOE.

**⚠** Circling NA north of Rwy 8L-26R. For inop ALS, increase S-LOC 26R Cat C and D visibility to 2 SM.

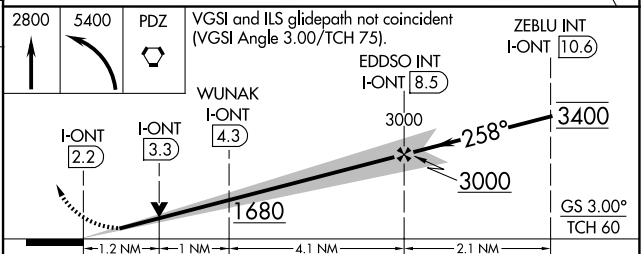


**MISSED APPROACH:** Climb to 2800 then climbing left turn to 5400 direct PDZ VORTAC and hold, continue climb-in-hold to 5400.

D-ATIS <b>124.25</b>	SOCAL APP CON <b>127.0 318.2</b>	ONTARIO TOWER <b>120.6 360.775</b>	GND CON <b>121.9 257.8</b>
-------------------------	-------------------------------------	---------------------------------------	-------------------------------



ELEV <b>944</b>	<b>D</b> TDZE 26R <b>932</b> TDZE 26L <b>926</b>
-----------------	---



CATEGORY	A	B	C	D
S-ILS 26R	1132/18 200 (200-½)			
S-LOC 26R	1680/24 748 (800-½)	1680/40 748 (800-¾)	1680-1¾ 754 (800-1¾)	748 (800-1¾)
SIDESTEP 26L	1680/55	754 (800-1)	1680-1¾ 754 (800-1¾)	1680-2 754 (800-2)
CIRCLING	1680-1 736 (800-1)	1680-1¼ 736 (800-1¼)	1680-2¼ 736 (800-2¼)	1680-2½ 736 (800-2½)
WUNAK FIX MINIMUMS (DME REQUIRED)				
S-LOC 26R	1320/24	388 (400-½)	1320/35	388 (400-⅝)

TDZL/RCLS Rwy 8L, 26L and 26R  
HIRL Rwy 8L-26R and 8R-26L

FAF to MAP 6.3 NM

Knots	60	90	120	150	180
Min:Sec	6:18	4:12	3:09	2:31	2:06

SW-3, 11 JUN 2026 to 09 JUL 2026

SW-3, 11 JUN 2026 to 09 JUL 2026