

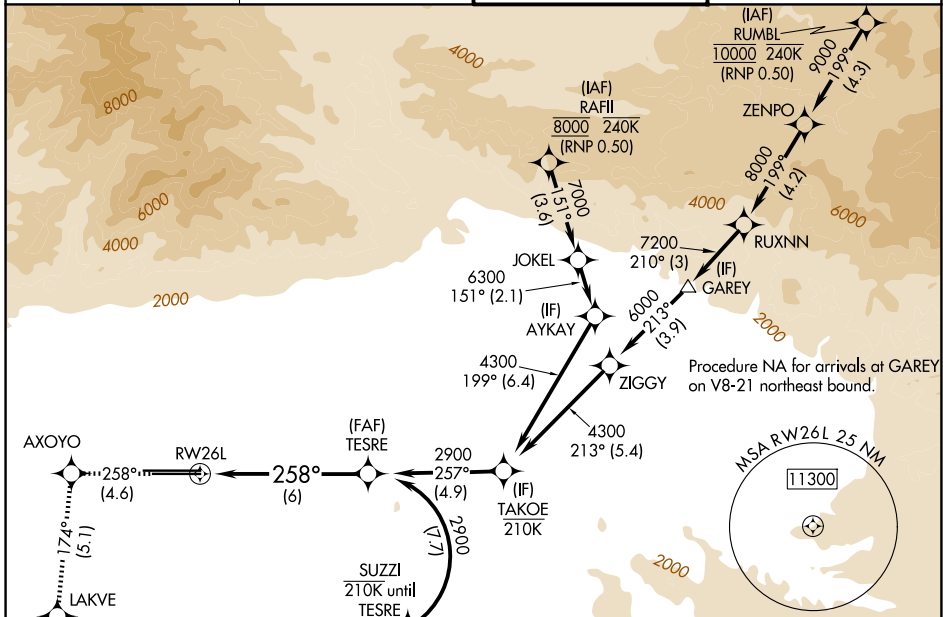
APP CRS	Rwy Ldg	<b>10200</b>
<b>258°</b>	TDZE	<b>926</b>
	Apt Elev	<b>944</b>

# RNAV (RNP) Z RWY 26L

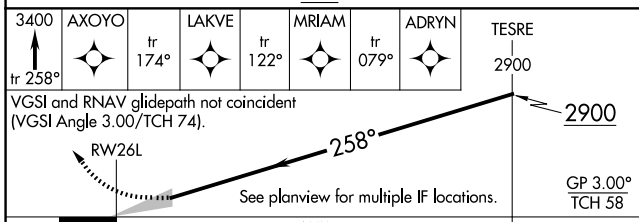
ONTARIO INTL (ONT)

RNP AR APCH - GPS.	ALSF-2 	MISSED APPROACH: Climb to 3400 on track 258° to AXOYO and track 174° to LAKVE and track 122° to MRIAM and track 079° to ADRYN and hold.
For uncompensated Baro-VNAV systems, procedure NA below 1°C or above 54°C. For inop ALS, increase RNP 0.10 visibility all Cats to RVR 4500, RNP 0.17 visibility all Cats to RVR 5000, RNP 0.30 visibility all Cats to RVR 6000.		

D-ATIS <b>124.25</b>	SOCAL APP CON <b>127.0 318.2</b>	ONTARIO TOWER <b>120.6 360.775</b>	GND CON <b>121.9 257.8</b>
-------------------------	-------------------------------------	---------------------------------------	-------------------------------

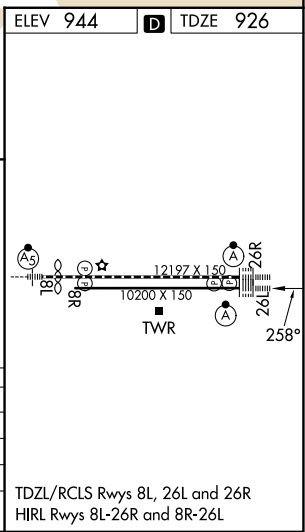


ELEV 944		TDZE 926
----------	--	----------



CATEGORY	A	B	C	D
RNP 0.10 DA		1203/24	277 (300-½)	
RNP 0.17 DA		1245/24	319 (400-½)	
RNP 0.30 DA		1322/35	396 (400-¾)	

**AUTHORIZATION REQUIRED**



TDZL/RCLS Rwy 8L, 26L and 26R  
HIRL Rwy 8L-26R and 8R-26L

SW-3, 11 JUN 2026 to 09 JUL 2026

SW-3, 11 JUN 2026 to 09 JUL 2026