

RNAV (RNP) Z RWY 26R

ONTARIO INTL (ONT)

APP CRS	Rwy Ldg	12197
258°	TDZE	932
	Apt Elev	944

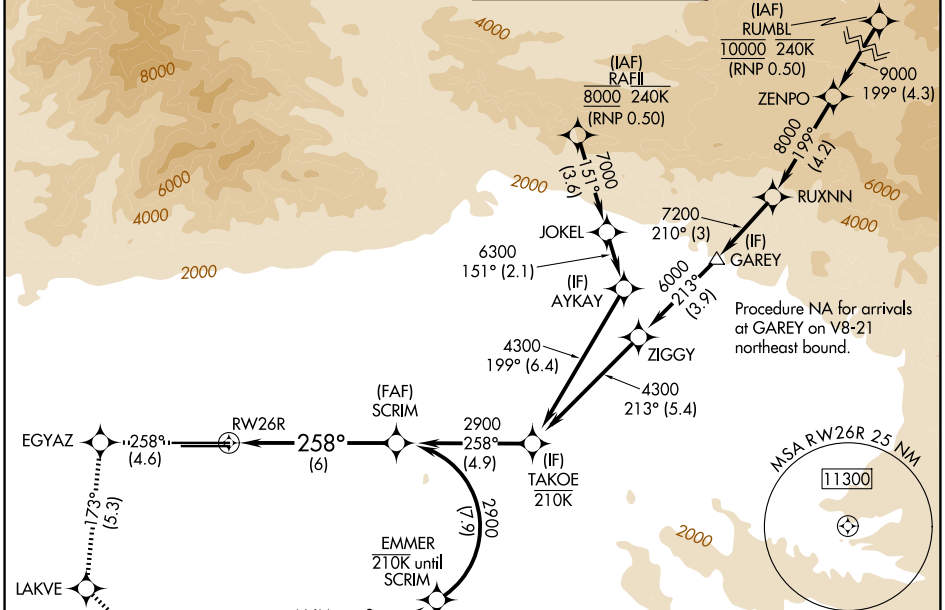
RNP AR APCH - GPS.

▼ For uncompensated Baro-VNAV systems, procedure NA below 1°C or above 54°C. For inop ALS, increase RNP 0.12 visibility all Cats to RVR 4500, RNP 0.21 visibility all Cats to RVR 5500, RNP 0.30 visibility all Cats to RVR 6000.

ALSf-2

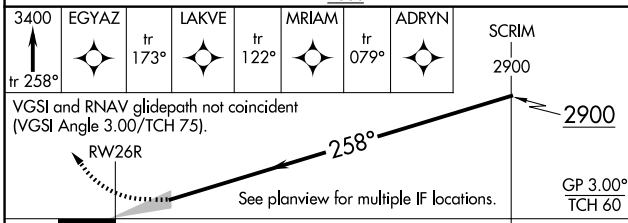
MISSED APPROACH: Climb to 3400 on track 258° to EGYAZ and track 173° to LAKVE and track 122° to MARIAM and on track 079° to ADRYN and hold.

D-ATIS 124.25	SOCAL APP CON 127.0 318.2	ONTARIO TOWER 120.6 360.775	GND CON 121.9 257.8
-------------------------	-------------------------------------	---------------------------------------	-------------------------------



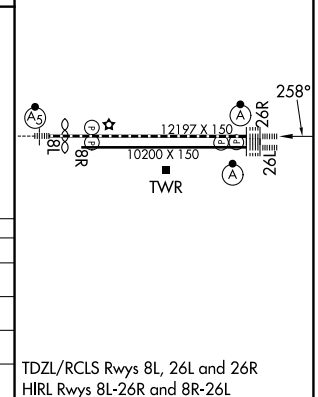
Procedure NA for arrivals at GAREY on V8-21 northeast bound.

Procedure NA for arrival on PDZ VORTAC airway radials 012 CW 078.



ELEV 944	D TDZE 932
----------	-------------------

CATEGORY	A	B	C	D
RNP 0.12 DA		1239/40	307 (300-¾)	
RNP 0.21 DA		1297/40	365 (400-¾)	
RNP 0.30 DA		1321/40	389 (400-¾)	



AUTHORIZATION REQUIRED

TDZL/RCLS Rwy 8L, 26L and 26R
HIRL Rwy 8L-26R and 8R-26L

SW-3, 11 JUN 2026 to 09 JUL 2026

SW-3, 11 JUN 2026 to 09 JUL 2026