

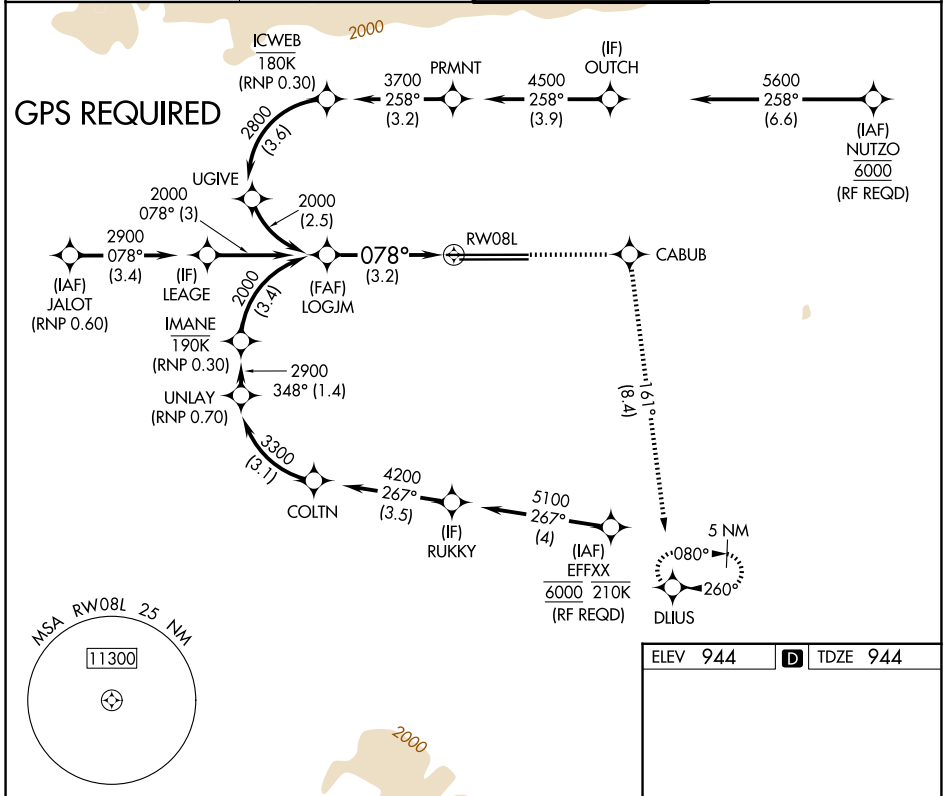
APP CRS	Rwy Ldg	<b>11200</b>
<b>078°</b>	TDZE	<b>944</b>
	Apt Elev	<b>944</b>

# RNAV (RNP) Z RWY 8L

ONTARIO INTL (ONT)

	For uncompensated Baro-VNAV systems, procedure NA below 2°C (36°F) or above 54°C (130°F).	<b>MALSR</b> 	MISSED APPROACH: Climb to 5300 direct CABUB on track 161° to DLIUS and hold, continue climb-in-hold to 5300.

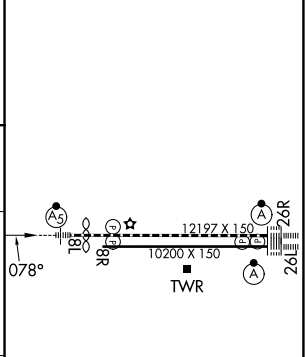
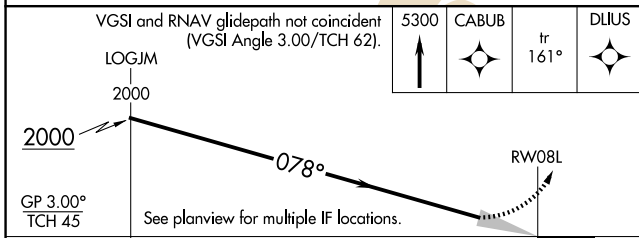
D-ATIS <b>124.25</b>	SOCAL APP CON <b>127.0 318.2</b>	ONTARIO TOWER <b>120.6 360.775</b>	GND CON <b>121.9 257.8</b>
-------------------------	-------------------------------------	---------------------------------------	-------------------------------



SW-3, 11 JUN 2026 to 09 JUL 2026

SW-3, 11 JUN 2026 to 09 JUL 2026

ELEV 944	<b>D</b> TDZE 944
----------	-------------------



CATEGORY	A	B	C	D
RNP 0.30 DA		1490-13 <sup>8</sup> / <sub>8</sub>	546 (600-13 <sup>8</sup> / <sub>8</sub> )	

**AUTHORIZATION REQUIRED**

TDZL/RCLS Rwy 8L, 26L and 26R  
HIRL Rwy 8L-26R and 8R-26L