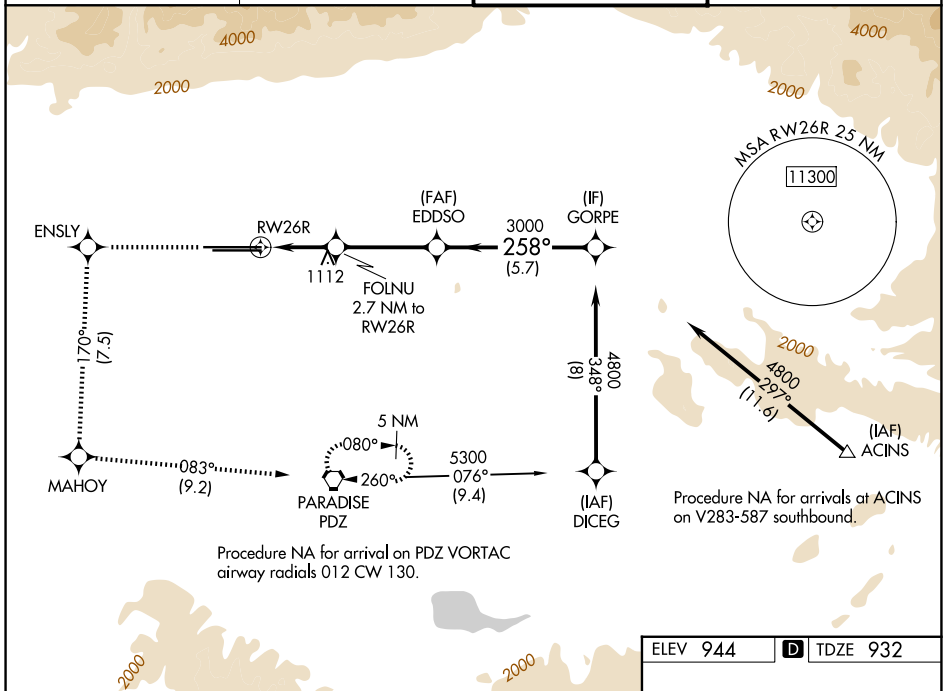


WAAS CH <b>53406</b> <b>W26A</b>	APP CRS <b>258°</b>	Rwy Ldg <b>12197</b> TDZE <b>932</b> Apt Elev <b>944</b>
--	------------------------	--

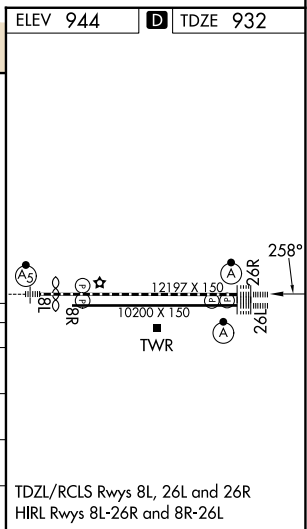
# RNAV (GPS) Y RWY 26R

ONTARIO INTL (ONT)

RNP APCH - GPS.		ALSIF-2	MISSED APPROACH: Climb to 4700 direct ENSLY and on track 170° to MAHOY and on track 083° to PDZ VORTAC and hold, continue climb-in-hold to 4700.	
<p>▼ Circling NA north of Rwy 8L-26R. For uncompensated Baro-VNAV systems, procedure NA below 2°C or above 54°C.</p>		(A)		
D-ATIS <b>124.25</b>	SOCAL APP CON <b>127.0 318.2</b>	ONTARIO TOWER <b>120.6 360.775</b>	GND CON <b>121.9 257.8</b>	



4700	↑	ENSLY	tr 170°	MAHOY	tr 083°	PDZ	VGSI and RNAV glidepath not coincident (VGSI Angle 3.00/TCH 75).
							EDDSO
							GORPE
							3000
							4800
							258°
							3000
							GP 3.00°
							TCH 60
CATEGORY		A		B		C	D
LPV DA				1132/18		200 (200-½)	
LNAV/VNAV DA				1267/55		335 (400-1)	
LNAV MDA		1380/24		448 (500-½)		1380/45	448 (500-¾)
CIRCLING		1400-1		456 (500-1)		1500-1½	1540-2
						556 (600-1½)	596 (600-2)



SW-3, 11 JUN 2026 to 09 JUL 2026

SW-3, 11 JUN 2026 to 09 JUL 2026