

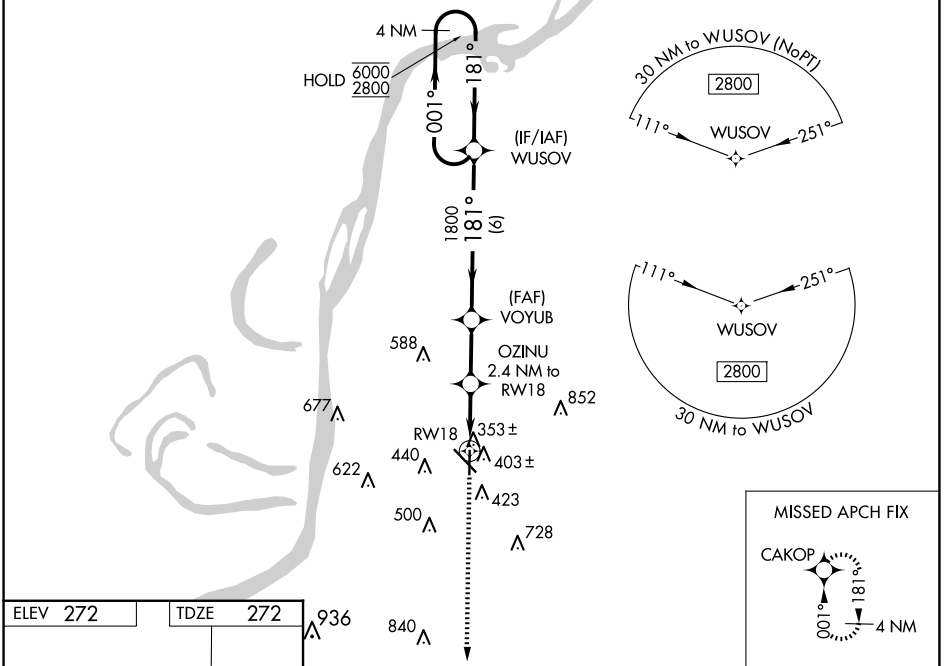
WAAS CH 45734 W18A	APP CRS 181°	Rwy ldg 5000 TDZE 272 Apt Elev 272
--	------------------------	---

RNAV (GPS) RWY 18

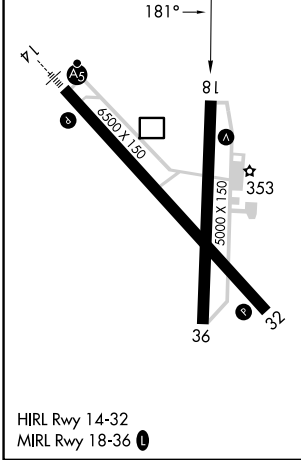
HARDY-ANDERS FLD/NATCHEZ-ADAMS COUNTY (H/E/Z)

RNP APCH.	MISSED APPROACH: Climb to 2800 direct CAKOP and hold.
<p>Circling Rwy 36 NA at night. Rwy 18 helicopter visibility reduction below 3/4 SM NA.</p>	

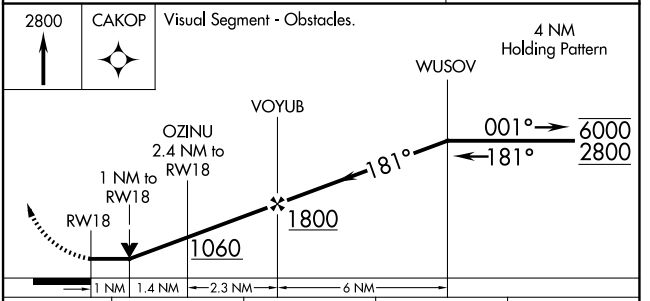
AWOS-3PT 124.675	HOUSTON CENTER 120.975 299.6	UNICOM 122.8 (CTAF) 0
----------------------------	--	---------------------------------



ELEV 272	TDZE 272
----------	----------



HIRL Rwy 14-32
MRL Rwy 18-36



CATEGORY	A	B	C	D
LP MDA	620-1 348 (400-1)			
LNAV MDA	660-1	388 (400-1)	660-1 1/8	388 (400-1 1/8)
CIRCLING	740-1 468 (500-1)	820-1 548 (600-1)	1020-2 1/4 748 (800-2 1/4)	1220-3 948 (1000-3)

SC-4, 11 JUN 2026 to 09 JUL 2026

SC-4, 11 JUN 2026 to 09 JUL 2026