

WAAS CH 93730	APP CRS 194°	Rwy Ldg TDZE Apt Elev	5004 787 787
-------------------------	------------------------	-----------------------------	---

RNAV (GPS) Z RWY 19

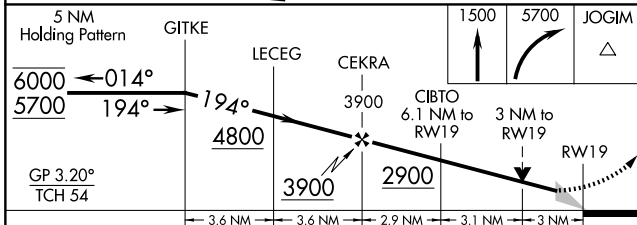
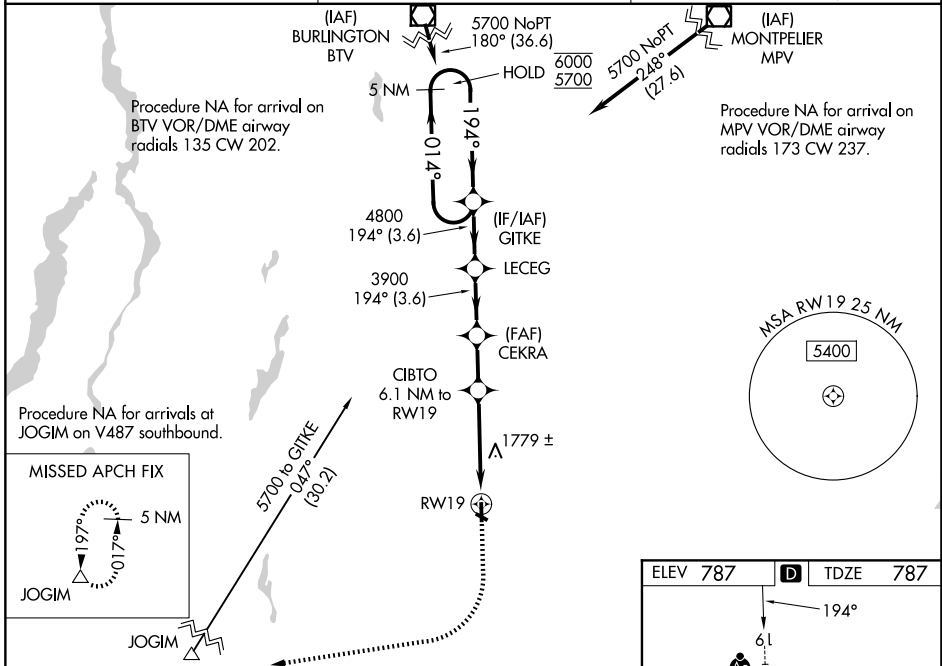
RUTLAND/SOUTHERN VERMONT RGNL (RUT)

RNP APCH - GPS.

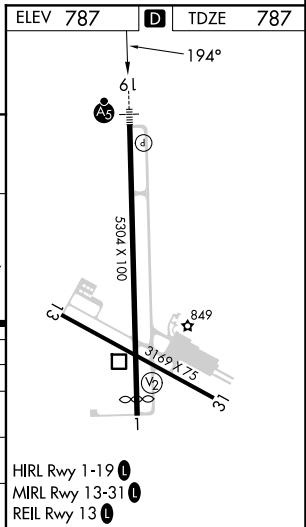
MAJRS MISSED APPROACH: Climb to 1500 then climbing right turn to 5700 direct JOGIM and hold, continue climb-in-hold to 5700. Missed approach requires minimum climb of 420 feet per NM to 3200; if unable to meet climb gradient, see RNAV (GPS) Y Rwy 19.

Warnings:
 ⚠️ Circling NA northeast of Rws 19 and 31. Circling Rwy 13, 31 NA at night. Inop table does not apply to LNAV/VNAV all Cats. Baro-VNAV NA. For inop ALS, increase LPV all Cats visibility to 1 1/8 miles. VDP NA when using VSF altimeter setting. For inop ALS while using VSF altimeter setting, increase LPV all Cats visibility to 1 1/8 miles. Inop table does not apply when using VSF altimeter setting to LNAV/VNAV all Cats and LNAV Cat C. When local altimeter setting not received, use VSF altimeter setting and increase LPV DA to 1281 feet and all visibilities 1/2 SM; increase LNAV/VNAV DA to 2230 feet; increase all MDAs 80 feet and LNAV visibility Cat C 1/2 SM.

AWOS-3PT 118.375	BOSTON CENTER 135.7 282.2	UNICOM 122.8 (CTAF)
----------------------------	-------------------------------------	-------------------------------



CATEGORY	A	B	C	D
LPV DA †	1201-3/4	414 (500-3/4)		NA
LNAV/VNAV DA	2150-5	1363 (1400-5)		NA
LNAV MDA †	1820-3/4 1033 (1100-3/4)	1820-1 1033 (1100-1)	1820-2 1/2 1033 (1100-2 1/2)	NA
CIRCLING	2560-1 1/4 1773 (1800-1 1/4)	2560-1 1/2 1773 (1800-1 1/2)	2560-3 1773 (1800-3)	NA



NE-1, 11 JUN 2026 to 09 JUL 2026

NE-1, 11 JUN 2026 to 09 JUL 2026