

| | | | |
|--|------------------------|-----------------------------|---|
| WAAS CH 73036 W12A | APP CRS 115° | Rwy Ldg TDZE Apt Elev | 6000 1621 1648 |
|--|------------------------|-----------------------------|---|

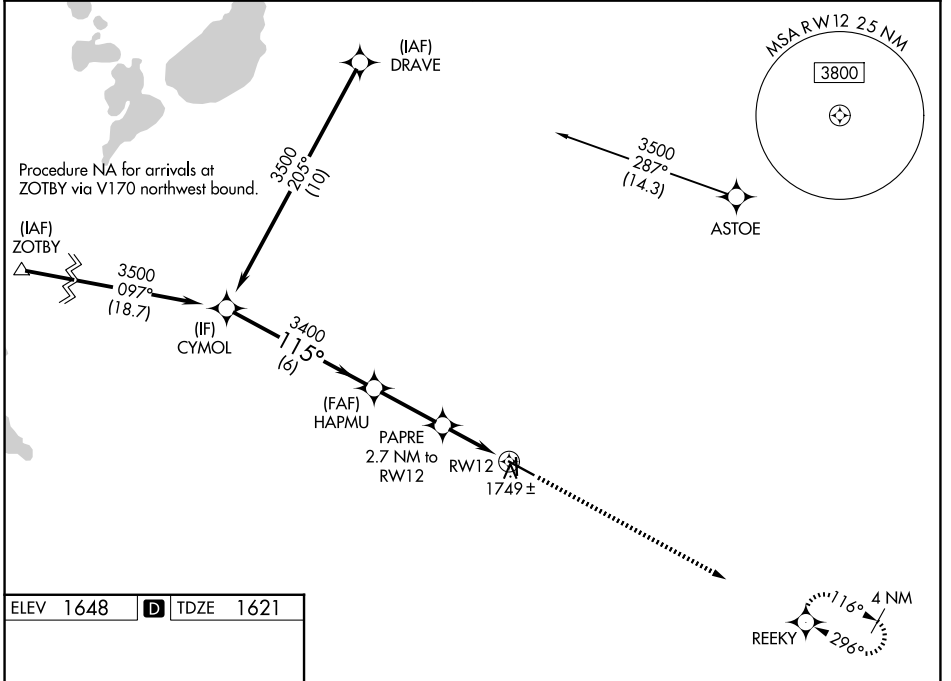
RNAV (GPS) RWY 12

BROOKINGS RGNL (BKX)

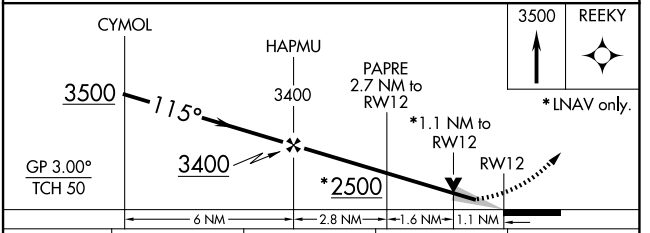
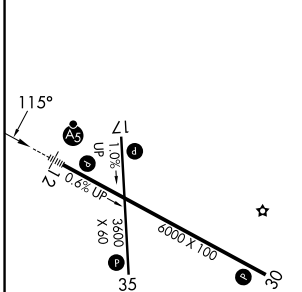
⚠ For uncompensated Baro-VNAV systems, LNAV/VNAV NA below -18°C (0°F) or above 54°C (130°F). DME/DME RNP-0.3 NA. When local altimeter setting not received, use Pipestone altimeter setting and increase all DA 81 feet and all MDA 100 feet; increase LNAV/VNAV all Cats visibility ¼ mile; LNAV Cts C and D visibility ⅜ mile; Circling Cts C and D visibility ¼ mile. Baro-VNAV and VDP NA when using Pipestone altimeter setting. Night landing Rwy 17 NA.

MALS R MISSED APPROACH: Climb to 3500 direct REEKY and hold.

| | | | |
|----------------------------|---|-----------------------|-------------------------------|
| AWOS-3PT 119.925 | MINNEAPOLIS CENTER 132.05 317.4 | GCO 121.725 | UNICOM 123.0 (CTAF) |
|----------------------------|---|-----------------------|-------------------------------|



| | | |
|-----------|----------|-----------|
| ELEV 1648 | D | TDZE 1621 |
|-----------|----------|-----------|



| CATEGORY | A | B | C | D |
|--------------|-----------------------|-----------------------|-----------------------|-------------------------|
| LPV DA | 1821-½ 200 (200-½) | | | |
| LNAV/VNAV DA | 1948-⅝ 327 (300-⅝) | | | |
| LNAV MDA | 2000-½ 379 (400-½) | 2000-⅝ 379 (400-⅝) | | |
| CIRCLING | 2140-1 492 (500-1) | 2160-1 512 (600-1) | 2340-2 692 (700-2) | 2340-2¼ 692 (700-2¼) |

HIRL Rwy 12-30
MIRL Rwy 17-35
REIL Rwy 17, 30 and 35

NC-1, 11 JUN 2026 to 09 JUL 2026

NC-1, 11 JUN 2026 to 09 JUL 2026