

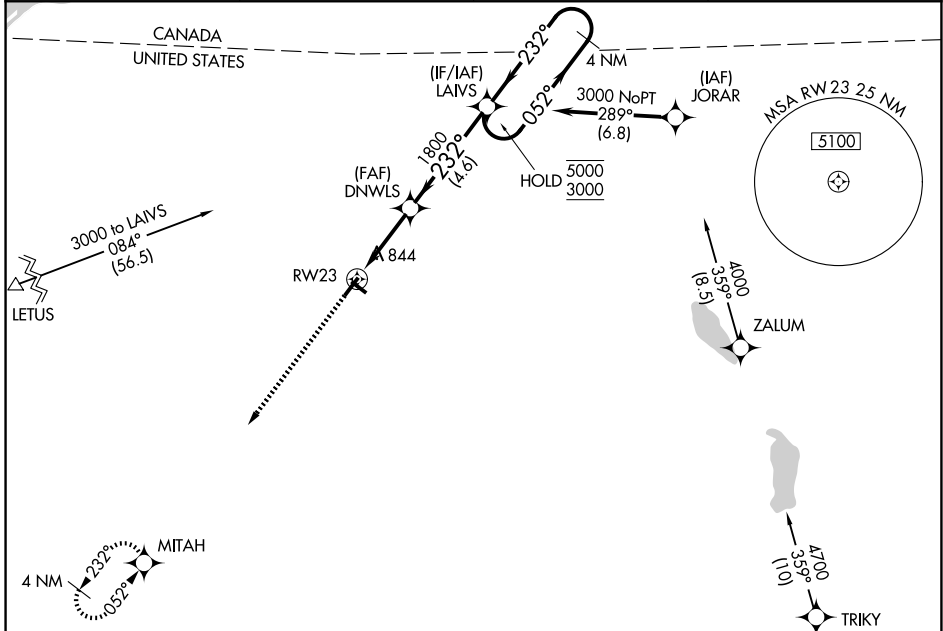
WAAS CH 58229 W23A	APP CRS 232°	Rwy Ldg 3994 TDZE 770 Apt Elev 790
--	------------------------	---

RNAV (GPS) RWY 23

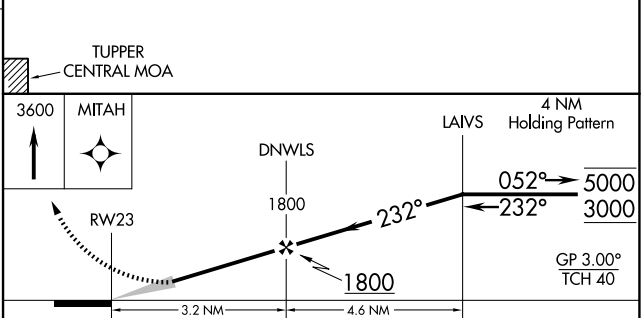
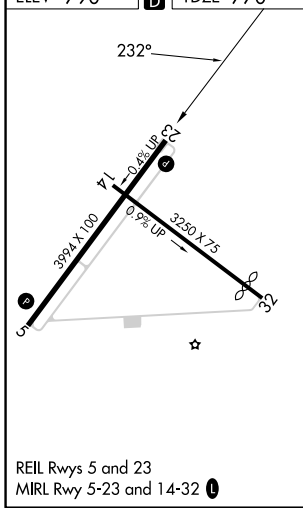
MALONE-DUFORT (MAL)

RNP APCH - GPS.		MISSED APPROACH: Climb to 3600 direct MITAH and hold.	
<p>▼ ▲ NA</p> <p>Circling Rwy 5 NA at night. Baro-VNAV NA. Use Massena Intl-Richards Fld altimeter setting; when not received, use Adirondack Rgnl altimeter setting and increase LPV DA to 1208 feet; increase LNAV/VNAV DA to 1316 feet; increase all MDAs 60 feet. Increase LPV all Cats visibility 1/8 SM, LNAV/VNAV all Cats 1/4 SM, LNAV Cat C 1/8 SM and Circling Cat C visibility 1/4 SM.</p>			

AWOS-AV 122.8	MSS ASOS 128.075	BOSTON CENTER 135.25 377.1	UNICOM 122.8 (CTAF) 0
-------------------------	----------------------------	--------------------------------------	---------------------------------



ELEV 790	D	TDZE 770
----------	----------	----------



CATEGORY	A	B	C	D
LPV DA	1155-1 1/8	385 (400-1 1/8)		NA
LNAV/VNAV DA	1263-1 3/8	493 (500-1 3/8)		NA
LNAV MDA	1240-1	470 (500-1)	1240-1 3/8 470 (500-1 3/8)	NA
CIRCLING	1460-1 670 (700-1)	1520-1 730 (800-1)	1720-2 3/4 930 (1000-2 3/4)	NA

NE-2, 11 JUN 2026 to 09 JUL 2026

NE-2, 11 JUN 2026 to 09 JUL 2026