

|  |                        |                             |   |
|--|------------------------|-----------------------------|---|
| WAAS<br>CH <b>50115</b><br><b>W11A</b> | APP CRS<br><b>106°</b> | Rwy Ldg<br>TDZE<br>Apt Elev | <b>7504</b><br><b>147</b><br><b>151</b> |
|--|------------------------|-----------------------------|---|

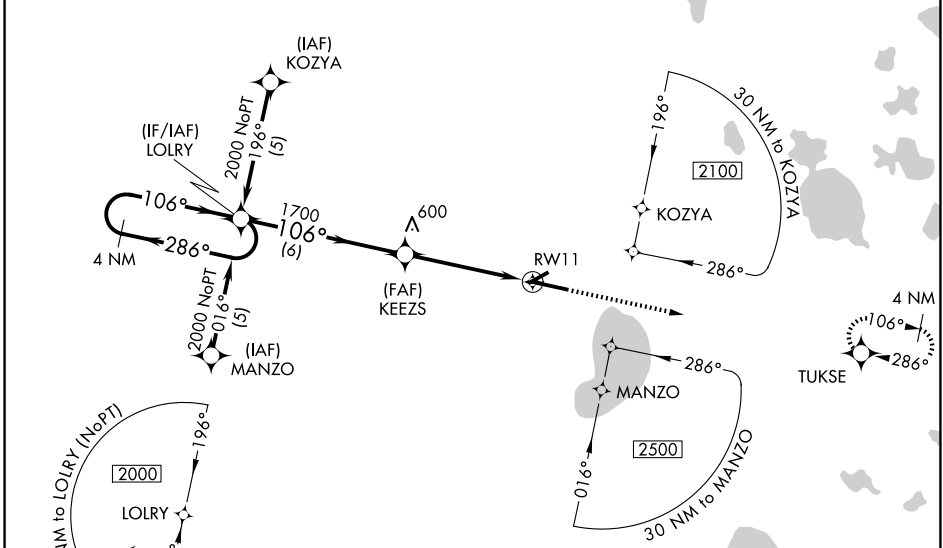
# RNAV (GPS) RWY 11

GAINESVILLE RGNL (GNTV)

**⚠** For uncompensated Baro-VNAV systems, LNAV/VNAV NA below -15° C (5° F) or above 48° C (120° F). DME/DME RNP-0.3 NA. When local altimeter setting not received, use Ocala Intl-Jim Taylor Fld altimeter setting and increase LPV DA to 541 feet and all Cats visibility ½ SM; increase LNAV/VNAV DA to 681 feet and all Cats visibility ½ SM; increase all MDAs 100 feet and increase LNAV Cat C/D and Circling Cat C visibility ¼ SM and Circling Cat D ½ SM. Visibility reduction by helicopters NA. Baro-VNAV NA when using Ocala Intl-Jim Taylor Fld altimeter setting. When VGSI inoperative, Circling Rwy 25 NA at night. VDP NA when using Ocala Intl-Jim Taylor Fld altimeter setting.

MISSED APPROACH: Climb to 2000 direct TUKSE and hold.

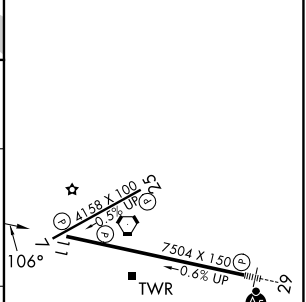
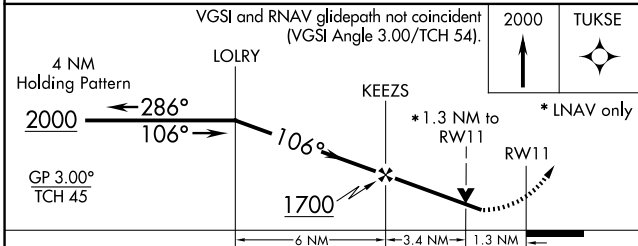
|                       |   |  |                         |                         |
|-----------------------|---|--|-------------------------|-------------------------|
| ATIS<br><b>127.15</b> | JACKSONVILLE APP CON<br><b>118.175 338.25</b> | GAINESVILLE TOWER★<br><b>119.55 (CTAF) 0 353.7</b> | GND CON<br><b>121.7</b> | UNICOM<br><b>122.95</b> |
|-----------------------|---|--|-------------------------|-------------------------|



SE-3, 11 JUN 2026 to 09 JUL 2026

SE-3, 11 JUN 2026 to 09 JUL 2026

|          |          |
|----------|----------|
| ELEV 151 | TDZE 147 |
|----------|----------|



| CATEGORY     | A                    | B                    | C                      | D                    |
|--------------|----------------------|----------------------|------------------------|----------------------|
| LPV DA       | 460-1 313 (400-1)    |                      |                        |                      |
| LNAV/DA VNAV | 600-1½ 453 (500-1½)  |                      |                        |                      |
| LNAV MDA     | 600-1 453 (500-1)    |                      | 600-1½ 453 (500-1½)    |                      |
| CIRCLING     | 620-1<br>469 (500-1) | 700-1<br>549 (600-1) | 760-1¾<br>609 (700-1¾) | 820-2<br>669 (700-2) |

