

WAAS CH 60916 W29A	APP CRS 286°	Rwy Ldg TDZE Apt Elev	7504 122 151
--	------------------------	-----------------------------	---

RNAV (GPS) RWY 29

GAINESVILLE RGNL (G.V.)

RNP APCH - GPS.

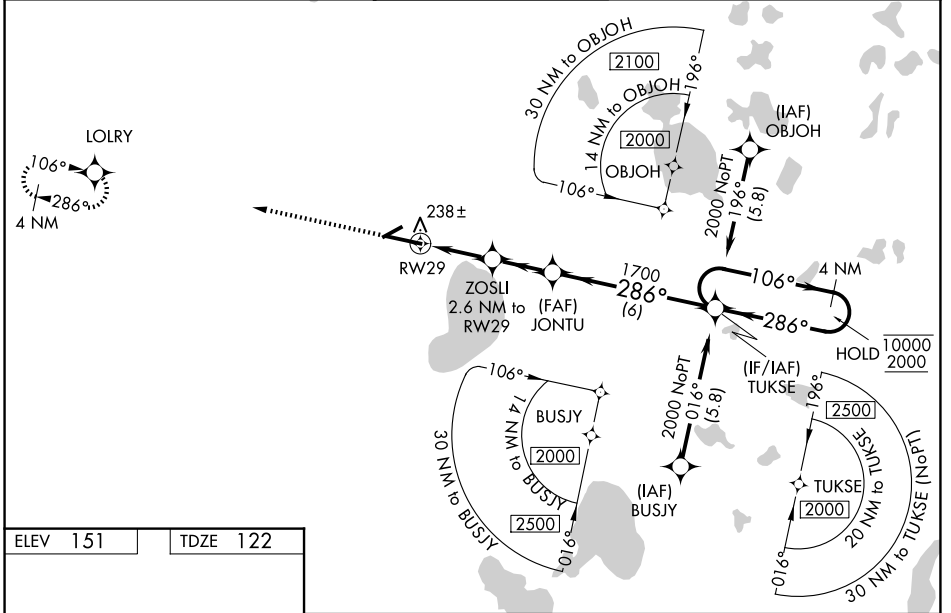
⚠ For uncompensated Baro-VNAV systems, LNAV/VNAV NA below -3°C or above 54°C.
 ⚠ Baro-VNAV and VDP NA when using OCF altimeter setting. When local altimeter setting not received, use OCF altimeter setting and increase LPV DA to 403 feet; increase LNAV/VNAV DA to 488 feet and all visibilities to RVR 3500. Increase all MDAs 100 feet and LNAV visibility Cat C/D to RVR 5000, and Circling visibility Cat C/D ½ SM. For inop ALS, increase LNAV/VNAV all Cats visibility to RVR 4500 and LNAV Cats C and D visibility to RVR 5500. For inop ALS when using OCF altimeter setting, increase LPV all Cats visibility to RVR 4500, LNAV/VNAV all Cats visibility to RVR 5500, and LNAV visibility Cat C/D to 1 ½ SM.

MALSR

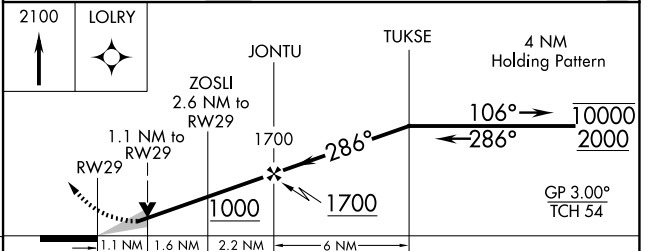
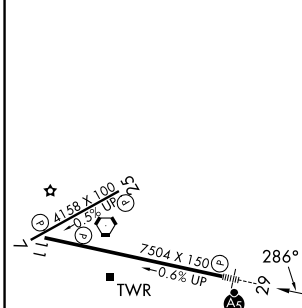


MISSED APPROACH:
Climb to 2100 direct
LOLRY and hold.

ATIS 127.15	JACKSONVILLE APP CON 118.175 338.25	GAINESVILLE TOWER ★ 119.55 (CTAF) 0 353.7	GND CON 121.7	UNICOM 122.95
-----------------------	---	---	-------------------------	-------------------------



ELEV 151	TDZE 122
----------	----------



CATEGORY	A	B	C	D
LPV DA		322/24	200 (200-½)	
LNAV/VNAV DA		407/24	285 (300-½)	
LNAV MDA	500/24	378 (400-½)	500/35	378 (400-½)
CIRCLING	620-1 469 (500-1)	700-1 549 (600-1)	760-1¾ 609 (700-1¾)	820-2 669 (700-2)

REIL Rwy 11
MIRL Rwy 7-25
HIRL Rwy 11-29

SE-3, 11 JUN 2026 to 09 JUL 2026

SE-3, 11 JUN 2026 to 09 JUL 2026