

APP CRS	Rwy Ldg	4158
065°	TDZE	151
	Apt Elev	151

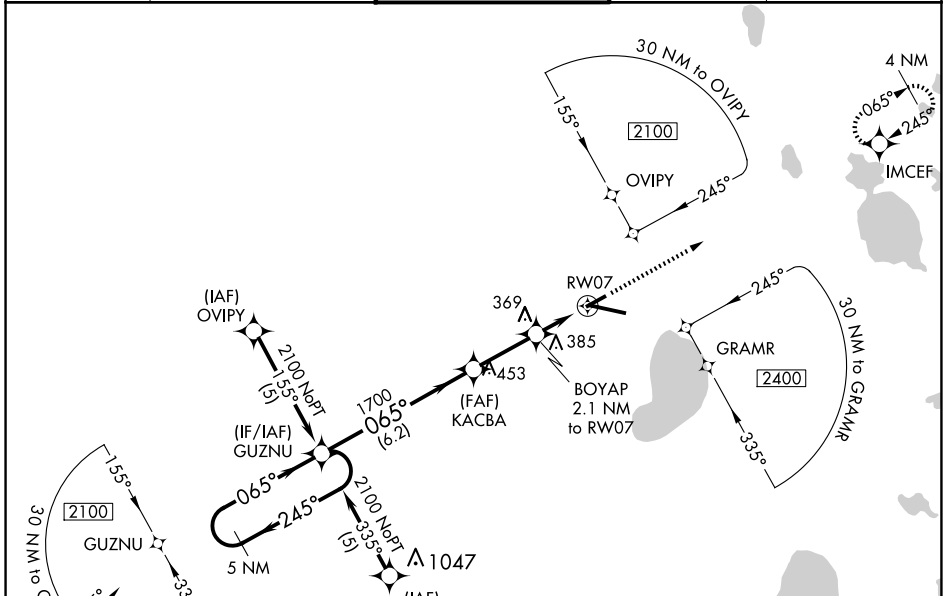
RNAV (GPS) RWY 7

GAINESVILLE RGNL (G.N.V)

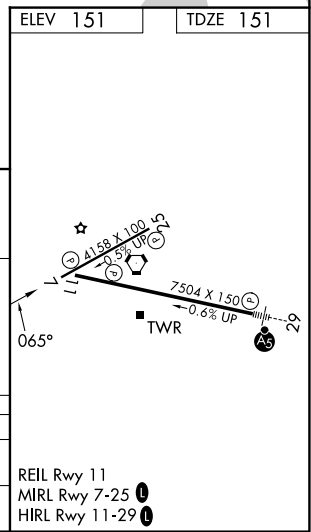
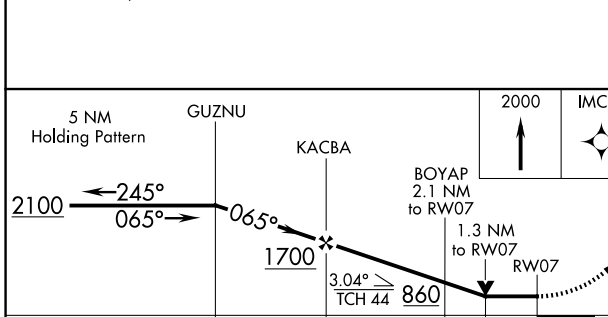
⚠ DME/DME RNP-0.3 NA. Visibility reduction by helicopters NA. VDP NA when using Ocala Intl-Jim Taylor Fld altimeter setting. When local altimeter setting not received, use Ocala Intl-Jim Taylor Fld altimeter setting; increase all MDAs 100 feet and increase LNAV Cat C/D and Circling Cat C visibility ¼ SM and Circling Cat D ½ SM. When VGSI inoperative, Circling Rwy 25 NA at night.

MISSED APPROACH: Climb to 2000 direct IMCEF and hold.

ATIS 127.15	JACKSONVILLE APP CON 118.175 338.25	GAINESVILLE TOWER★ 119.55 (CTAF) 0 353.7	GND CON 121.7	UNICOM 122.95
-----------------------	---	--	-------------------------	-------------------------



ELEV	151	TDZE	151
------	-----	------	-----



CATEGORY	A	B	C	D
LNAV MDA	620-1 469 (500-1)	620-1¼ 469 (500-1¼)	620-1½ 469 (500-1½)	620-1¾ 469 (500-1¾)
CIRCLING	620-1 469 (500-1)	700-1 549 (600-1)	760-1¾ 609 (700-1¾)	820-2 669 (700-2)

SE-3, 11 JUN 2026 to 09 JUL 2026

SE-3, 11 JUN 2026 to 09 JUL 2026