

WAAS CH <b>82615</b> <b>W30A</b>	APP CRS <b>305°</b>	Rwy Ldg TDZE Apt Elev	<b>5301</b> <b>1142</b> <b>1156</b>
----------------------------------------	------------------------	-----------------------------	-------------------------------------------

# RNAV (GPS) RWY 30

FORT DODGE RGNL (FOD)

RNP APCH.

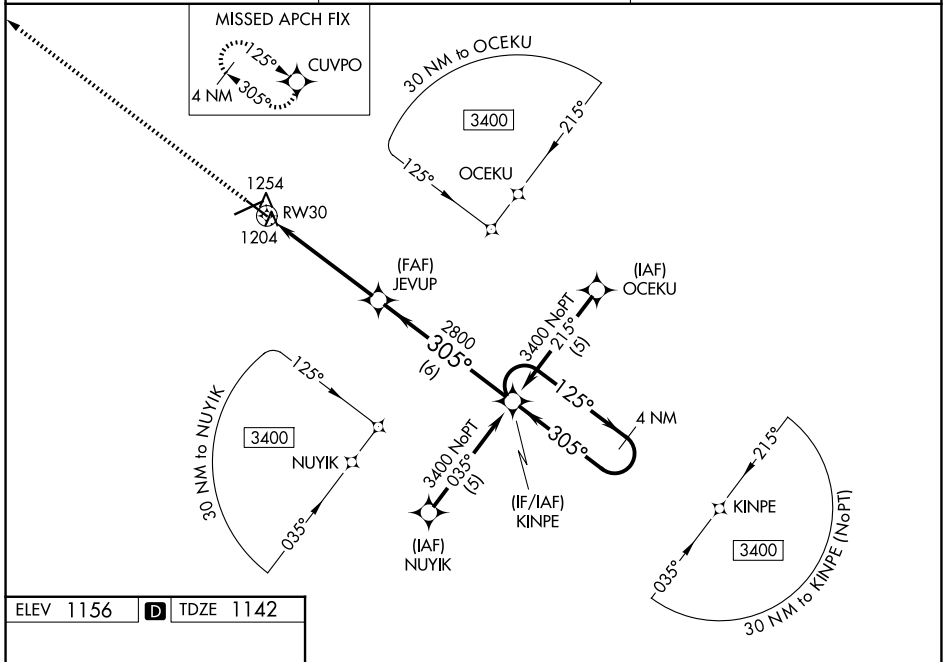
▼ For uncompensated Baro-VNAV systems, LNAV/VNAV NA below -17°C or above 54°C.  
 ▲ Helicopter visibility reduction below ¼ SM NA. VDP and Baro-VNAV NA when using Webster City altimeter setting. When local altimeter setting not received, use Webster City altimeter setting: increase LPV DA to 1466 feet and all Cats visibility ¼ SM; increase LNAV/VNAV DA to 1516 feet; increase all MDA 60 feet and LNAV Cats C/D and Circling Cat C visibility ¼ SM.

MISSED APPROACH: Climb to 3400 direct CUVPO and hold.

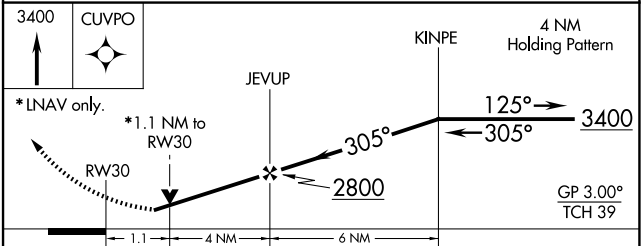
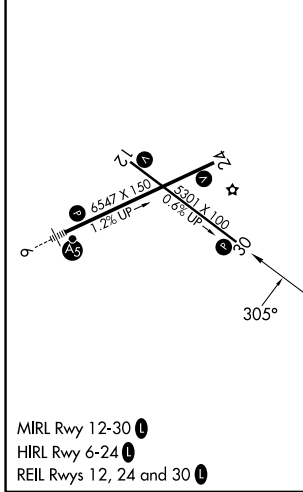
AWOS-3PT  
**118.775**

MINNEAPOLIS CENTER  
**134.0 288.3**

UNICOM  
**123.0 (CTAF) 0**



ELEV 1156	<b>D</b>	TDZE 1142
-----------	----------	-----------



CATEGORY	A	B	C	D
LPV DA		1424-1	282 (300-1)	
LNAV/VNAV DA		1474-1¼	332 (400-1¼)	
LNAV MDA		1520-1	378 (400-1)	1520-1¼ 378 (400-1¼)
CIRCLING	1560-1 404 (500-1)	1620-1 464 (500-1)	1740-1½ 584 (600-1½)	2080-3 924 (1000-3)

NC-3, 11 JUN 2026 to 09 JUL 2026

NC-3, 11 JUN 2026 to 09 JUL 2026