

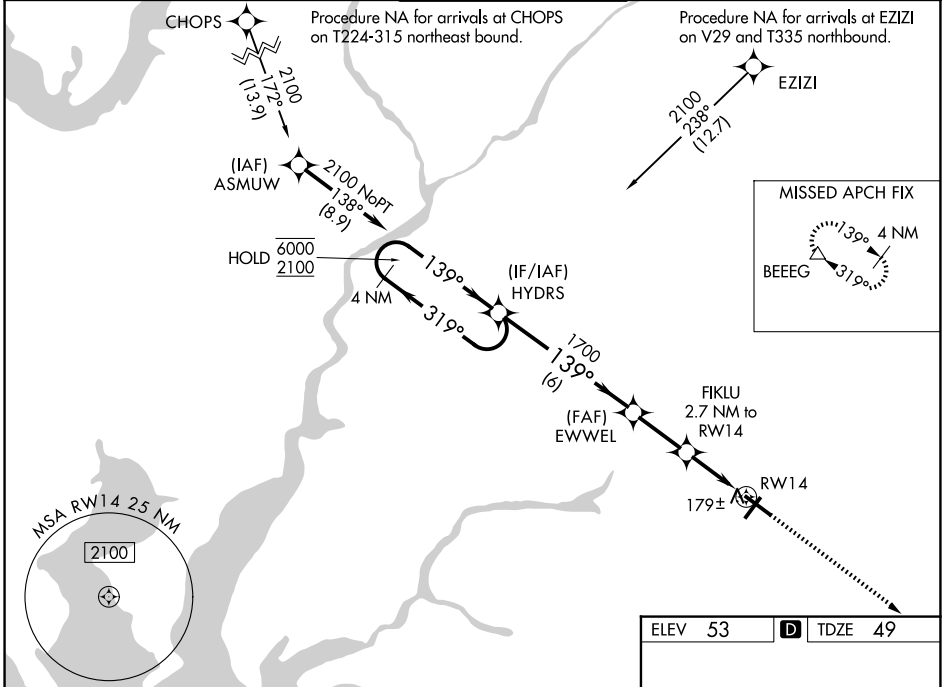
WAAS CH <b>56320</b> <b>W14A</b>	APP CRS <b>139°</b>	Rwy Ldg TDZE Apt Elev	<b>6400</b> <b>49</b> <b>53</b>
--	------------------------	-----------------------------	---------------------------------------

# RNAV (GPS) RWY 14

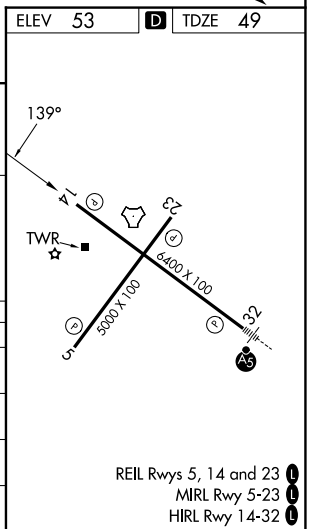
SALISBURY-OCEAN CITY WICOMICO RGNL (SBY)

RNP APCH - GPS.		MISSED APPROACH: Climb to 2000 direct BEEEG and hold.	
<b>T</b>	Rwy 14 helicopter visibility reduction below 3/4 SM NA. For uncompensated Baro-VNAV systems, LNAV/VNAV NA below -9° C or above 54° C.		

ASOS <b>118.325</b>	PATUXENT APP CON * <b>127.95 314.0</b>	SALISBURY TOWER * <b>119.425 (CTAF) 0</b>	GND CON <b>123.775</b>	UNICOM <b>122.95</b>
------------------------	---	--	---------------------------	-------------------------



4 NM Holding Pattern		HYDRS	EWWEL	FIKLU 2.7 NM to RW14	2000	BEEEG
6000	← 319°	→ 139°	1700	1.1 NM to RW14	↑	△
2100			1700	1.6 NM		
GP 3.00°			940	1.1 NM		
TCH 45						
		6 NM	2.4 NM	1.6 NM	1.1 NM	
CATEGORY	A	B	C	D		
LPV DA		299-3/4	250 (300-3/4)			
LNAV/VNAV DA		436-1 1/8	387 (400-1 1/8)			
LNAV MDA	440-1	391 (400-1)	440-1 1/8	391 (400-1 1/8)		
CIRCLING	480-1 427 (500-1)	520-1 467 (500-1)	560-1 1/2 507 (600-1 1/2)	700-2 647 (700-2)		



NE-3, 11 JUN 2026 to 09 JUL 2026

NE-3, 11 JUN 2026 to 09 JUL 2026