

WAAS CH <b>78018</b> <b>W23A</b>	APP CRS <b>229°</b>	Rwy Ldg <b>5000</b> TDZE <b>49</b> Apt Elev <b>53</b>
--	------------------------	---

# RNAV (GPS) RWY 23

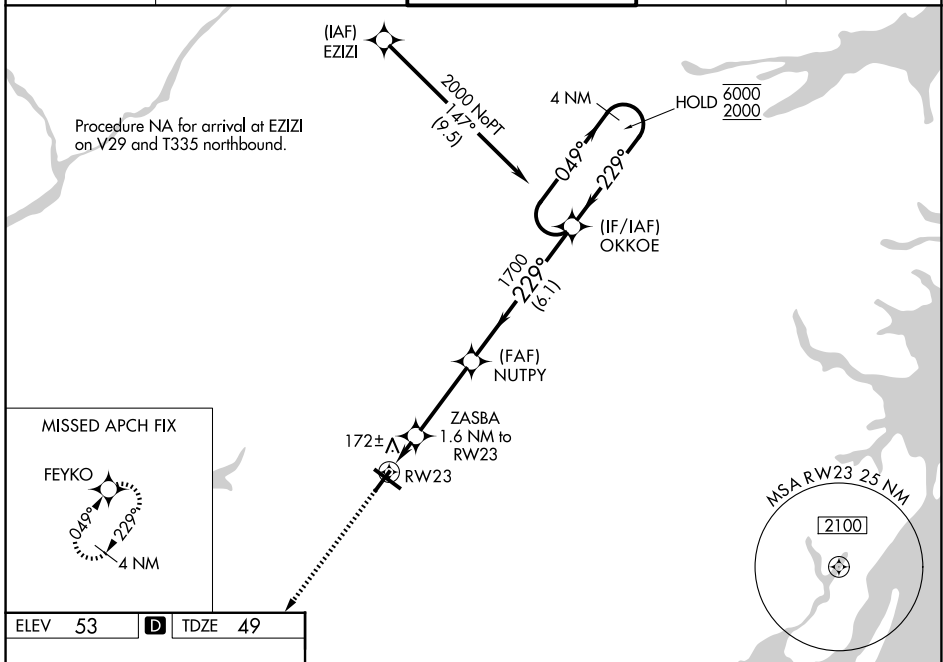
SALISBURY-OCEAN CITY WICOMICO RGNL (SBY)

RNP APCH - GPS.

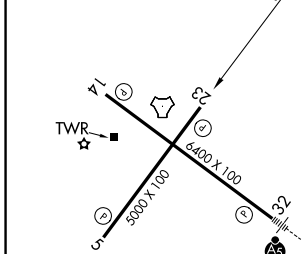
**⚠** Rwy 23 helicopter visibility reduction below 3/4 SM NA. For uncompensated Baro-VNAV systems, LNAV/VNAV NA below -9°C or above 54°C.

**MISSED APPROACH:**  
Climb to 2000 direct FEYKO and hold.

ASOS <b>118.325</b>	PATUXENT APP CON ★ <b>127.95 314.0</b>	SALISBURY TOWER ★ <b>119.425 (CTAF) 0</b>	GND CON <b>123.775</b>	UNICOM <b>122.95</b>
------------------------	---	--	---------------------------	-------------------------



ELEV 53	<b>D</b>	TDZE 49
---------	----------	---------



2000	FEYKO	VGSI and RNAV glidepath not coincident (VGSI Angle 3.00/TCH 45).	4 NM Holding Pattern
		NUTPY	OKKOE
		ZASBA 1.6 NM to RWY23	
		1700	
		229°	049°
		6000	2000
		GP 3.04° TCH 51	
		1700	
		600	
		1.1 NM to RWY23	
		0.5	
		3.4 NM	
		6.1 NM	
		1.1 NM	

CATEGORY	A	B	C	D
LPV DA		374-1	325 (400-1)	
LNAV/VNAV DA		451-1 1/8	402 (400-1 1/8)	
LNAV MDA	440-1	391 (400-1)	440-1 1/8	391 (400-1 1/8)
CIRCLING	480-1 427 (500-1)	520-1 467 (500-1)	560-1 1/2 507 (600-1 1/2)	700-2 647 (700-2)

REIL Rwy 5, 14 and 23 **0**  
MIRL Rwy 5-23 **0**  
HIRL Rwy 14-32 **0**

NE-3, 11 JUN 2026 to 09 JUL 2026

NE-3, 11 JUN 2026 to 09 JUL 2026