

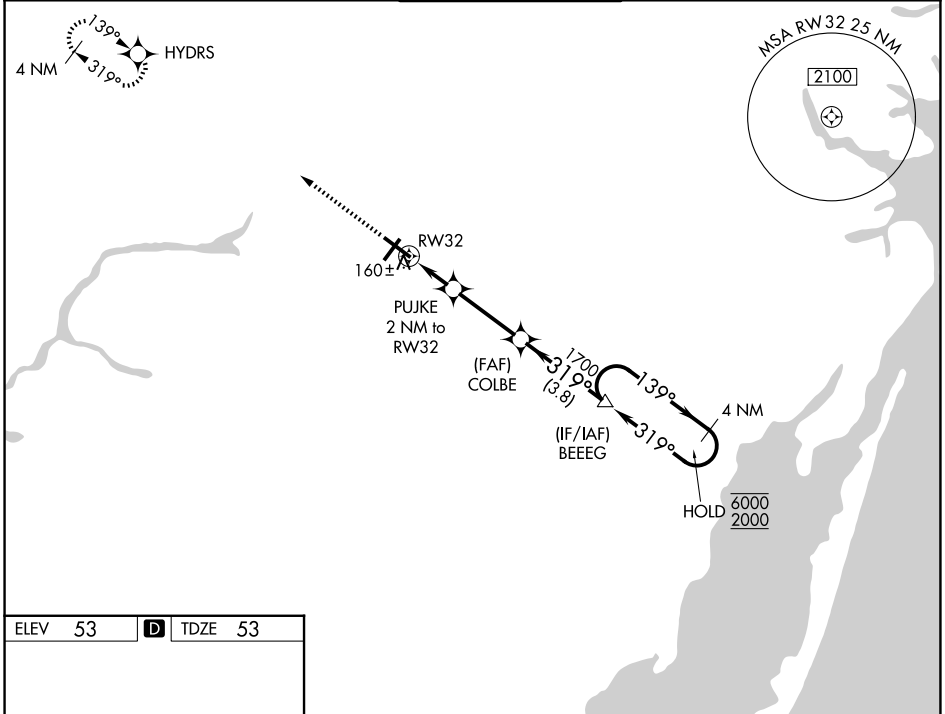
WAAS CH <b>48912</b> <b>W32A</b>	APP CRS <b>319°</b>	Rwy Ldg TDZE Apt Elev	<b>6400</b> <b>53</b> <b>53</b>
--	------------------------	-----------------------------	---------------------------------------

# RNAV (GPS) RWY 32

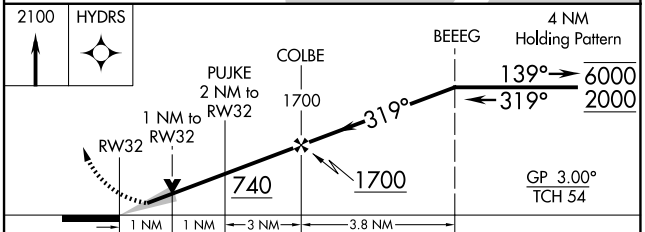
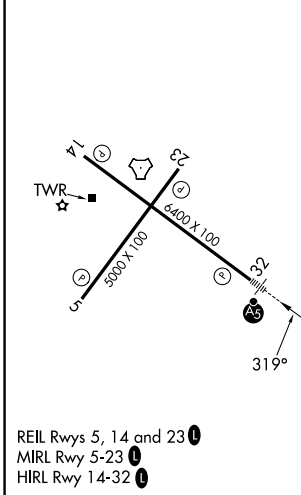
SALISBURY-OCEAN CITY WICOMICO RGNL (SBY)

RNP APCH - GPS.		MALS R	MISSED APPROACH: Climb to 2100 direct HYDRS and hold.
<p><b>⚠</b> For uncompensated Baro-VNAV systems, LNAV/VNAV NA below -9°C or above 54°C. For inop ALS, increase LNAV/VNAV all Cats visibility to 1½ SM and LNAV Cat C and D visibility to 1 SM.</p>			

ASOS <b>118.325</b>	PATUXENT APP CON * <b>127.95 314.0</b>	SALISBURY TOWER * <b>119.425 (CTAF) 0</b>	GND CON <b>123.775</b>	UNICOM <b>122.95</b>
------------------------	---	--	---------------------------	-------------------------



ELEV 53	<b>D</b>	TDZE 53
---------	----------	---------



CATEGORY	A	B	C	D
LPV DA		253-½	200 (200-½)	
LNAV/VNAV DA		458-¾	405 (500-¾)	
LNAV MDA	420-½	367 (400-½)	420-⅝	367 (400-⅝)
CIRCLING	480-1 427 (500-1)	520-1 467 (500-1)	560-1½ 507 (600-1½)	700-2 647 (700-2)

NE-3, 11 JUN 2026 to 09 JUL 2026

NE-3, 11 JUN 2026 to 09 JUL 2026