

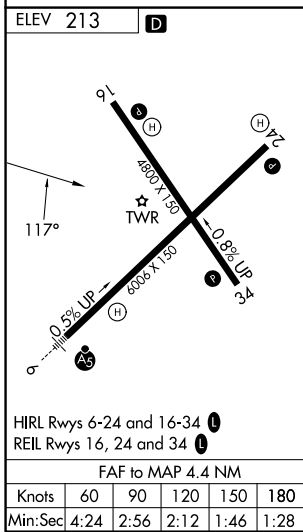
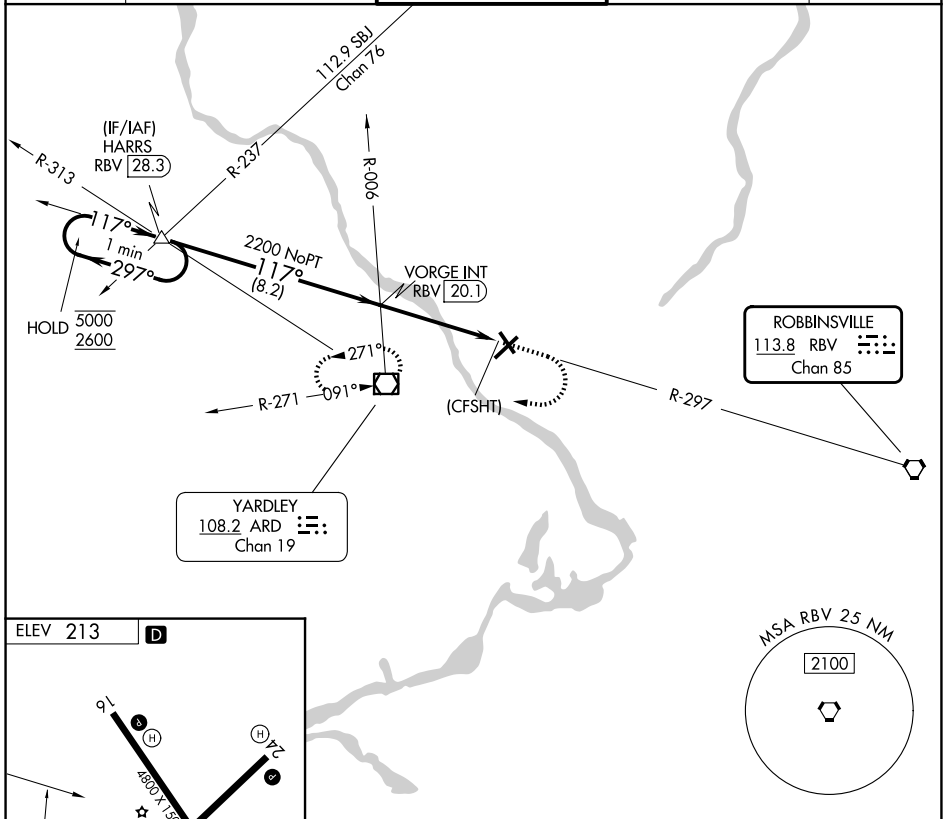
VORTAC RBV 113.8 Chan 85	APP CRS 117°	Rwy Ldg TDZE Apt Elev N/A N/A 213
--	------------------------	--

VOR-A
TRENTON MERCER (TTN)

▼ Rwy 34 helicopter visibility reduction below 1 SM NA. When Circling to Rwy 34 at night, operational VGSI required, remain at or above VGSI glidepath until threshold. When local altimeter setting not received, use PNE altimeter setting and increase all MDAs 60 feet and visibility Cat C/D ¼ SM.

MISSED APPROACH: Climb to 1540 then climbing right turn to 2000 direct ARD VOR/DME and hold.

ATIS 126.775	PHILADELPHIA APP CON 123.8 291.7	TRENTON TOWER ★ 120.7 (CTAF) 0 257.8	GND CON 121.9 257.8	UNICOM 122.95
------------------------	--	--	-------------------------------	-------------------------



1540	2000	ARD	One Minute Holding Pattern	
VORGE INT RBV 20.1			HARRS RBV 28.3	297° → 5000
(CFSHT)			← 117°	2600
4.4 NM		8.2 NM		
CATEGORY	A	B	C	D
CIRCLING	940-1	727 (800-1)	940-2 727 (800-2)	980-2½ 767 (800-2½)

NE-2, 11 JUN 2026 to 09 JUL 2026

NE-2, 11 JUN 2026 to 09 JUL 2026