

LOC/DME I-MVP <b>111.55</b> Chan 52 (Y)	APP CRS <b>196°</b>	Rwy Ldg TDZE Apt Elev	<b>7302</b> <b>1320</b> <b>1333</b>
---	------------------------	-----------------------------	---

# ILS or LOC RWY 19L

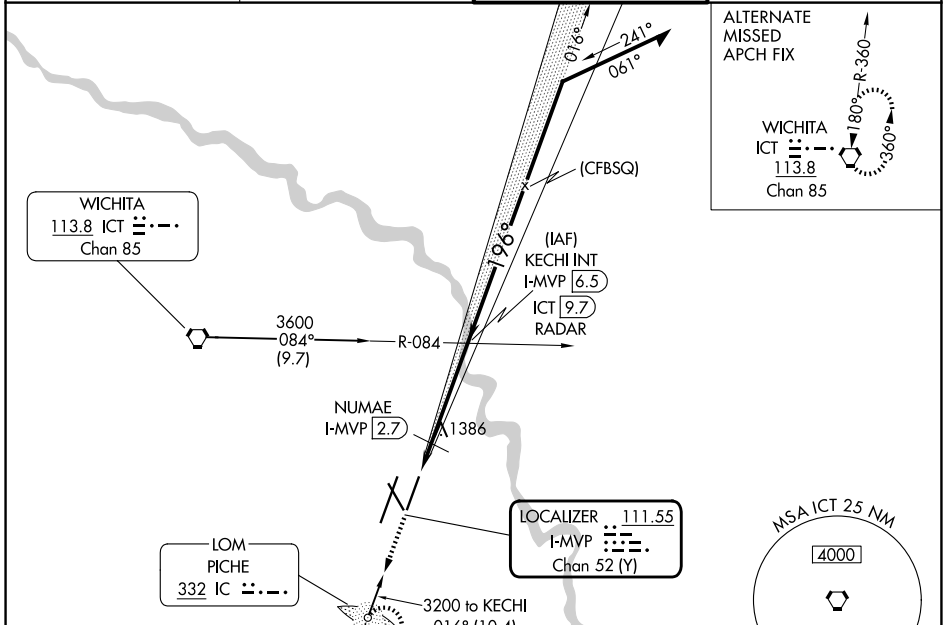
WICHITA DWIGHT D EISENHOWER NTL (ICT)

**⚠** ADF required. Simultaneous approach authorized with ILS or LOC RWY 19R. For inoperative MALS, increase S-ILS 19L Cat E visibility to 3/4 mile, S-LOC 19L Cat E visibility to 1 1/8 mile, NUMAE fix minimums: S-LOC 19L Cat C/D/E visibility to 1 mile.

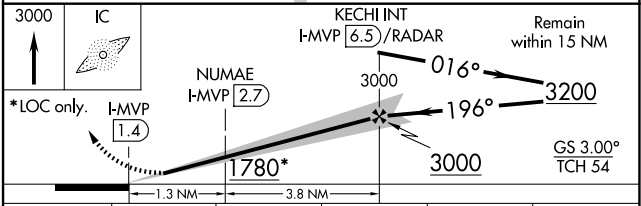
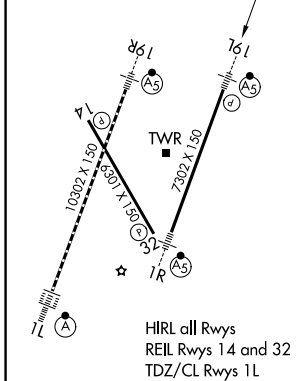
**MALS**

**MISSED APPROACH:** Climb to 3000 direct PICHE LOM and hold.

ATIS <b>125.15</b>	WICHITA APP CON <b>126.7 353.5</b>	WICHITA TOWER <b>118.2 257.8</b>	GND CON <b>121.9 348.6</b>
-----------------------	---------------------------------------	-------------------------------------	-------------------------------



ELEV 1333	<b>D</b>	TDZE 1320
-----------	----------	-----------



CATEGORY	A	B	C	D	E
S-ILS 19L	1520-1/2 200 (200-1/2)				
S-LOC 19L	1780-1/2	460 (500-1/2)	1780-7/8 460 (500-7/8)		
CIRCLING	1800-1	467 (500-1)	1980-1 3/4 647 (700-1 3/4)	1980-2 647 (700-2)	2000-2 1/4 667 (700-2 1/4)
NUMAE FIX MINIMUMS (DME REQUIRED)					
S-LOC 19L	1700-1/2	380 (400-1/2)	1700-5/8 380 (400-5/8)		
CIRCLING	1800-1	467 (500-1)	1980-1 3/4 647 (700-1 3/4)	1980-2 647 (700-2)	2000-2 1/4 667 (700-2 1/4)

FAF to MAP 5.1 NM

Knots	60	90	120	150	180
Min:Sec	5:06	3:24	2:33	2:02	1:42

NC-2, 11 JUN 2026 to 09 JUL 2026

NC-2, 11 JUN 2026 to 09 JUL 2026