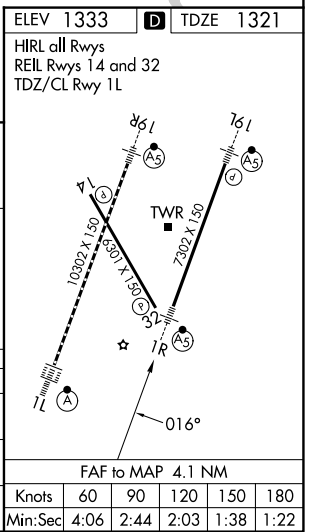
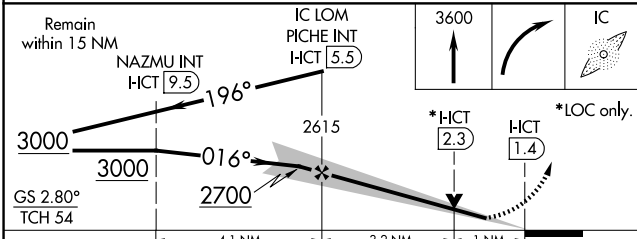
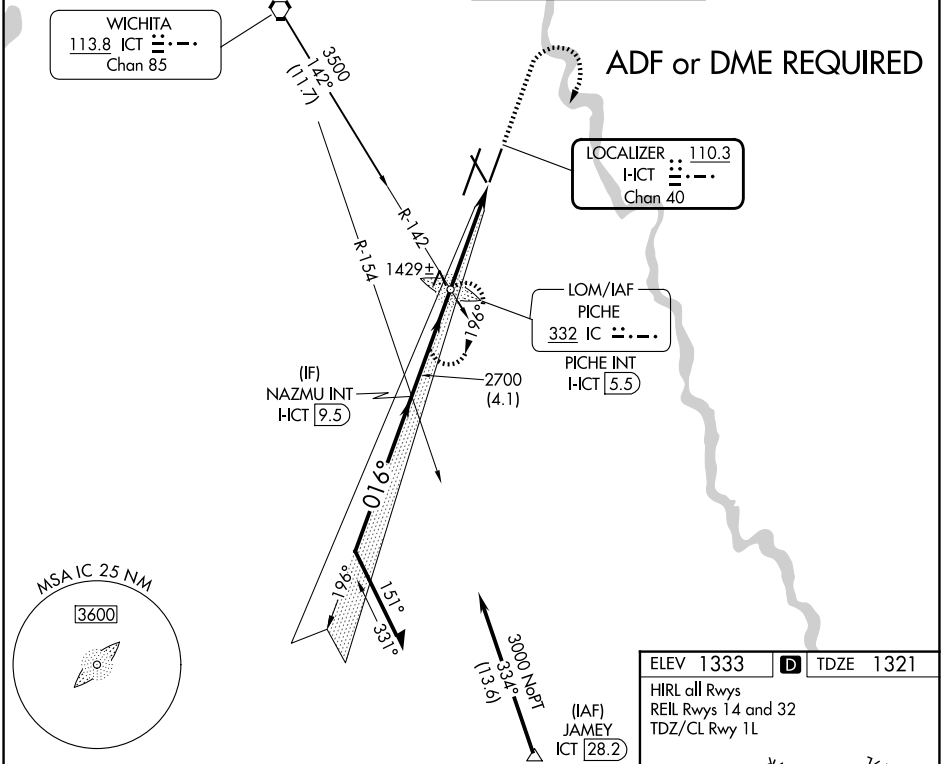


LOC/DME HCT <b>110.3</b> Chan 40	APP CRS <b>016°</b>	Rwy Ldg TDZE Apt Elev	<b>7302</b> <b>1321</b> <b>1333</b>
--	------------------------	-----------------------------	---

# ILS or LOC RWY 1R

WICHITA DWIGHT D EISENHOWER NTL (ICT)

<p><b>▽</b> Simultaneous approach authorized with Rwy 1L. <b>△</b> ADF or DME required. #RVR 1800 authorized with the use of FD or AP or HUD to DA.</p>	<p>MALSR </p>	<p>MISSED APPROACH: Climb to 3600 then right turn direct PICHE LOM/INT/H-ICT 5.5 DME and hold.</p>	
<p>ATIS <b>125.15</b></p>	<p>WICHITA APP CON <b>126.7 353.5</b></p>	<p>WICHITA TOWER <b>118.2 257.8</b></p>	<p>GND CON <b>121.9 348.6</b></p>



CATEGORY	A	B	C	D	E
S-ILS 1R#	1521/24 200 (200-½)				
S-LOC 1R	1680/24	359 (400-½)	1680/40	359 (400-¾)	
CIRCLING	1800-1	467 (500-1)	1980-1¾ 647 (700-1¾)	1980-2 647 (700-2)	2000-2¼ 667 (700-2¼)

NC-2, 11 JUN 2026 to 09 JUL 2026

NC-2, 11 JUN 2026 to 09 JUL 2026