

# RNAV (RNP) Z RWY 19R

WICHITA DWIGHT D EISENHOWER NTL (ICT)

APP CRS	Rwy Ldg	<b>10302</b>
<b>196°</b>	TDZE	<b>1330</b>
	Apt Elev	<b>1333</b>

▼ For uncompensated Baro-VNAV systems, procedure NA below -15°C (5°F) or above 54°C (130°F). For inoperative MALS, increase all Cats visibility to 1 1/4 mile. GPS required.

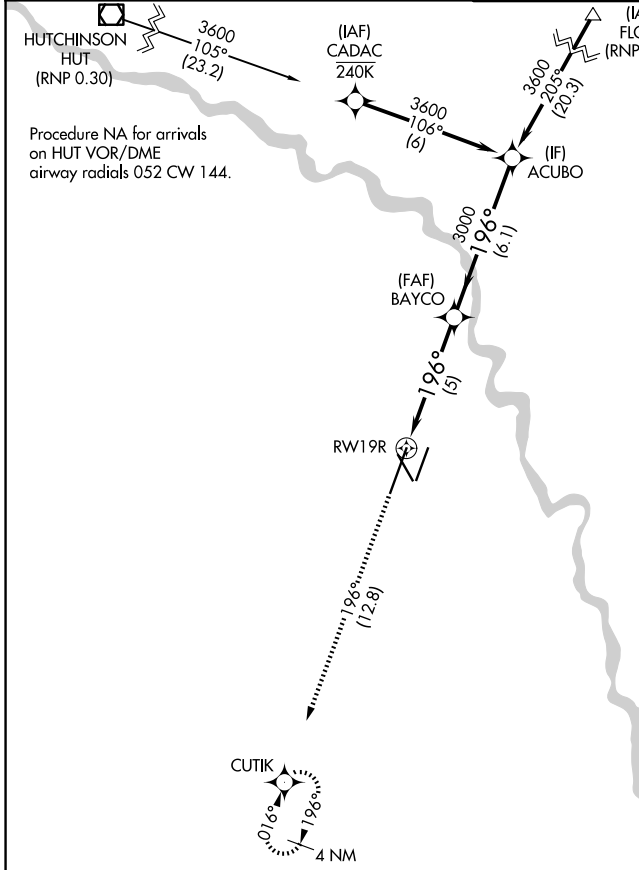
MALS R MISSED APPROACH: Climb to 4200 on track 196° to CUTIK and hold.

ATIS **125.15**

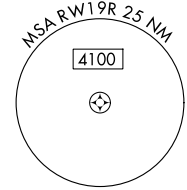
WICHITA APP CON **126.7 353.5**

WICHITA TOWER **118.2 257.8**

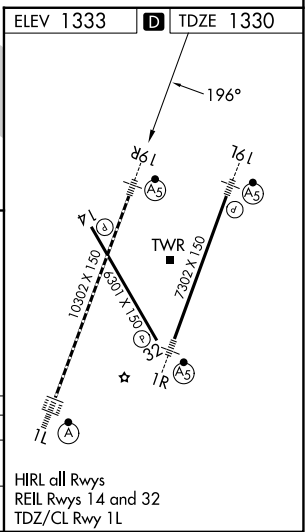
GND CON **121.9 348.6**



Procedure NA for arrivals at FLOSS on V77 northeast bound and V10-132-234-502 eastbound.



4200	CUTIK	BAYCO	ACUBO
↑ tr 196°		3000	3600
		196°	3600
		3000	GP 3.00° TCH 52
		5 NM	6.1 NM
CATEGORY	A	B	C
RNP 0.30 DA	1727/50 397 (400-1)		
<b>AUTHORIZATION REQUIRED</b>			



NC-2, 11 JUN 2026 to 09 JUL 2026

NC-2, 11 JUN 2026 to 09 JUL 2026