

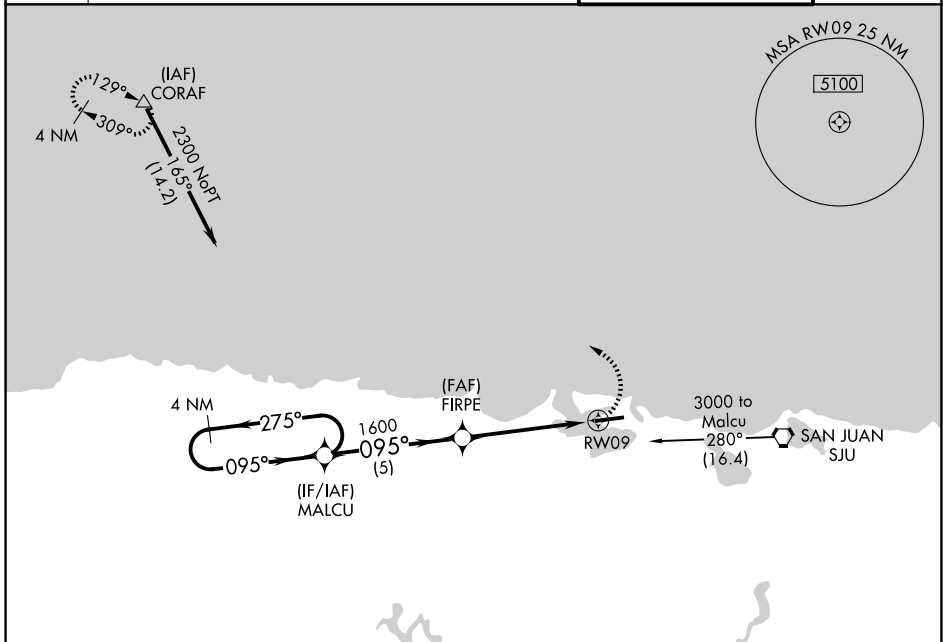
APP CRS <b>095°</b>	Rwy Ldg <b>5126</b>
	TDZE <b>10</b>
	Apt Elev <b>10</b>

# RNAV (GPS) RWY 9

FERNANDO LUIS RIBAS DOMINICCI (SIG) (TJIG)

RNP APCH.	Use Luis Munoz Marin Intl altimeter setting. Circling Rwy 27 NA at night. Rwy 9 helicopter visibility reduction below 3/4 SM NA.	MISSED APPROACH: Climbing left turn to 3000 direct CORAF WP and hold.
-----------	--	---

ATIS <b>120.4</b>	SAN JUAN APP CON <b>119.4 269.2</b> (W & SW) <b>120.9 290.2</b> (N & E)	ISLA GRANDE TOWER* <b>135.875</b> (CTAF) <b>298.85</b>	GND CON <b>121.7</b>
----------------------	--	---	-------------------------



SE-3, 11 JUN 2026 to 09 JUL 2026

SE-3, 11 JUN 2026 to 09 JUL 2026

ELEV	10	<b>D</b>	TDZE	10
------	----	----------	------	----

