

COPTER TACAN 004°

| | | |
|-----------------------------|-------------------------|--|
| TACAN NSE Chan 70 | APCH CRS 004° | Rwy Idg TDZE Arprt Elev 5996 N/A 177 |
|-----------------------------|-------------------------|--|

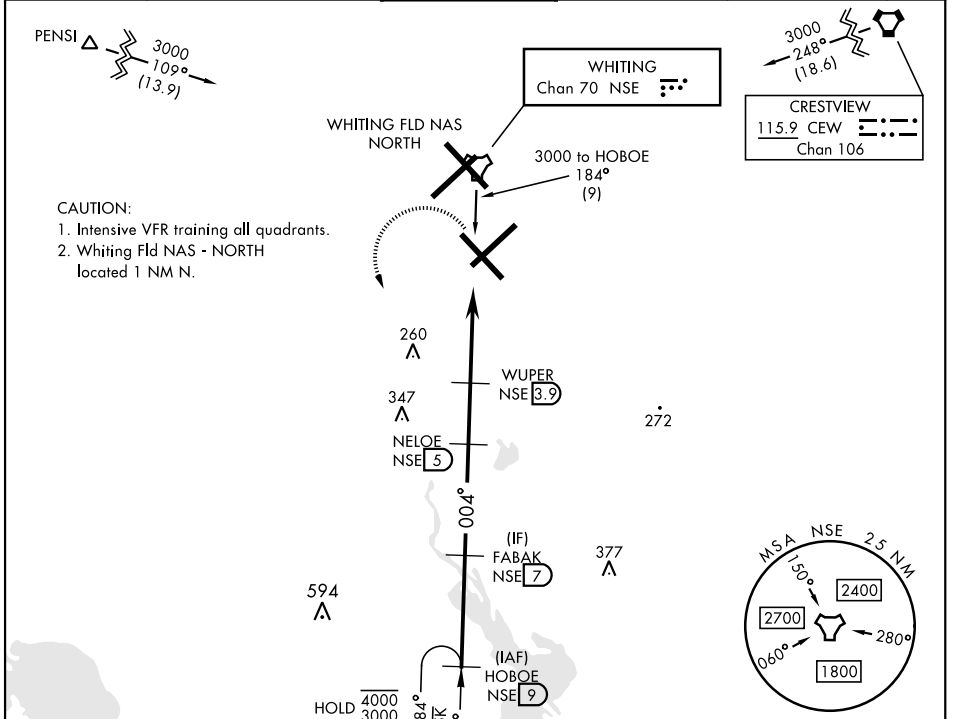
[USN]

WHITING FLD NAS - SOUTH (KNDZ)

▼ Maximum airspeed 90 KIAS.
Visibility reduction by helicopters NA.

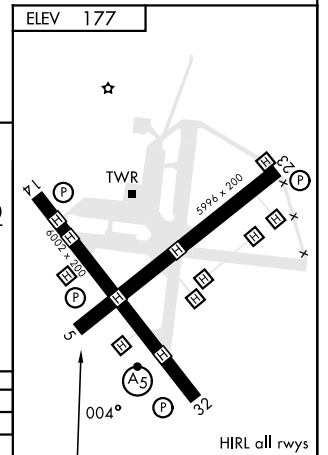
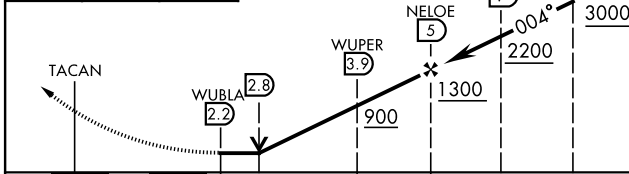
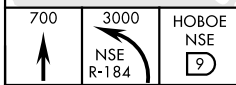
MISSED APPROACH: Climb to 700. Then climbing left turn to 3000. Intercept NSE TACAN R-184 to HOBEOE and hold. Contact Pensacola Approach Control.

| | | | | | |
|--------------------------|--|---|--------------------------|--------------------------|-------------|
| ATIS ★ 273.575 | PENSACOLA APP CON 124.85 235.775 | SOUTH WHITING TOWER ★ 123.075 348.675 | GND CON 317.65 | CLNC DEL 355.6 | ASR/ PAR |
|--------------------------|--|---|--------------------------|--------------------------|-------------|



CAUTION:
1. Intensive VFR training all quadrants.
2. Whiting Fld NAS - NORTH located 1 NM N.

EMERG SAFE ALT 100 NM 3500



| | | |
|----------|----------------|-------------|
| CATEGORY | COPTER | |
| H-004 | 560-1 | 390 (400-1) |
| CIRCLING | NOT AUTHORIZED | |

COPTER TACAN 004°

SE-3, 11 JUN 2026 to 09 JUL 2026

SE-3, 11 JUN 2026 to 09 JUL 2026