


MILTON, FLORIDA

ILS Y or LOC Y RWY 32

LOC/DME I-NDZ 110.55 Chan 42(Y)	APCH CRS 319°	Rwy Idg TDZE 172 Arprt Elev 177	6002
---	-------------------------	---	-------------

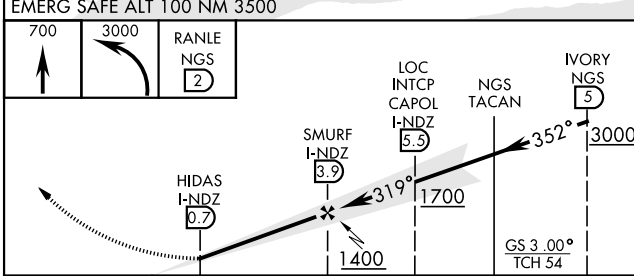
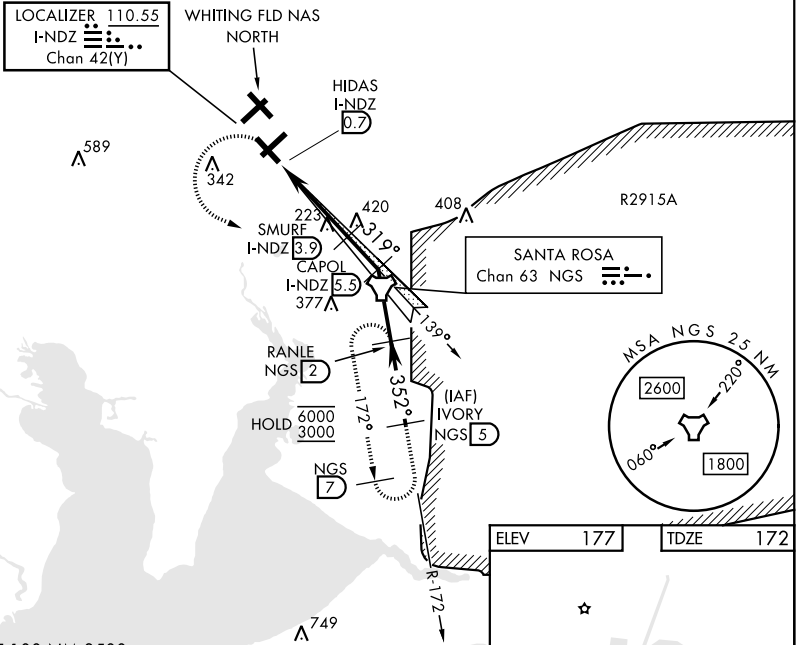
[USN]

WHITING FLD NAS - SOUTH (KNDZ)

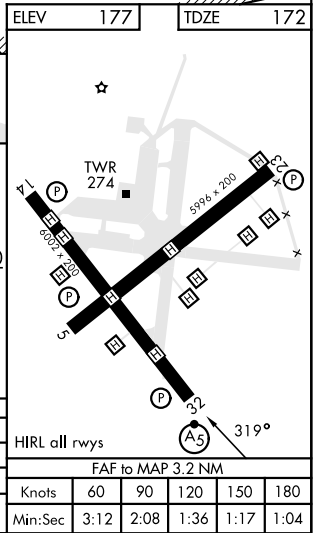
TACAN, DME, RADAR required.		MALSR 		MISSED APPROACH: Climb to 700, then climbing left turn to 3000 direct RANLE, continue climb in hold. Contact Pensacola Approach Control.	
-----------------------------	--	--	--	--	--

ATIS 273.575	PENSACOLA APP CON 124.85 235.775	SOUTH WHITING TOWER 123.075 348.675	GND CON 317.65	CLNC DEL 355.6	ASR/PAR
------------------------	--	---	--------------------------	--------------------------	---------

- CAUTION: 1. Intensive VFR student training all quadrants.
 2. Whiting FLD NAS - NORTH located 1 NM N.
 3. Inlmed seg len 1.7 NM less than minimum 2.2 NM.



EMERG SAFE ALT 100 NM 3500	700	3000	RANLE NGS 2	LOC INTCP CAPOL I-NDZ 5.5	IVORY NGS 5
	0.5 NM	3.2 NM			
CATEGORY	A	B	C	D	
S-ILS 32*		372-1/2	200	(200-1/2)	
S-LOC 32**	520-1/2	348 (400-1/2)	520-5/8	348 (400-5/8)	
CIRCLING***	580-1 403 (500-1)	640-1 463 (500-1)	660-1 1/2 483 (500-1 1/2)	760-2 583 (600-2)	



MILTON, FLORIDA
Amdt 1 10JUL25

30°42'N-87°01'W

WHITING FLD NAS - SOUTH (KNDZ)

ILS Y or LOC Y RWY 32

SE-3, 11 JUN 2026 to 09 JUL 2026

SE-3, 11 JUN 2026 to 09 JUL 2026