

RNAV (GPS) RWY 35

| | | |
|-------------|-----------|-------------|
| APCH CRS | Rwy Idg | 8001 |
| 346° | TDZE | 307 |
| | Arpt Elev | 322 |

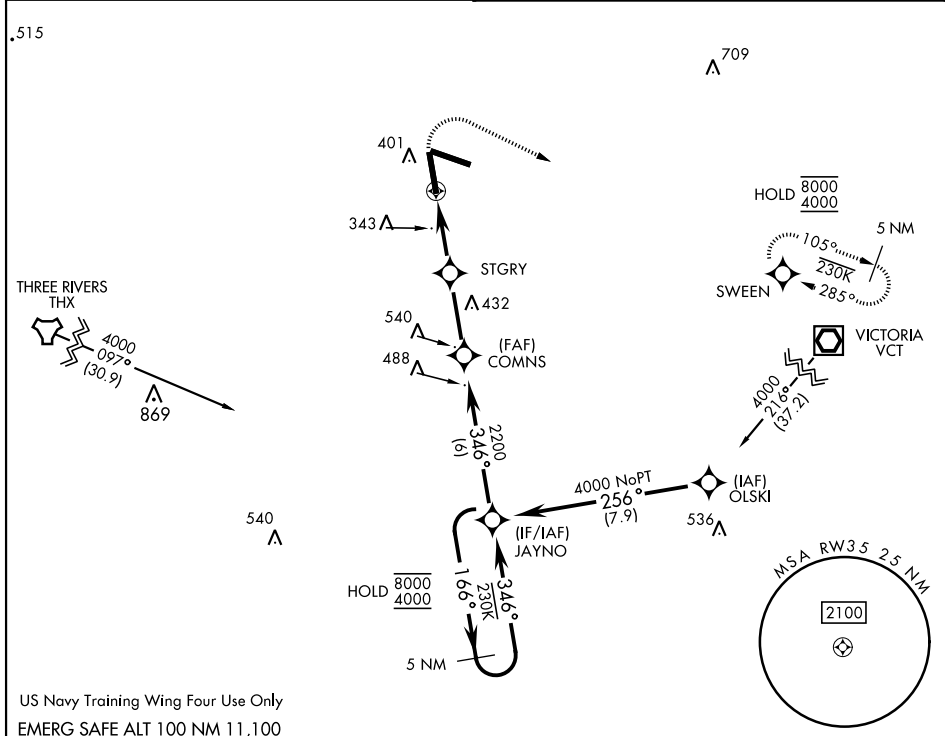
[USN]

GOLIAD NOLF (KNGT)

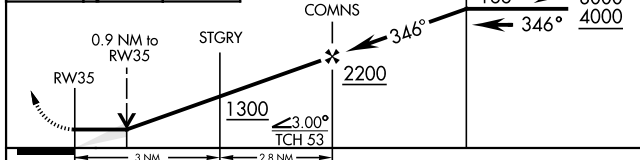
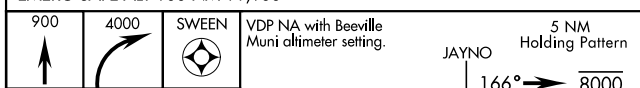
RNP APCH
When local altimeter setting not received, use Beeville Muni altimeter setting.

MISSED APPROACH: Climb to 900 then climbing right turn to 4000 direct SWEEN and hold, continue climb-in-hold to 4000.

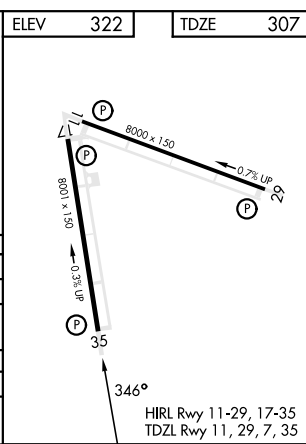
| | |
|------------------------|--------------------------------|
| ASOS 353.675 | CTAF 132.875 307.075 |
|------------------------|--------------------------------|



US Navy Training Wing Four Use Only
EMERG SAFE ALT 100 NM 11,100



| CATEGORY | A | B | C | D |
|--|----------------------|----------------------|------------------------|----------------------|
| LNAV MDA | 620-1 313 (300-1) | | | |
| CIRCLING | 760-1 438 (500-1) | 780-1 458 (500-1) | 780-1½ 458 (500-1½) | 880-2 558 (600-2) |
| BEEVILLE MUNI ALTIMETER SETTING MINIMA | | | | |
| LNAV MDA | 660-1 353 (400-1) | | | |
| CIRCLING | 800-1 478 (500-1) | 820-1 498 (500-1) | 820-1½ 498 (500-1½) | 880-2 558 (600-2) |



RNAV (GPS) RWY 35

SC-3, 11 JUN 2026 to 09 JUL 2026

SC-3, 11 JUN 2026 to 09 JUL 2026