

# COPTER RNAV (GPS) RWY 18

APCH CRS **178°**  
 Rwy Idg **2005**  
 TDZE **1091**  
 Arpt Elev **1091**

[USA]

MULDROW AHP (KHMY)

RNP APCH - GFS

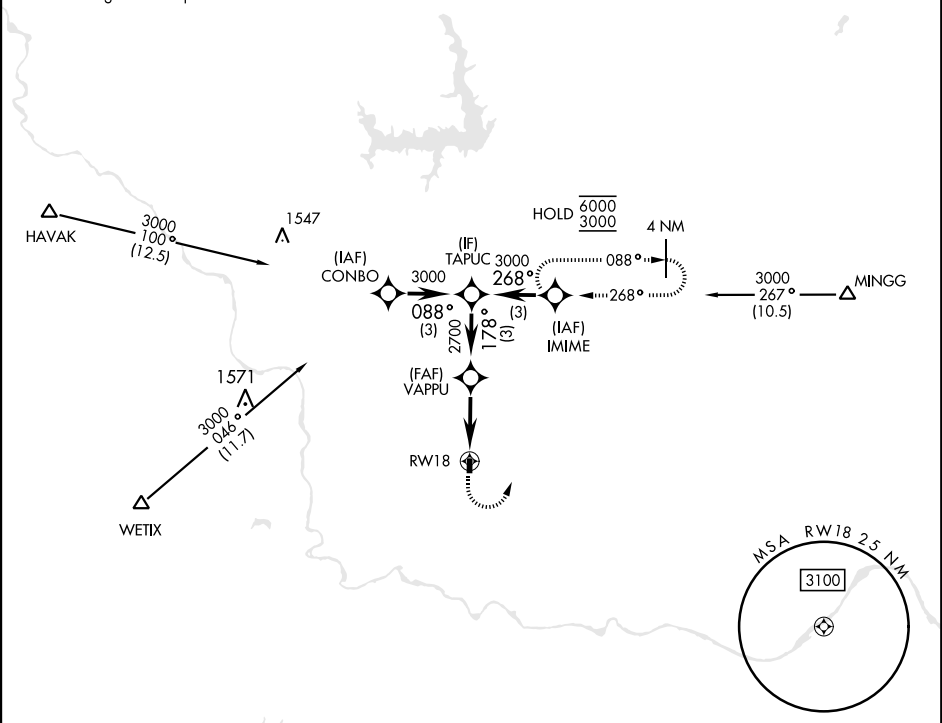
▼ Obtain local altimeter setting on CTAF; when not received, use University of Oklahoma Westheimer altimeter setting minimums.  
 ▲ NA

MISSED APPROACH: Climbing left turn to 3000 direct IMIME and hold.

OKE CITY APP CON  
**124.2 336.4**

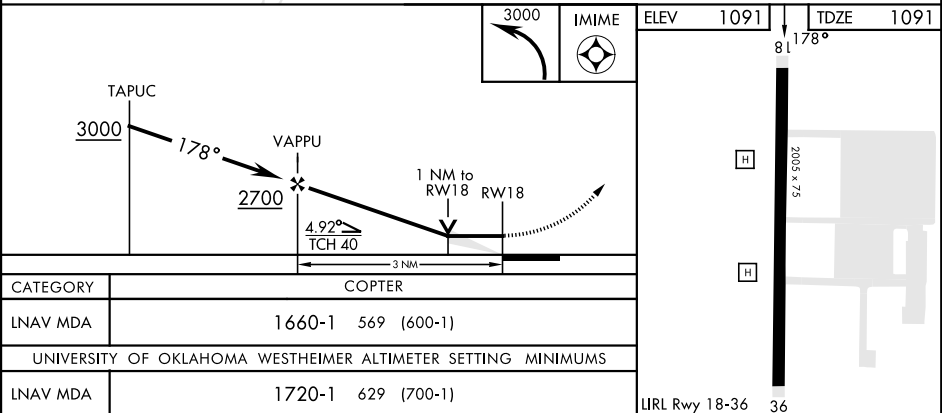
MULDROW OPS (Advisory service only)  
**46.9 139.425 227.2** (CTAF)

Limit all segments airspeed to 90 KIAS.



SC-1, 11 JUN 2026 to 09 JUL 2026

SC-1, 11 JUN 2026 to 09 JUL 2026



# COPTER RNAV (GPS) RWY 18