

# COPTER RNAV (GPS) RWY 36

APCH CRS	Rwy Idg	2005
358°	TDZE	1091
	Arpt Elev	1091

[USA]

MULDROW AHP (KHMY)

RNP APCH - GFS

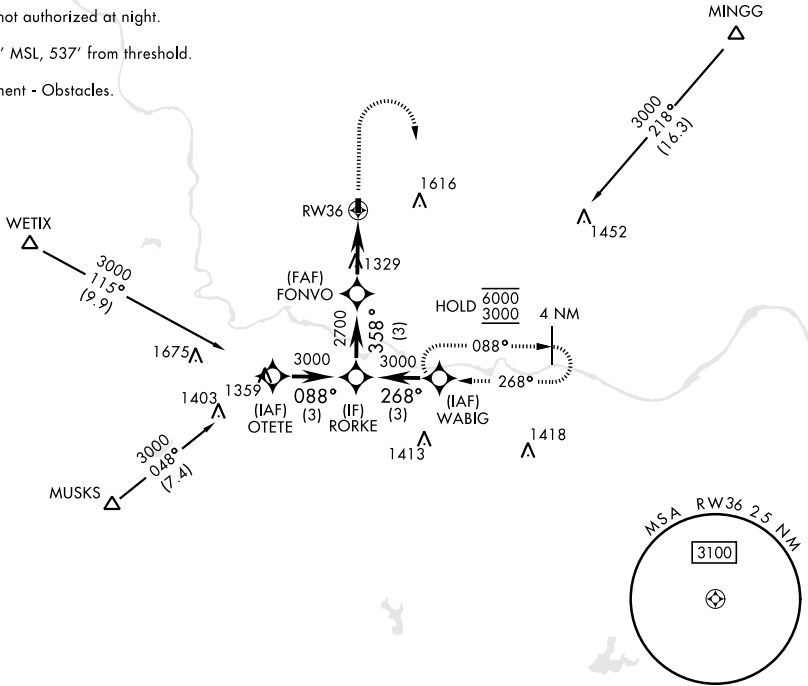
▼ Obtain local altimeter setting on CTAF; when not received, use University of Oklahoma Westheimer altimeter setting minimums.  
 ▲ NA

MISSED APPROACH: Climb to 1600, then climbing right turn to 3000 direct WABIG and hold.

OKE CITY APP CON  
**124.2 336.4**

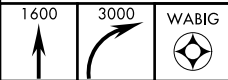
MULDROW OPS (Advisory service only)  
**46.9 139.425 227.2 (CTAF)**

Limit all segments airspeed to 90 KIAS.  
 Procedure not authorized at night.  
 Trees 1141' MSL, 537' from threshold.  
 Visual segment - Obstacles.

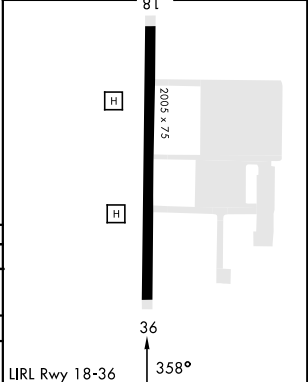
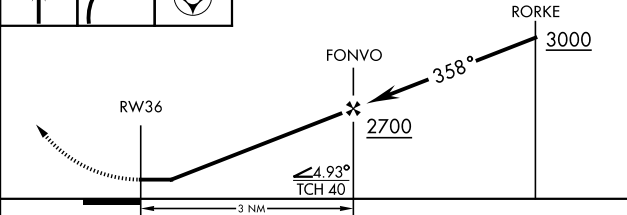


SC-1, 11 JUN 2026 to 09 JUL 2026

SC-1, 11 JUN 2026 to 09 JUL 2026



ELEV	1091	81	TDZE	1091
------	------	----	------	------



CATEGORY	COPTER		
RNAV MDA	1580-1	489	(500-1)
UNIVERSITY OF OKLAHOMA WESTHEIMER ALTIMETER SETTING MINIMUMS			
RNAV MDA	1640-1	549	(600-1)

LURL Rwy 18-36 358°

# COPTER RNAV (GPS) RWY 36