

NORTH, SOUTH CAROLINA

RNAV (GPS) RWY 6

APCH CRS 061°	Rwy Idg 9003
	TDZE 281
	Arprt Elev 321

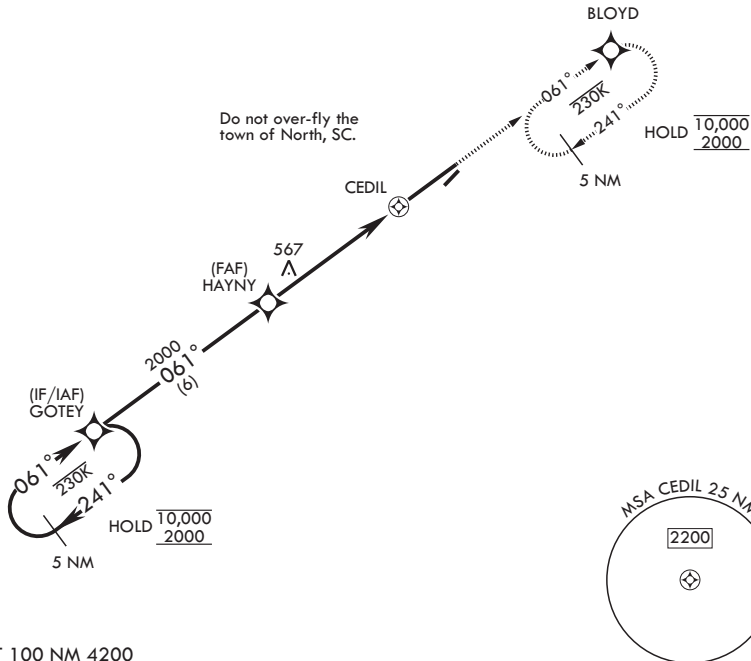
(USAF)

NORTH AF AUX (KXNO)

RNP APCH.	MISSED APPROACH: Climb to 2000 direct BLOYD and hold.
-----------	---

ASOS 118.525	COLUMBIA APP CON/DEP CON 124.15 338.2	LZ/DZ OPS FAC 120.475 235.775
------------------------	---	---

CAUTION: Uncontrolled airspace below 700 ft AGL.



EMERG SAFE ALT 100 NM 4200

<p>5 NM Holding Pattern</p>		<p>2000 BLOYD</p>	<p>ELEV 321</p>	<p>See Supp for declared dist.</p>	<p>TDZE 281</p>
<p>Diagram showing the descent from GOTEY to CEDIL. A 1 NM segment to CEDIL is shown with a 3.16% descent gradient and a 50 ft touchdown height (TCH 50). The distance from GOTEY to CEDIL is 4.5 NM.</p>					
CATEGORY	A	B	C	D	E
LNAV MDA	880-1	599 (600-1)	880-1 ³ / ₄	599	(600-1 ³ / ₄)
CIRCLING*	940-1	619 (700-1)	940-1 ³ / ₄	619	1400-3 1079 (1100-3)
			(700-1 ³ / ₄)		

NORTH, SOUTH CAROLINA
Amdt 3 29DEC22

33°37'N - 81°05'W

NORTH AF AUX (KXNO)

RNAV (GPS) RWY 6

SE-2, 11 JUN 2026 to 09 JUL 2026

SE-2, 11 JUN 2026 to 09 JUL 2026