

LOC/DME I-TMN 110.1 Chan 38	APP CRS 100°	Rwy Ldg 6892 TDZE 24 Apt Elev 24
-------------------------------------------------	------------------------	-------------------------------------------------------------

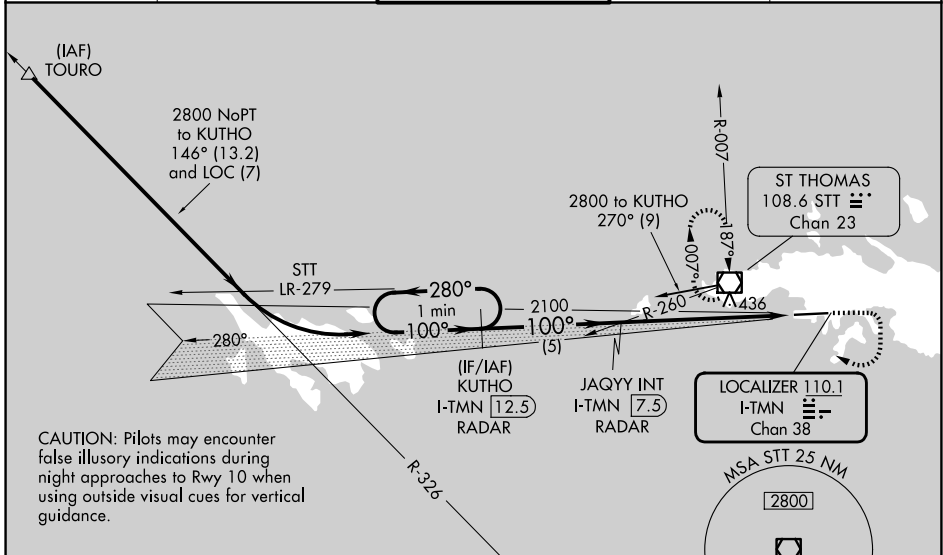
ILS or LOC RWY 10

CYRIL E KING (STT)(TIST)

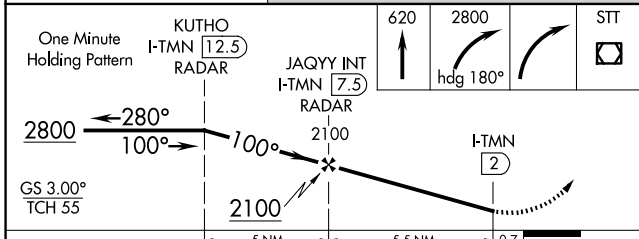
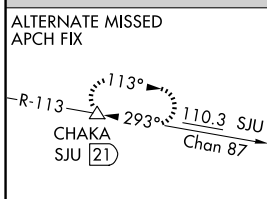
⚠ Circling NA at night.
⚠ Procedure NA when control tower closed.
 Circling NA north of Rwy 10-28.

MISSED APPROACH: Climb to 620 then climbing right turn to 2800 on heading 180° then right turn direct St Thomas VOR/DME and hold.

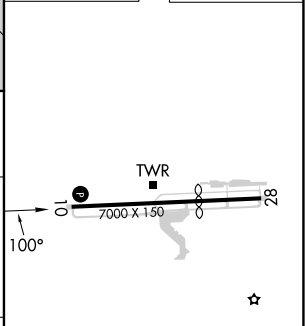
ATIS 124.0	SAN JUAN CENTER 128.65 279.6	ST. THOMAS TOWER ★ 118.8 (CTAF) 0 257.6 118.1 (NORTH OF ISLAND)	GND CON 121.9	UNICOM 122.95
----------------------	----------------------------------------	--------------------------------------------------------------------------------------------	-------------------------	-------------------------



CAUTION: Pilots may encounter false illusory indications during night approaches to Rwy 10 when using outside visual cues for vertical guidance.



ELEV 24	D TDZE 24
---------	------------------



CATEGORY	A	B	C	D
S-ILS 10	415-1 3/8 391 (400-1 3/8)			
S-LOC 10	620-1	596 (600-1)	620-1 3/4	596 (600-1 3/4)
CIRCLING	660-1 636 (700-1)	700-1 676 (700-1)	860-2 1/2 836 (900-2 1/2)	1480-3 1456 (1500-3)

REIL Rwy 10 **0**
 HIRL Rwy 10-28 **0**

FAF to MAP 5.5 NM

Knots	60	90	120	150	180
Min:Sec	5:30	3:40	2:45	2:12	1:50

SE-3, 11 JUN 2026 to 09 JUL 2026

SE-3, 11 JUN 2026 to 09 JUL 2026