

VOR/DME STT	APP CRS	Rwy Ldg TDZE	N/A
108.6	181°		N/A
Chan 23		Apt Elev	24

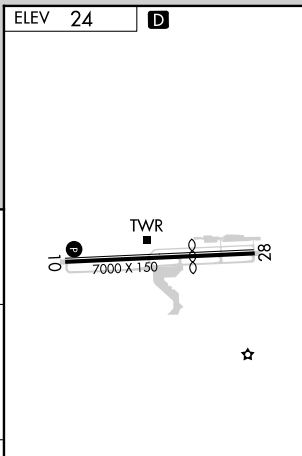
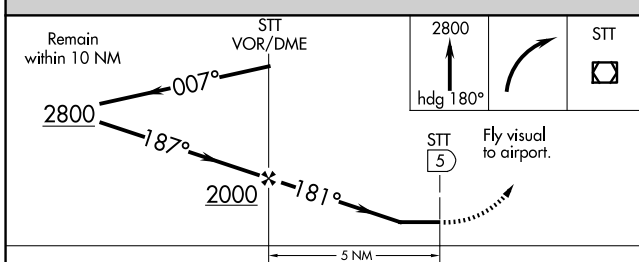
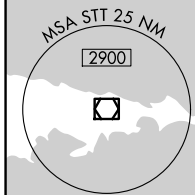
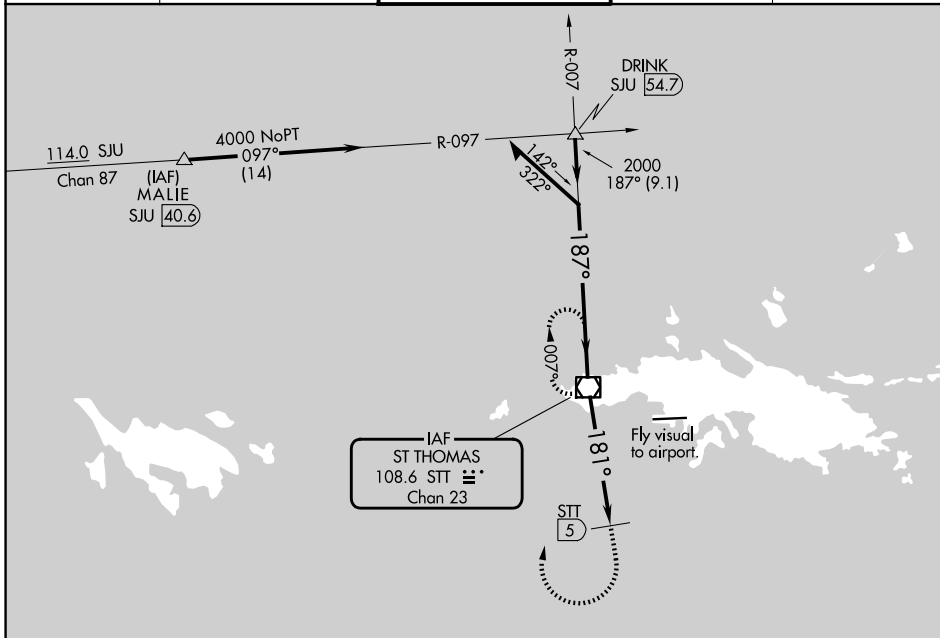
VOR-A

CYRIL E KING (STT)(TIST)

CAUTION: High terrain north of Rwy 10-28 extended. Circling NA north of Rwy 10-28. Procedure NA when control tower not in operation. Procedure NA at night.

MISSED APPROACH: If unable to proceed visually to airport upon descent to 1160, climb to 2800 via heading 180°, then right turn direct STT VOR/DME and hold.

ATIS 124.0	SAN JUAN CENTER 128.65 279.6	ST. THOMAS TOWER ★ 118.8 (CTAF) 257.6 118.1 (NORTH OF ISLAND)	GND CON 121.9	UNICOM 122.95
----------------------	--	---	-------------------------	-------------------------



CATEGORY	A	B	C	D
CIRCLING	1160-3	1136 (1200-3)		1480-3 1456 (1500-3)

SE-3, 11 JUN 2026 to 09 JUL 2026

SE-3, 11 JUN 2026 to 09 JUL 2026