

WAAS CH <b>61340</b> <b>W36A</b>	APP CRS <b>002°</b>	Rwy Idg TDZE <b>187</b> Apt Elev <b>188</b>	<b>4503</b>
--	------------------------	---	-------------

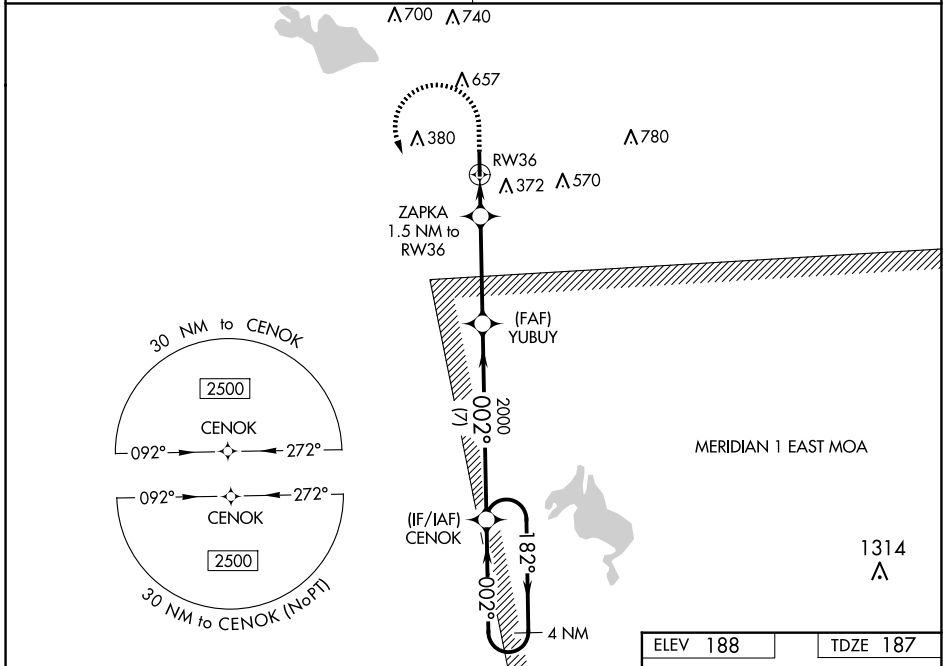
# RNAV (GPS) RWY 36

COLUMBUS-LOWNDES COUNTY (UBS)

RNP APCH.  
 ▼ Rwy 36 helicopter visibility reduction below 3/4 SM NA. Use Columbus AFB altimeter setting; when not received, use Golden Triangle Rgnl altimeter setting and increase all DA 5 feet and all MDA 20 feet, increase LPV and LNAV/VNAV all Cats visibilities to 1 1/2 SM. Baro-VNAV NA.  
 ▲ NA

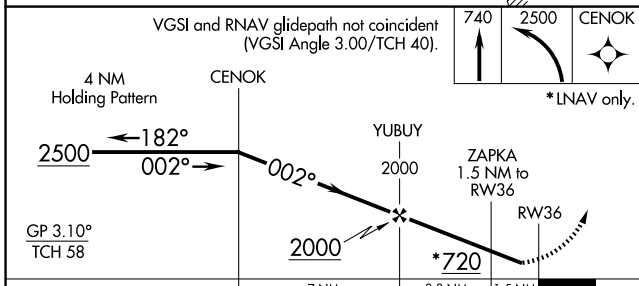
MISSED APPROACH: Climb to 740 then climbing left turn to 2500 direct CENOK and hold.

COLUMBUS APP CON * <b>135.6 323.275</b>	UNICOM <b>122.8 (CTAF) 0</b>
--	---------------------------------

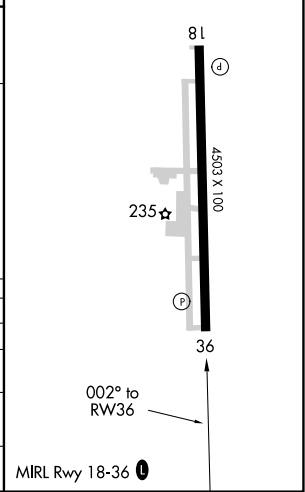


SC-4, 11 JUN 2026 to 09 JUL 2026

SC-4, 11 JUN 2026 to 09 JUL 2026



ELEV <b>188</b>	TDZE <b>187</b>
-----------------	-----------------



CATEGORY	A	B	C	D
LPV DA		527-1	340 (400-1)	
LNAV/VNAV DA		526-1	339 (400-1)	
LNAV MDA	600-1 413 (500-1)		600-1 1/8 413 (500-1 1/8)	
CIRCLING	760-1 572 (600-1)	780-1 592 (600-1)	1040-2 1/2 852 (900-2 1/2)	1040-2 3/4 852 (900-2 3/4)