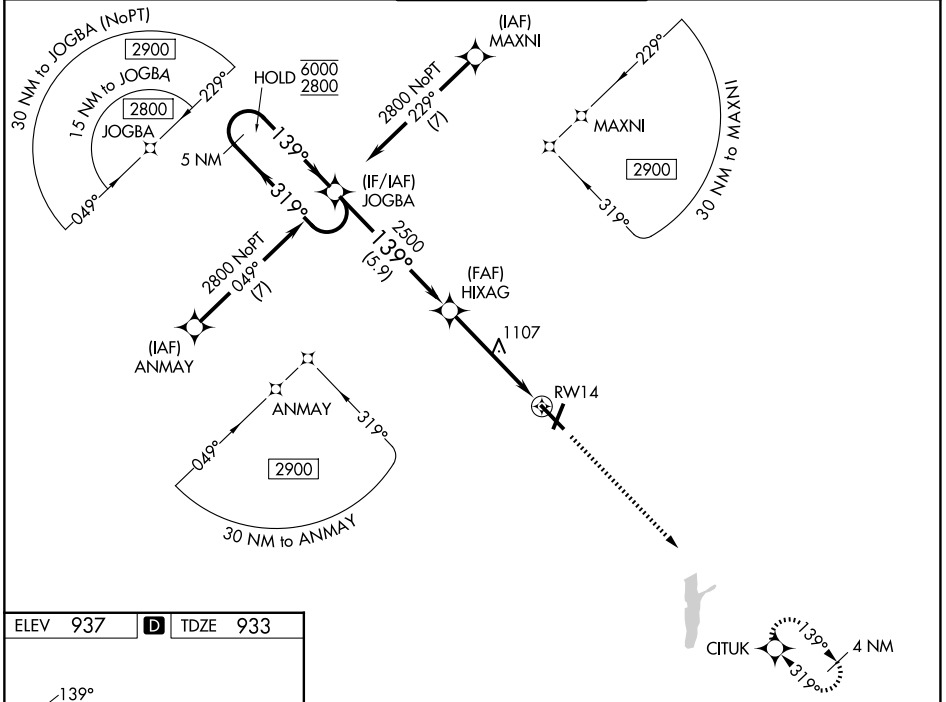


WAAS CH 56401 W14A	APP CRS 139°	Rwy Ldg TDZE Apt Elev	6500 933 937
--	------------------------	-----------------------------	---

RNAV (GPS) RWY 14

DELAWARE COUNTY RGNL (MIE)

RNP APCH - GPS.		<p>⚠ For uncompensated Baro-VNAV systems, LNAV/VNAV NA below -17°C or above 54°C. Baro-VNAV and VDP NA when using FWA altimeter setting. When local altimeter not received, use FWA altimeter setting and increase LPV DA to 1254 feet and all visibilities ¼ SM. Increase LNAV/VNAV DA to 1339 feet and all visibilities ¼ SM. Increase all MDAs 140 feet and LNAV visibility Cat C/D ¾ SM, and Circling visibility Cat C/D ½ SM.</p>		<p>MISSED APPROACH: Climb to 2900 direct CITUK and hold.</p>	
ATIS 133.25	INDIANAPOLIS APP CON 120.65 317.8	MUNCIE TOWER ★ 120.1 (CTAF) 0	GND CON 121.9	UNICOM 122.95	



ELEV 937	D	TDZE 933
----------	----------	----------

HIRL Rwy 14-32 **Ⓛ**
MIRL Rwy 3-21 **Ⓛ**
REL Rwy 3, 14 and 21 **Ⓛ**

5 NM Holding Pattern		2900		CITUK
<p>6000 ← 319°</p> <p>2800 ← 139° →</p>		<p>HIXAG 2500</p> <p>1.2 NM to RWY 14</p>		<p>RWY 14</p>
GP 3.00°		5.9 NM		3.6 NM
TCH 50		1.2		
CATEGORY	A	B	C	D
LPV DA		1133-¾	200 (200-¾)	
LNAV/VNAV DA		1218-7/8	285 (300-7/8)	
LNAV MDA	1360-1	427 (500-1)	1360-1¼	427 (500-1¼)
CIRCLING	1400-1	463 (500-1)	1500-1½	1560-2
			563 (600-1½)	623 (700-2)

EC-2, 11 JUN 2026 to 09 JUL 2026

EC-2, 11 JUN 2026 to 09 JUL 2026