

WAAS CH <b>53537</b> <b>W21A</b>	APP CRS <b>205°</b>	Rwy Ldg TDZE Apt Elev	<b>5197</b> <b>935</b> <b>937</b>
--	------------------------	-----------------------------	---

# RNAV (GPS) RWY 21

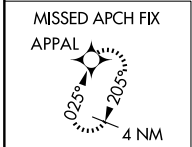
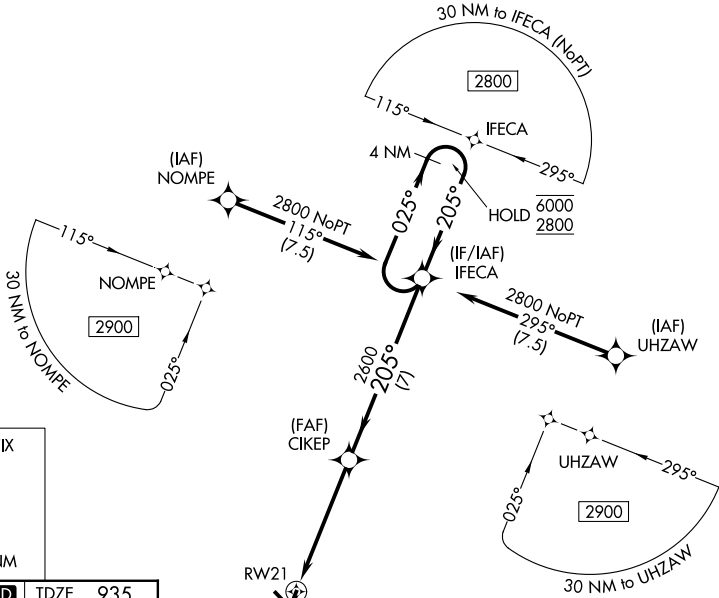
DELAWARE COUNTY RGNL (MIE)

RNP APCH - GPS.

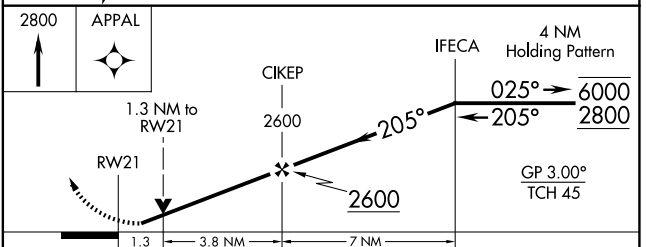
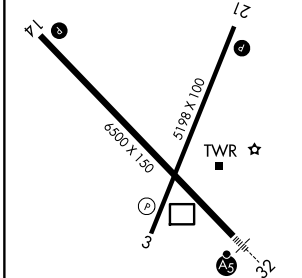
**⚠** For uncompensated Baro-VNAV systems, LNAV/VNAV NA below -17°C or above 54°C. Rwy 21 helicopter visibility reduction below 3/4 SM NA. Baro-VNAV and VDP NA when using FWA altimeter setting. When local altimeter setting not received, use FWA altimeter setting and increase LPV DA to 1316 feet and all visibilities 3/8 SM. Increase LNAV/VNAV DA to 1472 feet and all visibilities 3/8 SM. Increase all MDAs 140 feet and LNAV visibility Cat C/D 3/8 SM, and Circling visibility Cat C/D 1/2 SM.

**MISSED APPROACH:**  
Climb to 2800 direct APPAL and hold.

ATIS <b>133.25</b>	INDIANAPOLIS APP CON <b>120.65 317.8</b>	MUNCIE TOWER ★ <b>120.1</b> (CTAF) <b>0</b>	GND CON <b>121.9</b>	UNICOM <b>122.95</b>
-----------------------	---	--	-------------------------	-------------------------



ELEV 937	<b>D</b>	TDZE 935
----------	----------	----------



CATEGORY	A	B	C	D
LPV DA		1195-3/4	260 (300-3/4)	
LNAV/VNAV DA		1351-1 1/8	416 (500-1 1/8)	
LNAV MDA	1400-1	465 (500-1)	1400-1 3/8 465 (500-1 3/8)	
CIRCLING	1460-1	523 (600-1)	1500-1 1/2 563 (600-1 1/2)	1600-2 663 (700-2)

HIRL Rwy 14-32 **Ⓛ**  
MIRL Rwy 3-21 **Ⓛ**  
REIL Rwy 3, 14 and 21 **Ⓛ**

EC-2, 11 JUN 2026 to 09 JUL 2026

EC-2, 11 JUN 2026 to 09 JUL 2026