

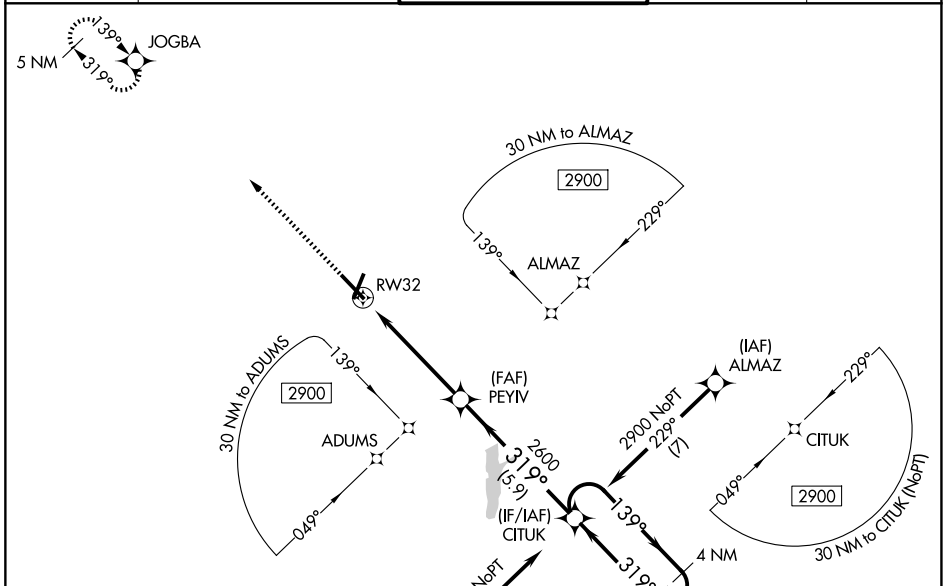
WAAS CH 72601 W32A	APP CRS 319°	Rwy Ldg TDZE Apt Elev	6500 937 937
--	------------------------	-----------------------------	---

RNAV (GPS) RWY 32

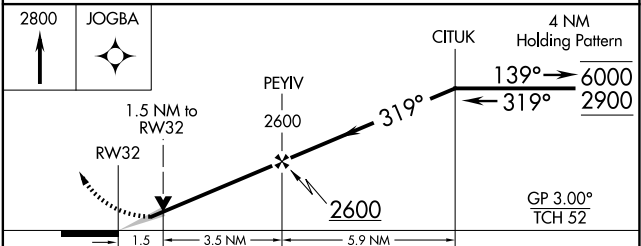
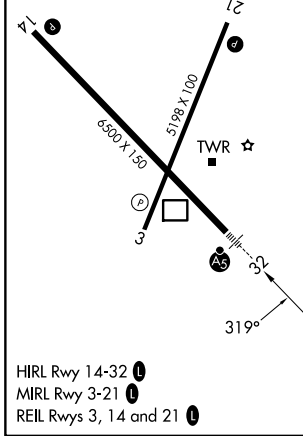
DELAWARE COUNTY RGNL (MIE)

RNP APCH - GPS.	MALSR	MISSED APPROACH: Climb to 2800 direct JOGBA and hold.
<p>▼ For uncompensated Baro-VNAV systems, LNAV/VNAV NA below -16°C or above 54°C.</p> <p>▲ For inop ALS, increase all LPV Cats visibility to 1¼ SM, LNAV/VNAV to 1½ SM.</p>		

ATIS 133.25	INDIANAPOLIS APP CON 120.65 317.8	MUNCIE TOWER ★ 120.1 (CTAF) 0	GND CON 121.9	UNICOM 122.95
-----------------------	---	---	-------------------------	-------------------------



ELEV 937	D TDZE 937
----------	-------------------



CATEGORY	A	B	C	D
LPV DA	1241-1/2 304 (400-1/2)			
LNAV/VNAV DA	1396-7/8 459 (500-7/8)			
LNAV MDA	1480-1/2 543 (600-1/2)		1480-1 543 (600-1)	
CIRCLING	1480-1 543 (600-1)		1500-1 563 (600-1 1/2)	1560-2 623 (700-2)

EC-2, 11 JUN 2026 to 09 JUL 2026

EC-2, 11 JUN 2026 to 09 JUL 2026