

TACAN Y RWY 12

TACAN MIB Chan 96	APCH CRS 125°	Rwy Idg 13,198 TDZE 1666 Arprt Elev 1666	[USAF]	MINOT AFB (KMIB)
-----------------------------	-------------------------	---	--------	------------------

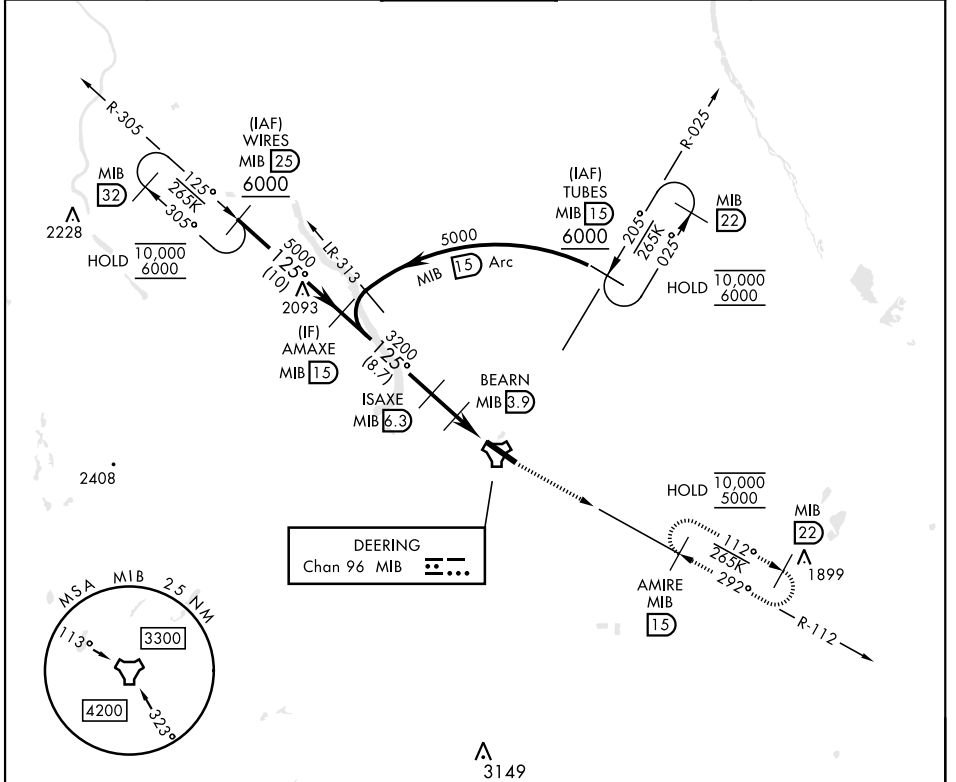
* When ALS inop, increase CAT AB RVR to 55, vis to 1 mile;
CAT CDE vis to 1½ miles.

** Circling not authorized N of Rwy 12-30.

ALSF-1 

MISSED APPROACH: Climb to 5000 via MIB TACAN R-112 direct AMIRE and hold.

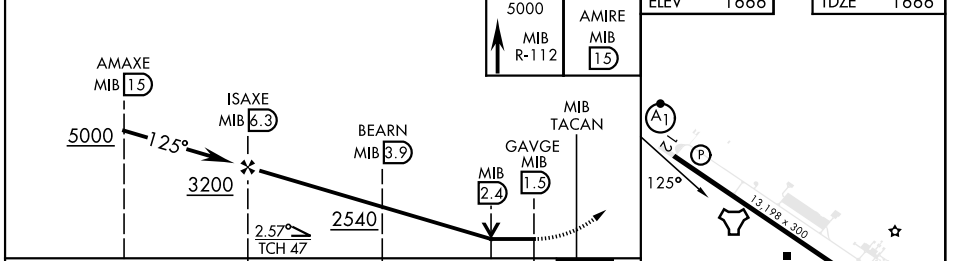
ATIS ★ 278.8	MINOT APP CON 119.6 363.8	MINOT TOWER ★ 120.65 253.5	GND CON 134.0 275.8	CLNC DEL 326.2
------------------------	-------------------------------------	--------------------------------------	-------------------------------	--------------------------



NC-1, 11 JUN 2026 to 09 JUL 2026

NC-1, 11 JUN 2026 to 09 JUL 2026

EMERG SAFE ALT 100 NM 4700



CATEGORY	A	B	C	D	E
S-12*	2120/24	454 (500-½)	2120/45	454	(500-¾)
CIRCLING**	2120-1 454 (500-1)	2140-1 474 (500-1)	2180-1½ 514 (600-1½)	2320-2 654 (700-2)	2320-2¼ 654 (700-2¼)

HIRL Rwy 12-30

MINOT, NORTH DAKOTA 48°25'N-101°21'W MINOT AFB (KMIB)

Amdt 1 16MAY24

TACAN Y RWY 12